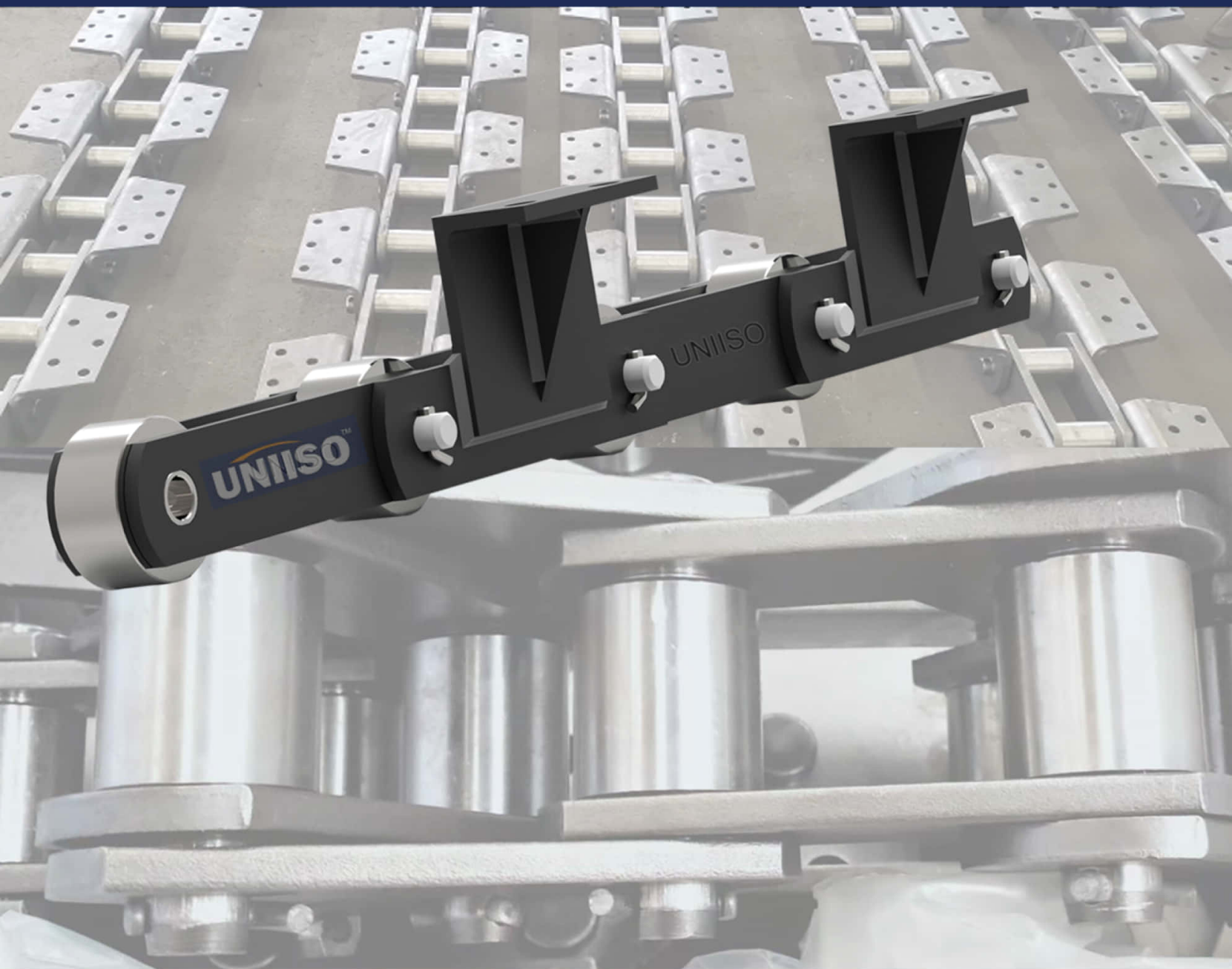


UNIISOTM
POWER TO THE WORLD



CEMENT CHAIN

www.uniisoindustries.com

UNIISO Industries Co.,Ltd. was founded in 1987, has accumulated over 30 years' chain design, manufacture technology and experience in forging chain, casting chain,punching chain. the company covers an area of 50000 square meters.

Our main products including: sugar mill chain,palm oil chain, cement chain,sewage processing chain,asphalt mixing chain,paver chain,pintle chain,agricultural chain,forging chain, casting chain, enginnering chain. welded chain, all chains standard we are conform to ISO.ANSI,DIN,BS&JIS. UNIISO adopt the most advanced technology from Japan and Germany basis on own innovation to producing safe,reliable and excellence performance.

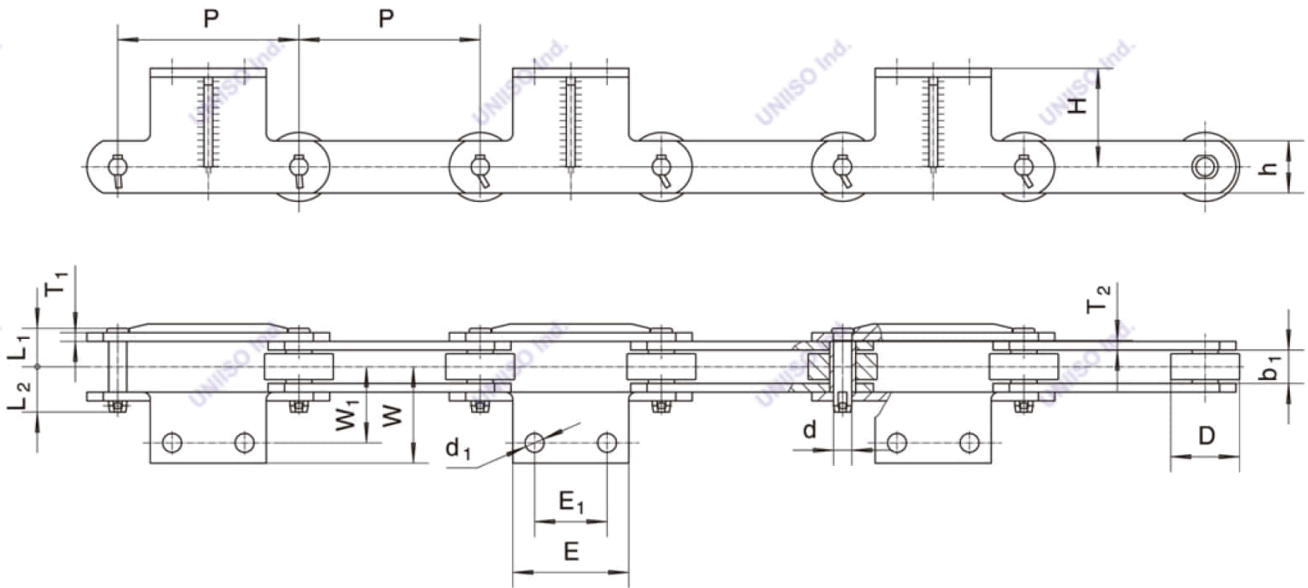
Choosing UNIISO, we will extend the lifespan in your production line and devices.

if you wanna know more about us, pls visit our website:

www.uniisoindustries.com



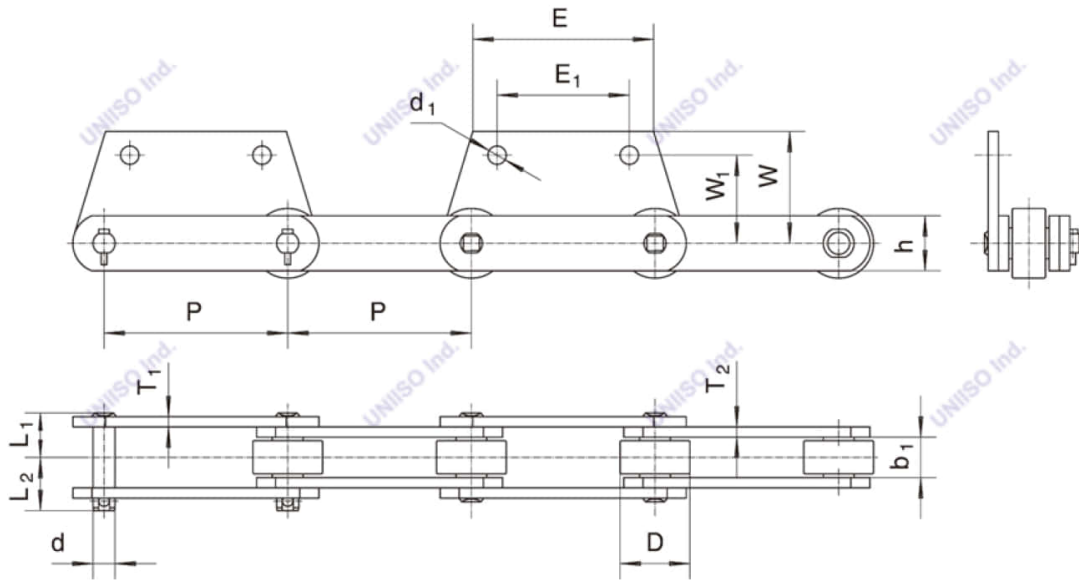
Reclaimer Chains



链号	节距	内节内宽	滚子 外径	销轴			链板		最小抗拉 强度	每米 重量
Chain No.	Pitch	Width between inner Sidebars	Roller Diameter	Pin			Sidebar		Ultimate Tensile Strength	Weight per Meter
	P	$b_1(\text{min})$	$D(\text{max})$	d	L_1	L_2	h	T_1/T_2	$F_u(\text{min})$	q
	mm	mm	mm	mm	mm	mm	mm	mm	kN	kg/m
SPN250A-A2	250	46	95	25	54.2	61.3	72	12	670	36.2
SPN250B-A2	250	42	80	24	52	60	60	12	520	26.8
SPN250C-A2	250	55.8	120	34	65	77.3	90	14	725	55.6
SPN250D-A2	250	50	90	30	59.35	67.95	75	14	750	37
SPN250F-A2	250	50	90	28	62.35	67.85	75	14	750	38
SPN315A-A2	315	50	120	36	58.7	67.8	80	12	610	42.8

链号	E1	E	W1	W	d_1	H
Chain No.	mm	mm	mm	mm	mm	mm
SPN250A-A2	100	160	106	134.1	26	136
SPN250B-A2	100	152	83	112	21	150
SPN250C-A2	120	180	88.5	118.5	22	120
SPN250D-A2	100	150	98.5	127.5	26	131.5
SPN250F-A2	100	170	100	147	26	130
SPN315A-A2	130	190	89.5	125.5	21	140

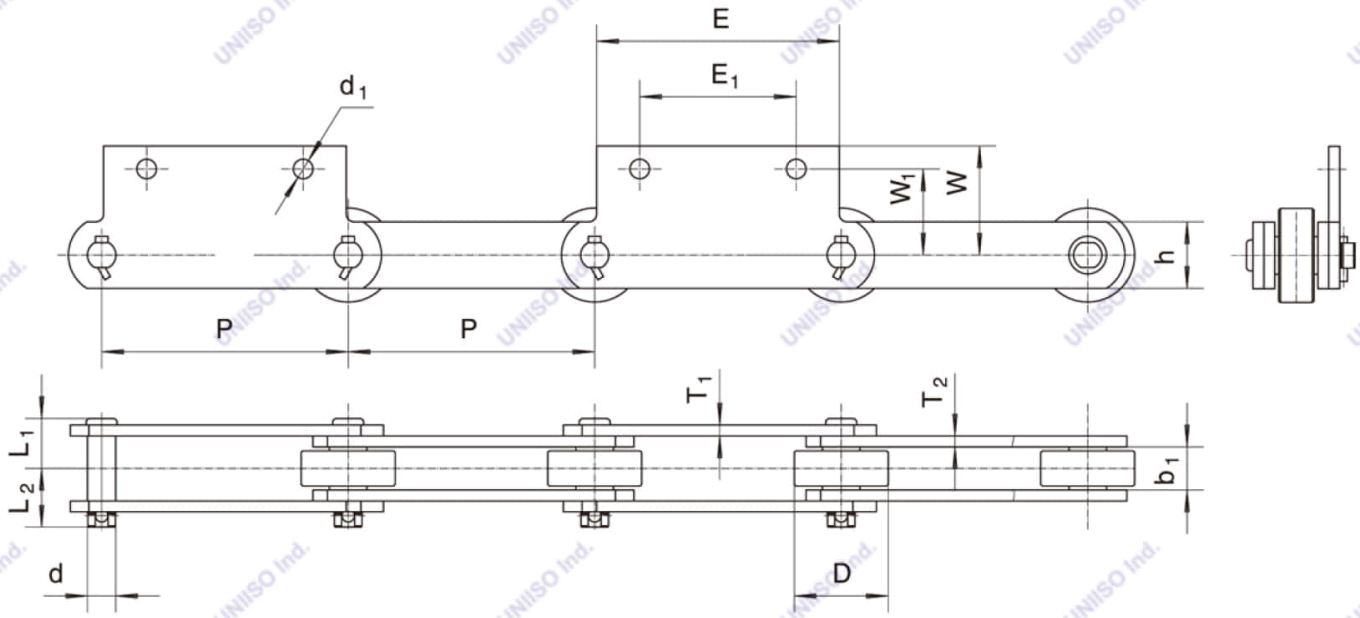
Reclaimer Chains



链号	节距	内节内宽	滚子外径	销轴			链板		最小抗拉强度	每米重量
Chain No.	Pitch	Width between inner Sidebars	Roller Diameter	Pin			Sidebar		Ultimate Tensile Strength	Weight per Meter
	P	b ₁ (min)	D(max)	d	L	L	h	T ₁ /T ₂	Fu(min)	q
	mm	mm	mm	mm	mm	mm	mm	mm	kN	kg/m
SPN250-SH2	250	55	95	30	62	70	75	14	750	40
SPN250A-SH2	250	55	95	28	64.85	70.35	75	14	750	39.5
SPN315B-SH2	315	55	120	36	65	74	100	14	900	49.7
SPN315C-SH2	315	55	120	36	64.9	66.7	100	14	900	49.4
SPN315D-SH2	315	50	120	36	54.6	63.4	100	10	640	41.6
SPN315E-SH2	315	55	120	39	64.6	74.4	100	14	900	50.2
SPN315F-SH2	315	55	120	36	56.6	66.4	100	10	640	40.3
SPN315G-SH2	315	55	120	36	65	74	90	14	900	46.8
SPN315J-SH2	315	64	120	30	65.75	74.25	85	12/14	900	45.2
SPN315K-SH2	315	62.5	120	40	68.4	83.6	100	14	900	52.6
SPN315L-SH2	315	62.5	120	40	68.4	78.1	100	14	1078	52.1
SPN400-SH2	400	59.3	140	40	71.75	103.25	120	16	1500	64.5

链号	E ₁	E	W ₁	W	d ₁
Chain No.	mm	mm	mm	mm	mm
SPN250-SH2	180	246	120	152.5	25
SPN250A-SH2	180	253.6	110	140	25
SPN315B-SH2	200	315	110	140	25
SPN315C-SH2	200	315	110	140	25
SPN315D-SH2	200	305	130	160	25
SPN315E-SH2	200	330	110	140	25
SPN315F-SH2	200	305	130	160	25
SPN315G-SH2	200	315	110	140	25
SPN315J-SH2	200	315	130	159.5	25
SPN315K-SH2	200	315	110	150	25
SPN315L-SH2	200	315	110	140	25
SPN400-SH2	300	400	130	175	26

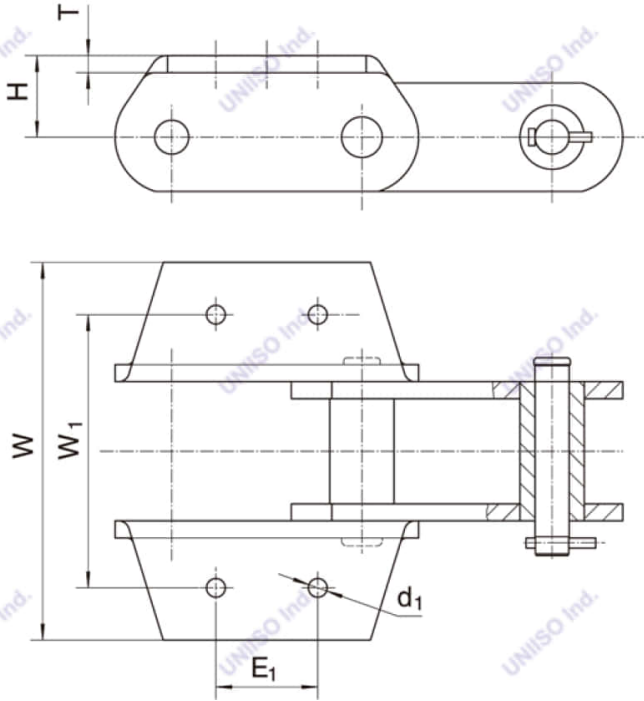
Reclaimer Chains



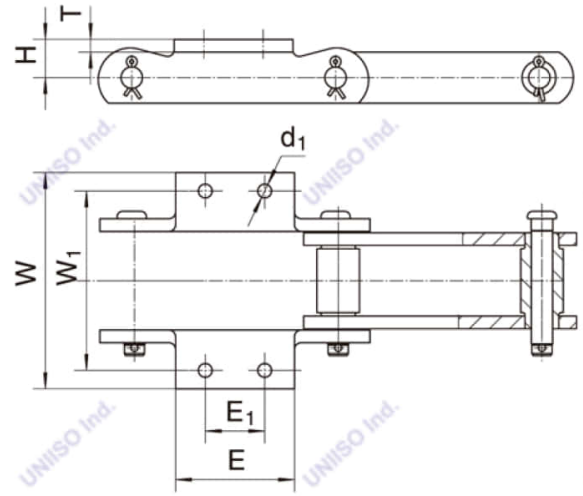
链号	节距	内节内宽	滚子外径	销轴			链板		最小抗拉强度	每米重量
Chain No.	Pitch	Width Between inner Sidebar	Roller diameter	Pin			Sidebar		Ultimate Tensile Strength	Weight per Meter
	P	b ₁ (min)	D(max)	d	L ₁	L ₂	h	T ₁ /T ₂	Fu(min)	q
	mm	mm	mm	mm	mm	mm	mm	mm	kN	kg/m
SPN315-SH2	315	55	120	36	65	74	90	14	900	45.15

链号	E ₁	E	W ₁	W	d ₁
Chain No.	mm	mm	mm	mm	mm
SPN315-SH2	200	315	110	139.5	25

Bucket Elevator Chains & Attachments



K2, K22

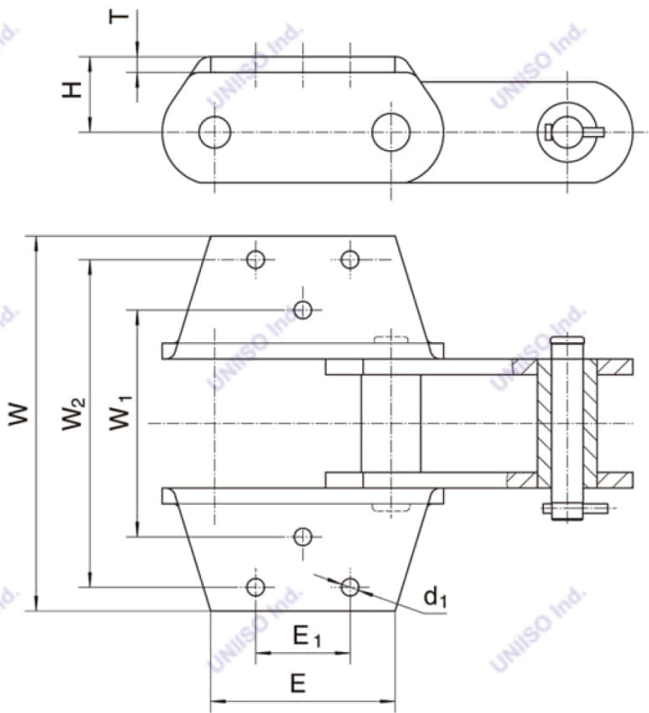


K25

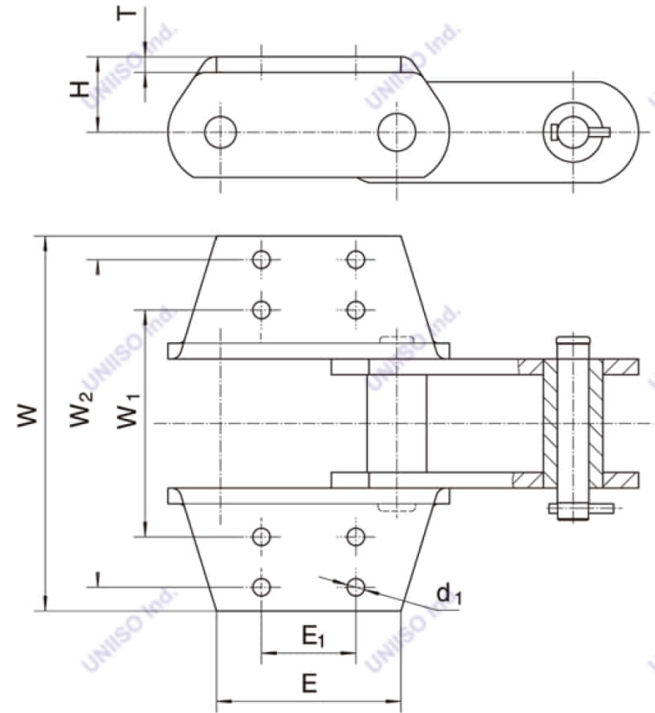
K2、K22 附件								
K2 、K22 Attachment								
链号	E ₁	E	W ₁	W	d ₁	H	T	每米重量
Chain No.	mm	mm	mm	mm	mm	mm	mm	Weight per meter q (kg/m)
ER102B	44.45	108	134.92	174.6	11.1	28.6	9.5	11.9
ER111	58.72	133.5	158.8	191.6	14.27	38.1	9.5	18.63

K25 附件								
K25 Attachment								
链号	E ₁	E	W ₁	W	d ₁	H	T	每米重量
Chain No.	mm	mm	mm	mm	mm	mm	mm	Weight per meter q (kg/m)
ER110	44.45	88.9	134.92	162.5	10.3	28.58	9.5	10.79

Bucket Elevator Chains & Attachments



K35

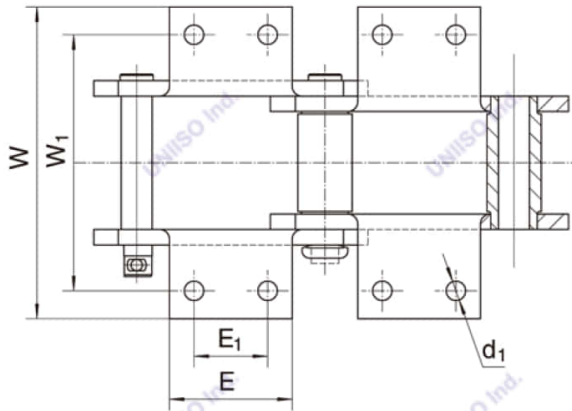
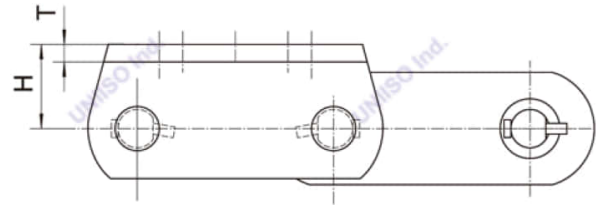
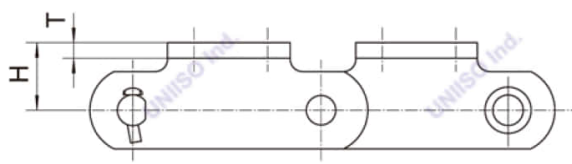


K44

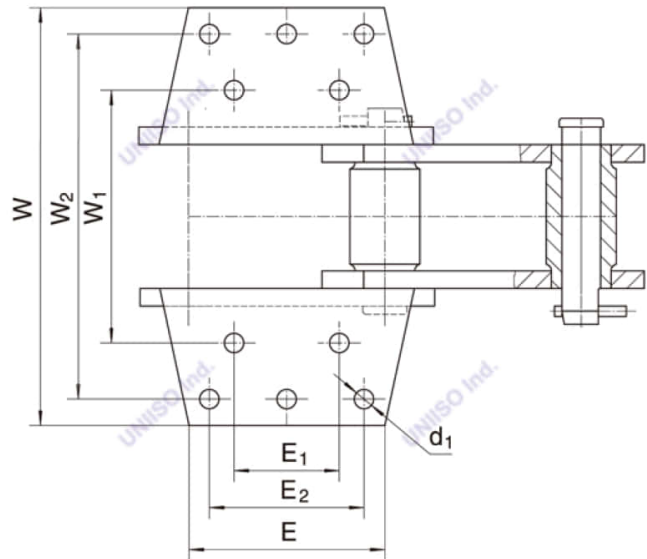
K35 附件									
K35 Attachment									
链号	E ₁	E	W ₁	W ₂	W	d ₁	H	T	每米重量
Chain No.	mm	mm	mm	mm	mm	mm	mm	mm	Weight per meter q (kg/m)
ER856	63.5	148.3	184.2	298.5	344.4	17.5	47.8	12.7	40.06

K44 附件									
K44 Attachment									
链号	E ₁	E	W ₁	W ₂	W	d ₁	H	T	每米重量
Chain No.	mm	mm	mm	mm	mm	mm	mm	mm	Weight per Meter q (kg/m)
ER857	88.9	139.7	177.8	304.8	355.6	14.3	63.5	12.7	56.59
ER859	69.85	150.4	228.6	330.2	381	17.5	76.2	16	87.86
ER958	88.9	146.1	177.8	304.8	347.5	14.3	63.5	12.7	59.56

Bucket Elevator Chains & Attachments



K24

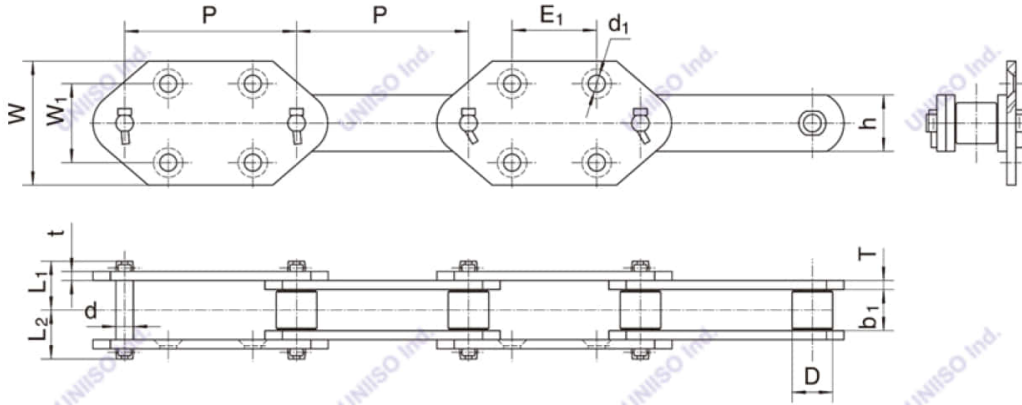


K443

K24 附件								
K24 Attachment								
链号	E ₁	E	W ₁	W	d ₁	H	T	每米重量
Chain No.	mm	mm	mm	mm	mm	mm	mm	Weight per meter q (kg/m)
ER856	63.5	175.5	184.2	238.3	17.5	47.75	12.7	40.95
ER956	63.5	175.5	184.2	241.3	17.5	47.75	12.7	43.18

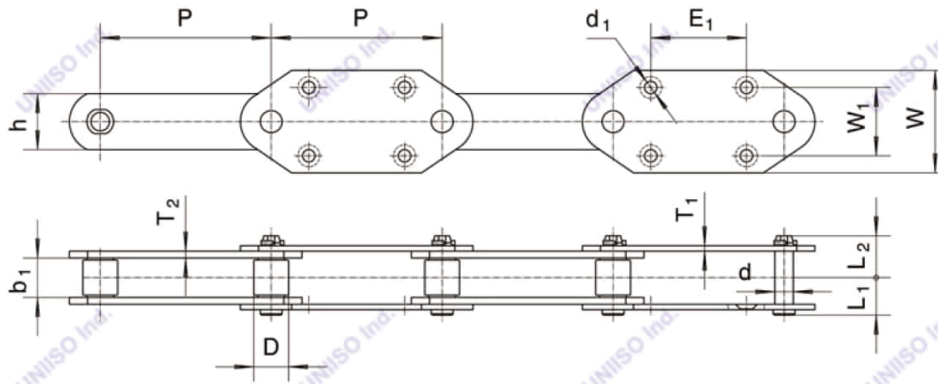
K443 附件										
K443 Attachment										
链号	E ₁	E ₂	E	W ₁	W ₂	W	d ₁	H	T	每米重量
Chain No.	mm	mm	mm	mm	mm	mm	mm	mm	mm	Weight per meter q (kg/m)
ER864	95.25	139.7	177.8	228.6	330.2	381	17.5	76.2	16	81.9
ER984	95.25	139.7	185	228.6	330.2	378	17.5	76.2	15.9	71

Bucket Elevator Chains & Attachments



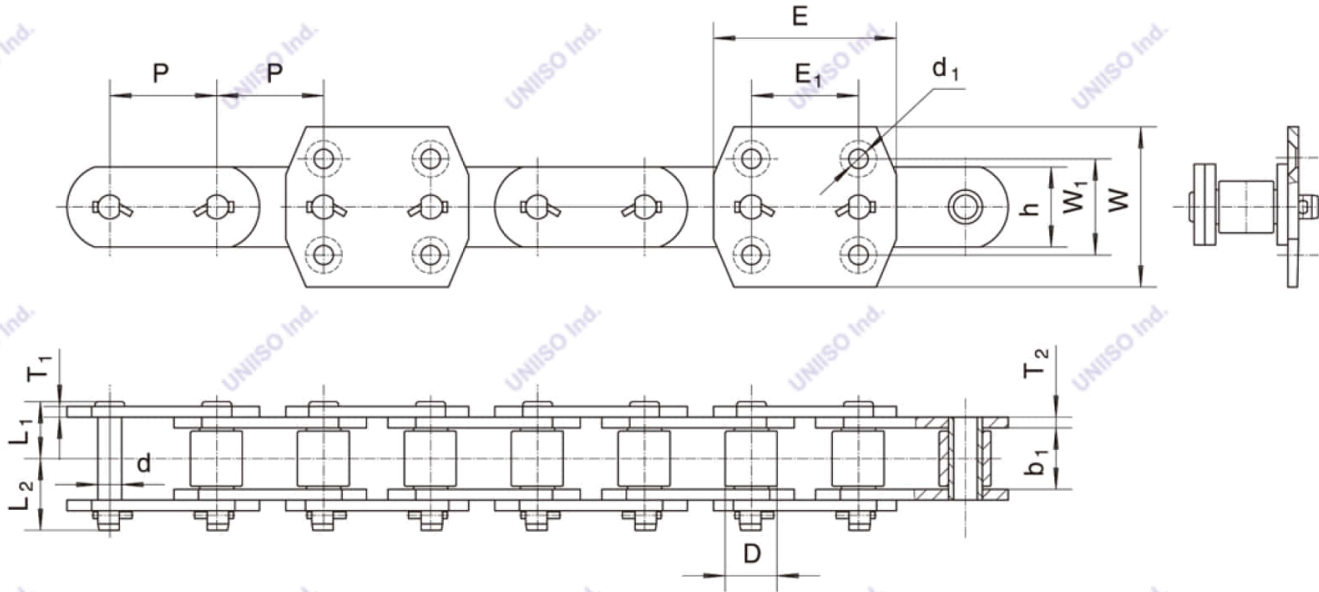
链号	节距	内节内宽	滚子外径	销轴			链板		最小抗拉强度	每米重量
Chain No.	Pitch	Width between inner sidebars	Roller Diameter	Pin			Sidebar		Ultimate Tensile Strength	Weight Per Meter
	P	b ₁ (min)	D(max)	d	L ₁	L ₂	h	T ₁ /T ₂	Fu(min)	q
	mm	mm	mm	mm	mm	mm	mm	mm	kN	kg/m
RS-FE15230-G4	152.4	36.5	36	15.5	45	45	50	8	355.7	12.17

链号	W ₁	W	E ₁	d ₁
Chain No.	mm	mm	mm	mm
RS-FE15230-G4	70	108.5	75	15



链号	节距	内节内宽	滚子外径	销轴			链板		最小抗拉强度	每米重量
Chain No.	Pitch	Width Between Inner sidebars	Roller Diameter	Pin			Sidebar		Ultimate Tensile Strength	Weight Per Meter
	P	b ₁ (min)	D(max)	d	L ₁	L ₂	h	T ₁ /T ₂	Fu(min)	q
	mm	mm	mm	mm	mm	mm	mm	mm	kN	kg/m
NE150	200	57	48.5	22.23	62.25	62.25	75	10	540	21.59
NE150A	200	57	48.5	22.23	60.2	66.8	65	12	315	24.4
NE300	250	76	90	35	89	89	100	16	1000	53.21
0712	250	57.4	50.8	27	56	60	82	8/10	700	20.96

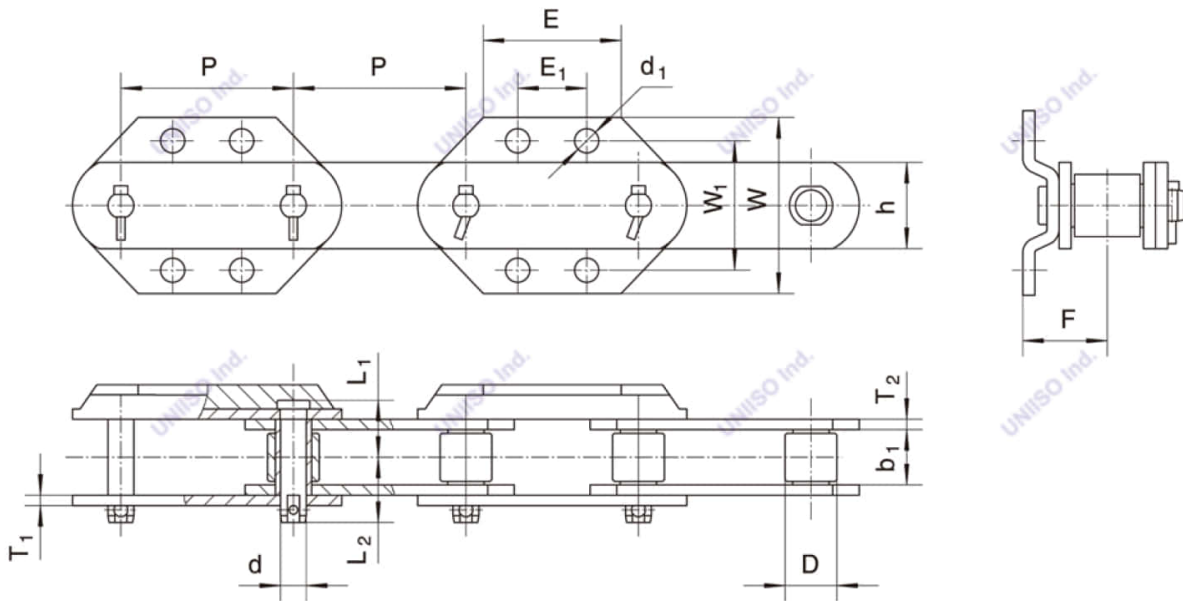
Bucket Elevator Chains & Attachments



链号	节距	内节内宽	滚子外径	销轴			链板		最小抗拉强度	每米重量
Chain No.	Pitch	Width between inner sidebars	Roller Diameter	Pin			Sidebar		Ultimate Tensile Strength	Weight per Meter
	P	b _i (min)	D(max)	d	L ₁	L ₂	h	T ₁ /T ₂	Fu(min)	q
	mm	mm	mm	mm	mm	mm	mm	mm	kN	kg/m
NSE150A	75	36.2	36	16	47.35	47.35	50.8	9.5	270	18.75
NSE100C	76.2	36.5	36	17	40.1	46.9	50	8	270	16
NSE200E	100	51.6	44.5	19.8	53	58	60	10	280	24.1
NSE300	100	57	48.5	22.23	54.4	62.4	75	10	540	30.1
NSE300A	100	57	47.5	22.23	54.4	62.4	75	10	540	30

链号	E ₁	E	W ₁	W	d ₁
Chain No.	mm	mm	mm	mm	mm
NSE150A	75	130	80	122	14
NSE100C	75	130	80	126	14
NSE200E	100	171	105	150	18
NSE300	100	171	90	150	18
NSE300A	100	180	105	150	18

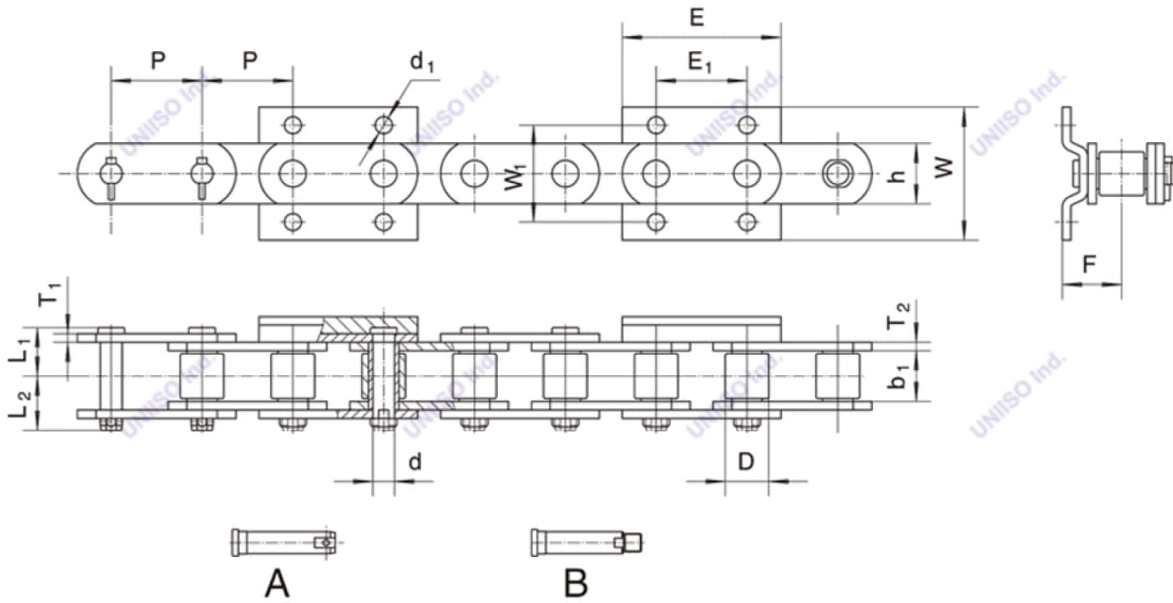
Bucket Elevator Chains & Attachments



链号	节距	内节内宽	滚子 外径	销轴			链板		最小抗拉 强度	每米重量
Chain No.	Pitch	Width between inner sidebars	Roller Diameter	Pin			Sidebar		Ultimate Tensile Strength	Weight per Meter
	P	b _(min)	D(max)	d	L ₁	L ₂	h	T ₁ /T ₂	Fu(min)	q
	mm	mm	mm	mm	mm	mm	mm	mm	kN	kg/m
M112*100TA	100	32	30	15	34	37	40	6	112	5.79
M112*150TA	150	32	30	15	34	37	40	6	112	7.39
M112*150TB	150	30	29	15	32.8	36.3	40	6	200	7.57
M112*150TC	150	30	29	15	34.9	38.1	40	8	226	8.32
M112*150TD	150	35	32	15	36.1	45	46	6.4	226	9.51
SSN150A	150	42.5	38	18	43.3	56.3	56	8	375	14.43
SSN150B	150	42.5	41	18	43.3	56.3	56	8	375	14.85
SSN150C	150	54.5	50	25	54.6	64.4	72	9.8	460	24.43

链号	E ₁	E	W ₁	W	d ₁	F
Chain No.	mm	mm	mm	mm	mm	mm
M112*100TA	40	80	75	102	14	40
M112*150TA	75	100	75	102	14	40
M112*150TB	75	100	80	115	14	39
M112*150TC	75	100	80	115	14	38.5
M112*150TD	75	100	80	115	14	42
SSN150A	85	102	90	126	16	49.6
SSN150B	75	102	90	126	14	47.5
SSN150C	75	116	100	141	18	63.6

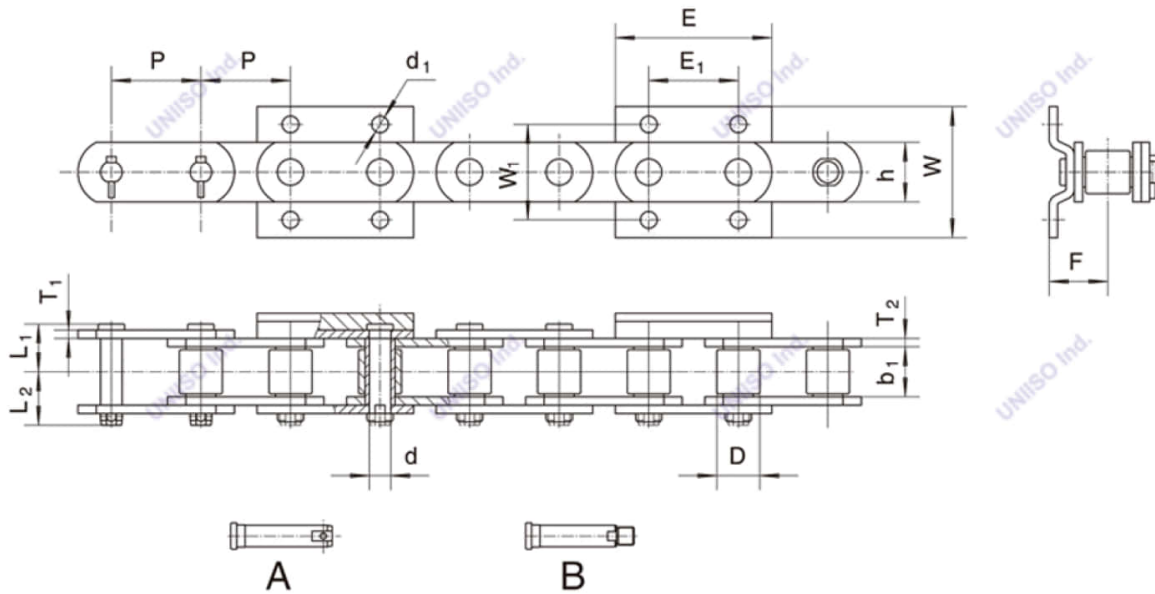
Bucket Elevator Chains & Attachments



链号	节距	内节内宽	滚子外径	销轴			链板		最小抗拉强度	每米重量
Chain No.	Pitch	Width between inner sidebars	Roller Diameter	Pin			Sidebar		Ultimate Tensile	Weight per Meter
	P	b _i (min)	D(max)	d	L ₁	L ₂	h	T ₁ /T ₂	Strength Fu(min)	q
	mm	mm	mm	mm	mm	mm	mm	mm	kN	kg/m
100TD-M	100	47	42	21	46.3	53.7	60	8	224	20
100TD-M	100	43	42	21	44.4	55.4	60	8	224	19.1
SSN100	100	57	50.8	24	55.4	61.6	63.5	9.5	539	27.8
SSN100A	100	51	40.1	19.05	51.5	57.5	50.8	9.5	387	18.8
SSN125	125	57	50.8	24	55.4	61.6	63.5	9.5	539	24.7
SSN125A	125	57	50.8	24	55.4	61.6	63.5	9.5	539	24
SSN125C	125	51	40.1	19.05	51.5	57.5	50.8	9.5	387	17.8
GX50125	125	70	62	33	69.2	79.3	80/90	12.7	980	46.1
GX60150	150	83	72	37	75.8	85.9	100/110	12.7	1274	57.7

链号	E ₁	E	W ₁	W	d ₁	F	连接销轴
Chain No.	mm	mm	mm	mm	mm	mm	Conn. Pin Type
100TD-M	100	168	100	148	18	55	A
100TD-MA	100	168	100	148	14	47	B
SSN100	100	168	100	160	18	62	A
SSN100A	100	154	100	146	16	58	A
SSN125	125	193	110	172	22	62	A
SSN125A	125	193	110	144	18	63.5	A
SSN125C	125	193	110	146	18	58	A
GX50125	125	210	110	172	22	78.5	A
GX60150	150	260	140	184	22	85	A

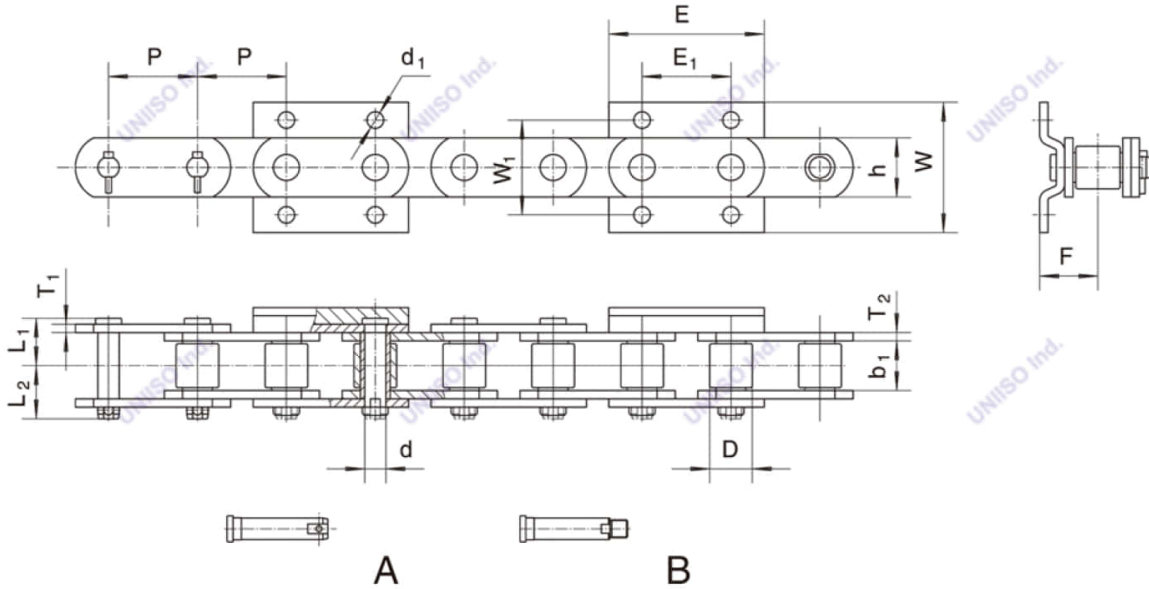
Bucket Elevator Chains & Attachments



链号	节距	内节内宽	滚子外径	销轴			链板		最小抗拉强度	每米重量
Chain No.	Pitch	Width between inner sidebars	Roller Diameter	Pin			Sidebar		Ultimate Tensile Strength	Weight per Meter
	P	b _i (min)	D(max)	d	L ₁	L ₂	h	T ₁ /T ₂	Fu(min)	q
	mm	mm	mm	mm	mm	mm	mm	mm	kN	kg/m
75TA-M	75	41.8	36	18	40.8	45.7	56	7	160	17.37
NSE100	75	43.6	39	20	44.1	51.2	56	8	375	20.27
NSE100A	75	35	32	16	35.6	45.4	50.8	6.4	270	13.1
NSE100B	76.2	37	35	16	40.5	47	45	8	270	15.1
NSE150	75	42.5	38	18	43.3	56.3	56	8	375	19.98
NSE150B	75	42.5	36	18	43.3	56.3	56	8	375	19.48
NSE200	100	50	46	22	51.9	59.6	60	10	450	24.3
NSE200A	100	50	46	22	51.9	60.9	60	10	450	24.3
NSE200B	100	43	41	21	44.4	52.1	60	8	224	19.4
NSE200D	100	50	46	22	52.05	59.45	60	10	450	24.3

链号	E ₁	E	W ₁	W	d ₁	F	连接销轴
Chain No.	mm	mm	mm	mm	mm	mm	Conn Pin Type
75TA-M	75	143	80	110	14	50	A
NSE100	75	132	90	124	14	50	A
NSE100A	75	125	86	115	13.6	40.7	B
NSE100B	75	125	80	115	14	46.5	A
NSE150	75	132	90	124	14	49.6	B
NSE150B	85	132	90	124	14	49.6	B
NSE200	100	148	100	156	18	59	A
NSE200A	100	148	100	156	18	59	B
NSE200B	100	168	100	148	18	47	A
NSE200D	100	157	100	140	18	59	A

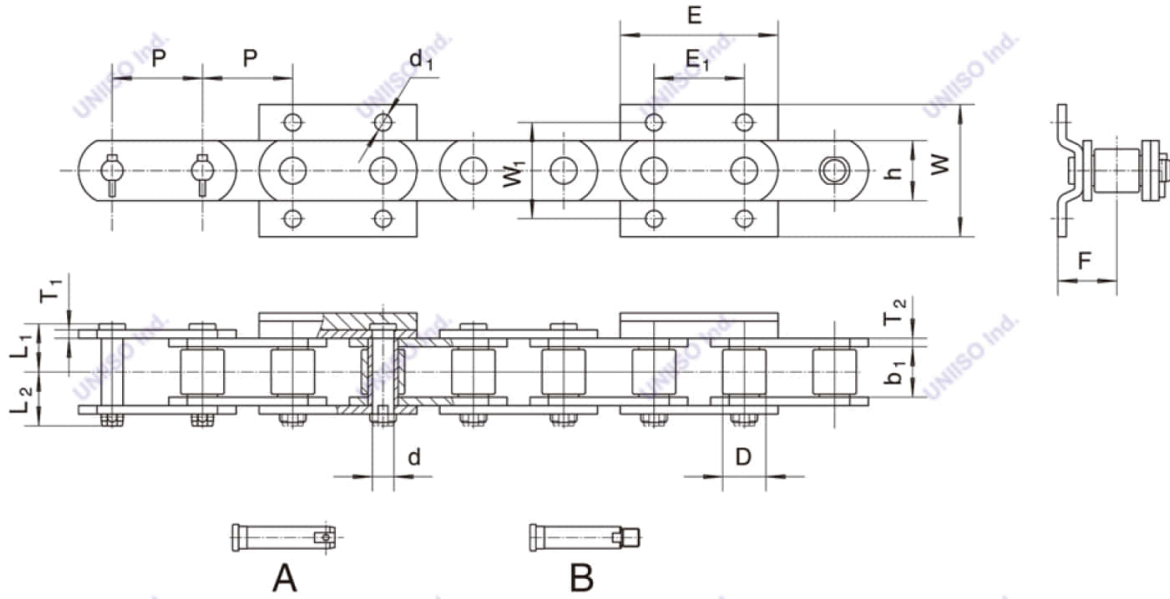
Bucket Elevator Chains & Attachments



链号	节距	内节内宽	滚子外径	销轴			链板		最小抗拉强度	每米重量
Chain No.	Pitch	Width between inner sidebars	Roller Diameter	Pin			Sidebar		Ultimate Tensile Strength	Weight Per Meter
	P	b ₁ (min)	D(max)	d	L ₁	L ₂	h	T ₁ /T ₂	Fu(min)	q
	mm	mm	mm	mm	mm	mm	mm	mm	kN	kg/m
NSE300C	100	60	54	30	61.5	83.5	78	12	790	41.3
NSE300D	100	60	56	30	61.5	83.5	86	12	840	44.39
NSE300F	100	60	56	30	59.5	81.5	78	10/12	790	39.3
NSE400	100	53.7	50	24	53.9	66.6	68	10	630	28.7
NSE400A	100	53.7	50	26	57.9	70.1	68	12	630	34.13
NSE400B	100	60	55	28	61.4	83.6	78	12	790	41.68
NSE400C	100	53.7	48	24	53.9	66.6	68	10	630	28.02
NSE400D	100	56.7	50	26	59.8	67.2	68	12	630	34.9
NSE400E	100	53.7	48	24	53.9	66.6	68	10	630	27.8
NSE400F	100	60	56	28	61.4	83.6	78	12	790	42.1
NSE400G	100	53.7	50	26	57.9	70.1	68	12	630	34.13

链号	E ₁	E	W ₁	W	d ₁	F	连接销轴
Chain No.	mm	mm	mm	mm	mm	mm	Conn. Pin Type
NSE300C	100	180	110	155	18	65.5	B
NSE300D	100	180	120	165	18	65.5	B
NSE300F	100	180	115	155	18	68.1	B
NSE400	100	157	100	137	18	67	B
NSE400A	100	180	115	155	18	67	B
NSE400B	100	180	115	153	18	71.4	B
NSE400C	100	157	100	137	18	67	B
NSE400D	100	180	105	155	18	68.5	A
NSE400E	100	157	100	137	18	60	B
NSE400F	100	180	115	153	18	70	B
NSE400G	100	180	105	155	18	67	B

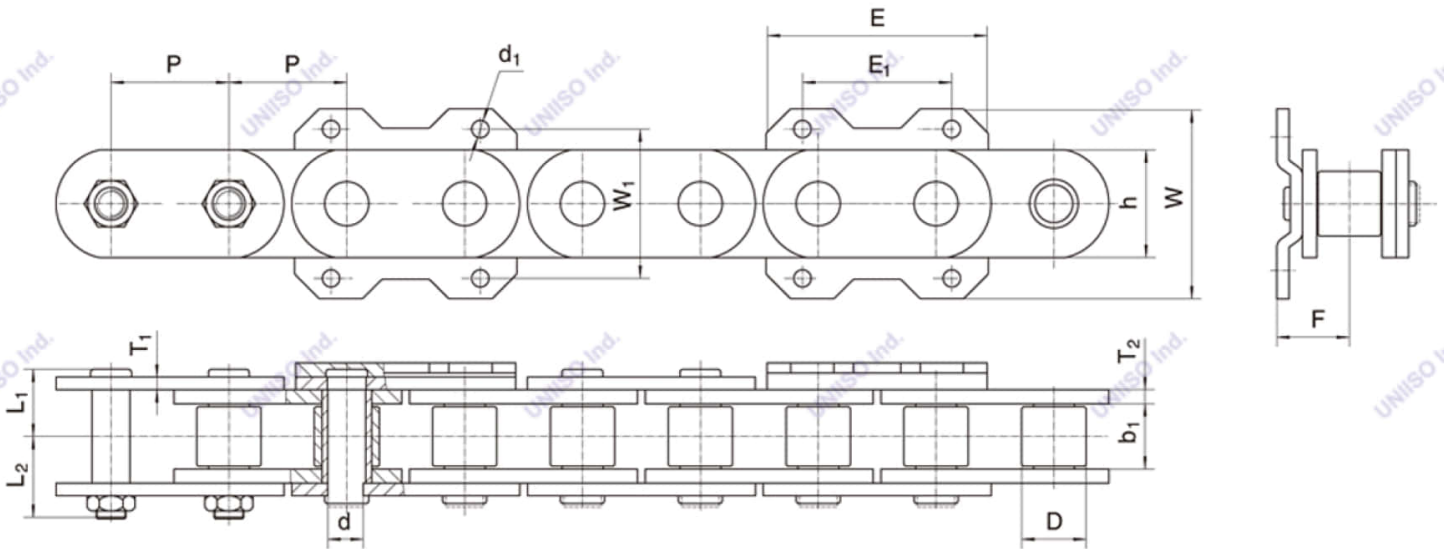
Bucket Elevator Chains & Attachments



链号	节距	内节内宽	滚子外径	销轴			链板		最小抗拉强度	每米重量			
Chain No.	Pitch	Width between inner sidebars	Roller Diameter	Pin			Sidebar		Ultimate Tensile Strength	Weight Per Meter			
				P	b _i (min)	D(max)	d	L ₁	L ₂	h	T ₁ /T ₂	Fu(min)	q
				mm	mm	mm	mm	mm	mm	mm	mm	kN	kg/m
NSE450	125	64	56	28	63.4	85.6	78	12	790	37.91			
NSE450A	125	63.8	60	28	69	88	80	14	790	45			
NSE500	125	70	65	33	72.3	81.7	90	14	980	51.56			
NSE500A	125	80	70	38	77	96	110	14	1100	67.11			
NSE500B	125	70	63.5	33	72.3	81.7	90	14	980	50.21			
NSE500C	125	70	64	33	72.15	96.85	90	14	980	50.43			
NSE1000	150	94.5	82	48	93.25	104.75	137	16/18	2000	98.97			
NSE1000E	150	94.5	80.2	48	93.25	104.75	137	16/18	2000	97.42			

链号	E ₁	E	W ₁	W	d ₁	F	连接销轴
Chain No.	mm	mm	mm	mm	mm	mm	Conn. Pin Type
NSE450	125	210	110	160	18	72	B
NSE450A	125	210	120	172	18	75	B
NSE500	125	210	125	172	18	78	A
NSE500A	125	226	136	176	18	83	B
NSE500B	125	210	125	172	18	78	B
NSE500C	125	210	125	172	18	78	B
NSE1000	190	280	190	242	22	100	B
NSE1000E	190	280	190	242	22	100	B

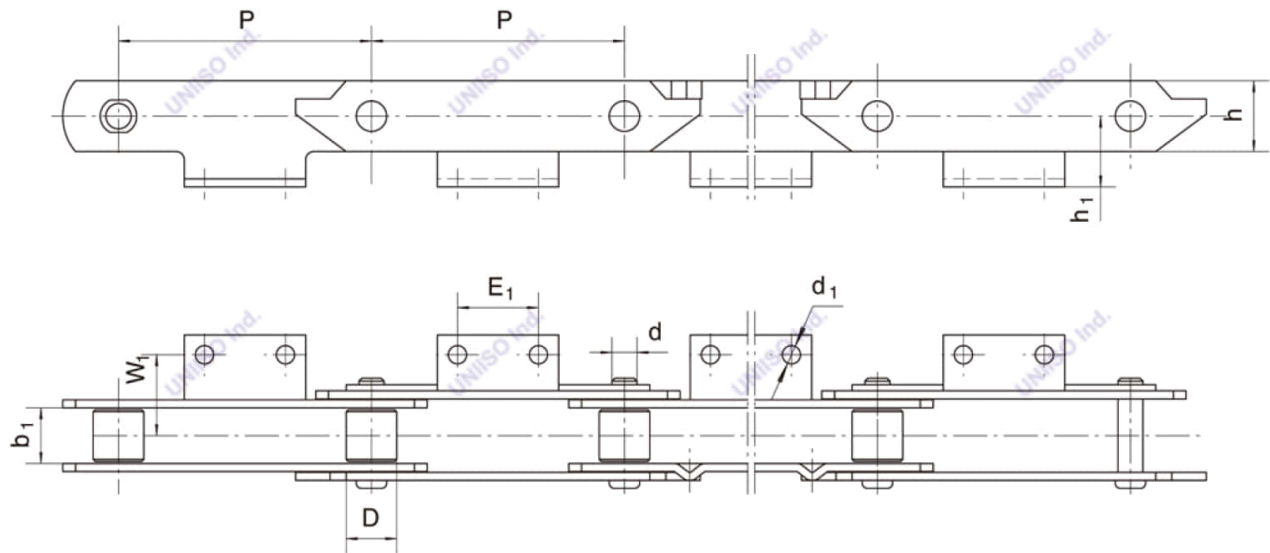
Bucket Elevator Chains & Attachments



链号	节距	内节内宽	滚子外径	销轴			链板		最小抗拉强度	每米重量
Chain No.	Pitch	Width Between inner sidebars	Roller Diameter	Pin			Plate		Ultimate Tensile Strength	Weight Per Meter
	P	b ₁ (min)	D(max)	d	L ₁	L ₂	h	T ₁ /T ₂	Fu(min)	q
	mm	mm	mm	mm	mm	mm	mm	mm	kN	kg/m
NSE1000A	150	88	82	48	90	101.5	144	16/18	2000	97.6
NSE1000B	150	94.5	82	48	93.25	104.75	144	16/18	2000	99.34
NSE1000C	150	94.5	82	48	93.25	104.75	137	16/18	2000	98.6
NSE1000D	150	94.5	82	48	93.25	104.75	144	16/18	2000	98.1

链号	E ₁	E	W ₁	W	d ₁	F
Chain No.	mm	mm	mm	mm	mm	mm
NSE1000A	190	283	190	242	22	97
NSE1000B	190	283	190	242	22	100
NSE1000C	190	283	190	242	22	100
NSE1000D	190	283	144	242	22	100

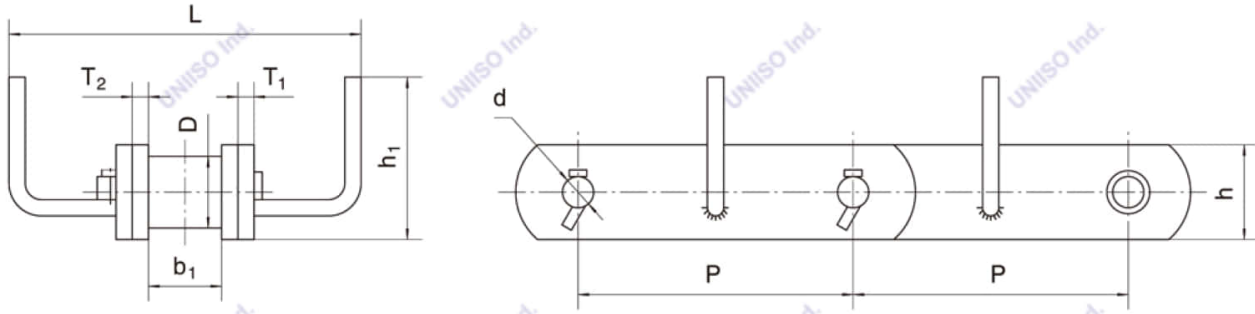
Apron Conveyor Chain



链号	节距	内节内宽	滚子外径	销轴	链板	最小抗拉强度
Chain No.	Pitch	Width between inner Sidebars	Roller Diameter	Pin	Sidebar	Ultimate Tensile Strength
	P	b_1 (min)	D (max)	d	h	Fu(min)
	mm	mm	mm	mm	mm	kN
STN250	250	55	50	25	70	350
STN250A	250	60	54	36	90	600
STN250B	250	45	40	26	65	350
STN250C	250	60	40	26	80	560
STN250D	250	62	60	30	80	600
STN250E	250	60	44.3	29.7	90	600
STN250F	250	45	40	26	70	350
STN315G	315	65	44	30	90	1500

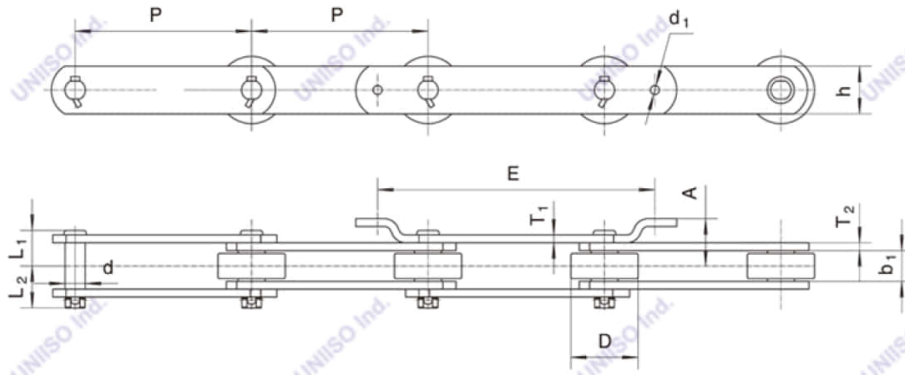
链号	h_1	F	E_1	d_1
Chain No.	mm	mm	mm	mm
STN250	70	80	80	18
STN250A	70	85	80	14
STN250B	59.5	70	80	14
STN250C	70	85	80	14
STN250D	72	90	85	16
STN250E	70	85	80	14
STN250F	60	70	80	14
STN315G	60	133.5	55	12.7

FU Series of Scraper Chain

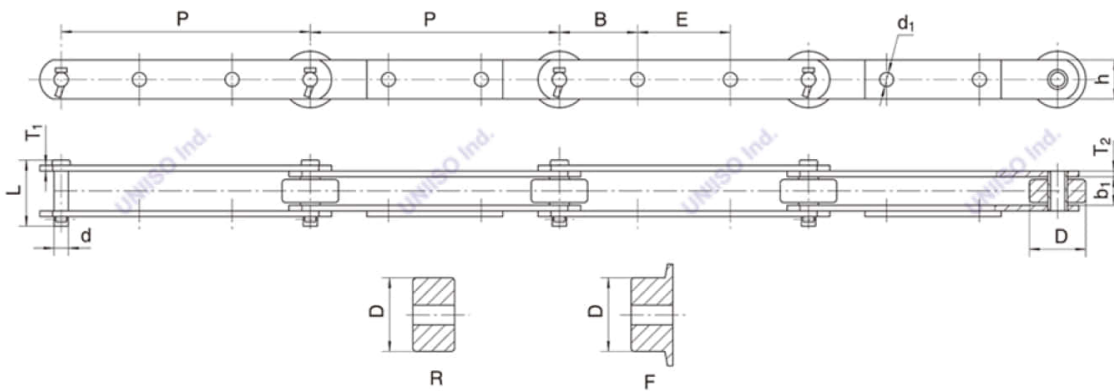


链号	节距	内节内宽	滚子外径	销轴	链板		挂钩高度	挂钩总宽	最小抗拉强度
Chain No.	Pitch	Width between inner sidebars	Roller Diameter	Pin	Sidebar		Distance between the top of scraper and the bottom of sidebar	Distance between scrapers	Ultimate Tensile Strength
	P	b ₁ (min)	D(max)	d	h	T ₁ /T ₂			Fu(min)
	mm	mm	mm	mm	mm	mm			kN
FU150	101.6	27	26.5	11.5	35	6	60	130	120
FU200	152.4	36.5	36	15.5	50	8	75	175	240
FU270	152.4	36.5	36	15.5	50	8	100	215	240
FU350	200	55	44.5	19	60	10	145	310	360
FU350H	200	57.6	48.5	22.2	75	10	160	320	480
FU410	200	51.8	41/44.5	19.1	60	10	160	380	360
FU410H	200	57.6	48.5	22.2	75	10	160	380	480
SSN200-U	200	60	60	30	82	12	174	416	700
FU500	300	67.5	63.5	31.75	90	12	200	457	560
FU500H	300	67.4	65	31.75	100	12	235	460	730
FU600	300	75	70	35	100	16	235	560	1000

Engineering Conveyor Chain



链号	节距	内节内宽	滚子外径	销轴		链板		最小抗拉强度	附件		
Chain No.	Pitch	Width between inner Sidebars	Roller Diameter	Pin		Sidebar		Ultimate Tensile Strength	ATT.		
	P	b _i (min)	D(max)	d	L	h	T ₁ /T ₂	Fu(min)	F	E	d _i
	mm	mm	mm	mm	mm	mm	mm	kN	mm	mm	mm
4004-G5	228.6	66.8	76.2	25.4	144.5	63.5	12.7	288	84.8	355.6	15.88
4009-G5	228.6	57.15	76.2	22.35	116.8	63.5	9.6	297	77	355.6	15.88
4010-G5	304.8	82.55	114.3	38.1	172.5	101.6	16	822	99.1	476.25	15.88
4065-G5	228.6	77.7	107.95	31.75	165.6	88.9	16	657	100	355.6	20.64



链号	节距	内节内宽	滚子外径	销轴		链板		最小抗拉强度	附件		
Chain No.	Pitch	Width between inner Sidebars	Roller Diameter	Pin		Sidebar		Ultimate Tensile Strength	ATT		
	P	b _i (min)	D(max)	d	L	h	T ₁ /T ₂	Fu(min)	B	E	d _i
	mm	mm	mm	mm	mm	mm	mm	kN	mm	mm	mm
RS911	228.6	50.8	76.2	16	87.63	50.8	7.9	146	79.5	69.85	11.11
SS922	228.6	50.8	88.9	19.05	108.7	50.8	9.6	151	76.2	76.2	12.7
SS927	228.6	50.8	88.9	19.05	108.7	50.8	9.6	151	76.2	76.2	12.7
SS933	228.6	57.15	101.6	22.35	117.1	63.5	9.6	213	82.55	63.5	12.7
SS1222	304.8	50.8	114.3	19.05	109.5	50.8	9.6	151	104.9	95.25	12.7
SS1227	304.8	50.8	88.9	19.05	109.5	50.8	9.6	151	104.9	95.25	12.7
SS1232	304.8	50.8	114.3	19.05	106.7	50.8	9.6	204	104.9	95.25	12.7
SS1233	304.8	57.15	101.6	22.35	117.85	63.5	9.6	275	104.9	95.25	12.7
SS4038	304.8	41.4	82.55	19.05	97	50.8	9.6	128	104.9	95.25	12.7
RS4850	304.8	55.6	76.2	22.35	116.1	63.5	9.6	280	104.9	95.25	19.05

UNIISO™

POWER TO THE WORLD



Shanghai UNIISO Industries Co.,Ltd.

Add: No.5699, Hangnan Rd. Fengpu Industrial Park

Fengxian Dist. Shanghai City, P.R.China.

Tel:+8617317253554

Email: sales@uniisoindustries.com

www.uniisoindustries.com

