

**UNIISO**<sup>TM</sup>  
POWER TO THE WORLD



**FORGE CHAIN / TROLLEY**

[www.uniisoindustries.com](http://www.uniisoindustries.com)

**UNIISO** Industries Co.,Ltd. was founded in 1987, has accumulated over 30 years' chain design, manufacture technology and experience in forging chain, casting chain,punching chain. the company covers an area of 50000 square meters.

**Our** main products including: sugar mill chain,palm oil chain, cement chain,sewage processing chain,asphalt mixing chain,paver chain,pintle chain,agricultural chain,forging chain, casting chain, enginnering chain. welded chain, all chains standard we are conform to ISO.ANSI,DIN,BS&JIS. UNIISO adopt the most advanced technology from Japan and Germany basis on own innovation to producing safe,reliable and excellence performance.

**Choosing** UNIISO, we will extend the lifespan in your production line and devices.

if you wanna know more about us, pls visit our website:

[www.uniisoindustries.com](http://www.uniisoindustries.com)



## UNIISO PRODUCTS SHOW

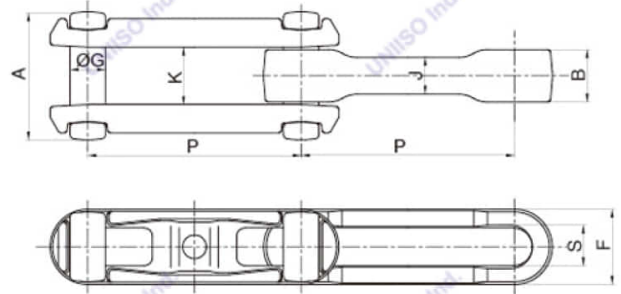




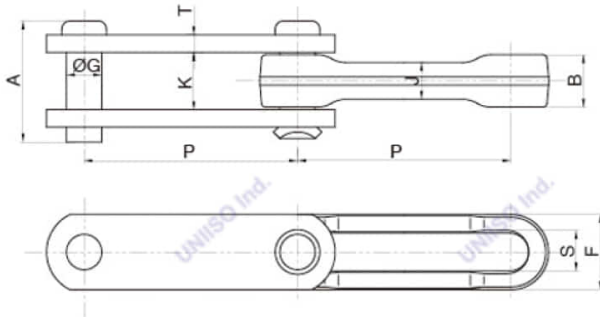
# Drop Forged Rivetless Chain



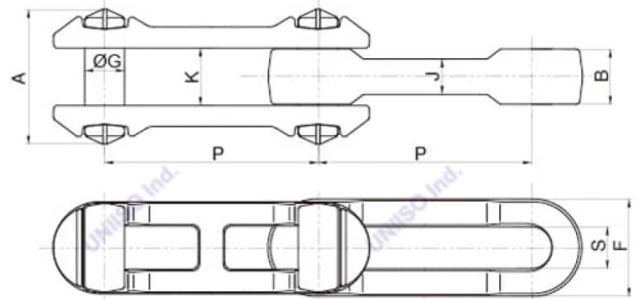
**X TYPE**



**S TYPE**



**H TYPE**

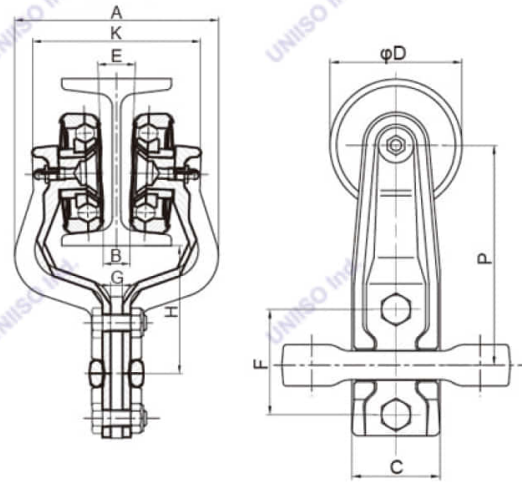
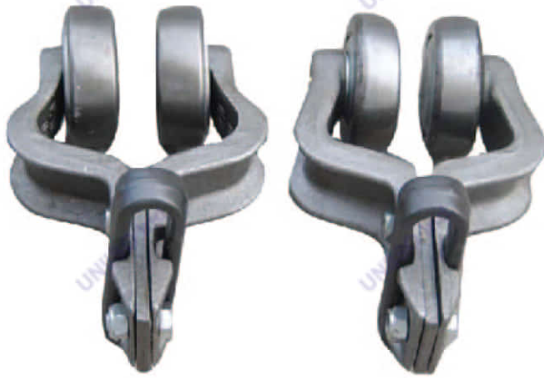


Unit:mm

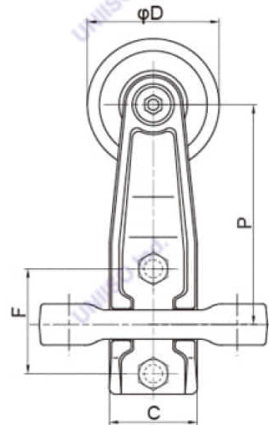
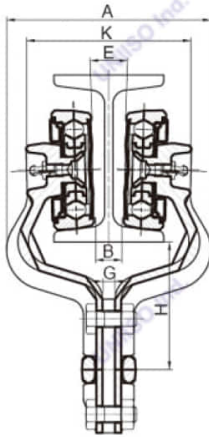
	Chain Size	Pitch	Dimension (mm)						Side Rotation Angle	One length Links	Total length/mm	Tension Intensity kN	Weight kg/m
			A	F	G	J	K	S					
Inch	80H	80	73	42	18.4	20	34.5	19.5	7	38	3032/3058	250	7.8
	X348	76.6	46	27	12.7	12.7	20.6	13.5	9	40	3050.5/3095.2	110	3.2
	X458	102.4	57	37	16	16	26.5	17.5	9	30	3063.1/3090.2	210	5.2
	468H	102.4	84.1	47.8	18	29.5	42.9	22.2	9	30	3063.1/3090.2	318	11.5
	X658	153.2	55.6	35	16	16	57.2	17.5	7	20	3055.1/3082.8	210	4
	X678	153.2	77	50.8	22.2	21	34.2	25	7	20	3055.1/3082.8	320	9.5
	678	153.2	77	50.8	22.2	21	34.2	25	7	20	3055.1/3082.8	320	9.5
	698	153.2	95.25	64	28	25.4	41.3	32	5	20	3055.1/3082.8	515	17
	998	229.4	95.25	67.5	28	25.4	41.3	32	5	13	3205/3232.4	515	14.8
	9118	229.4	123.8	76.2	35	33.5	52	38.1	5	13	3205/3232.4	832	24.2
	S348	76.6	38.9	28.6	12.7	12.7	20.6	13.5	9	40	3050.5/3095.2	110	3.2
	S458	102.4	52.1	35	16	16	26.5	17.5	9	30	3063.1/3090.2	210	5.2
	S678	153.2	69.8	50.8	22.2	21	34.2	25	7	20	3055.1/3082.8	320	9.5
S698	153.2	73	68.3	28	25.4	41.3	32	5	20	3055.1/3082.8	515	17	
S9118	229.4	98.4	77.8	35	33.5	52	38.1	5	13	3205/3232.4	832	24.2	
Metric	F100	100	57	37	16	16	26.5	17.5	9	30	2991.3/3018.3	210	5.2
	F160	160	78	54	24	20.5	36	28	7	20	3190.7/3219.5	318	10.3

# X348 Trolley--3 Inch

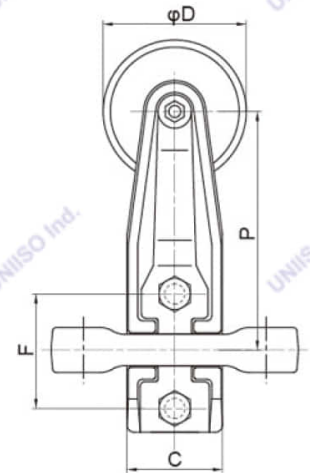
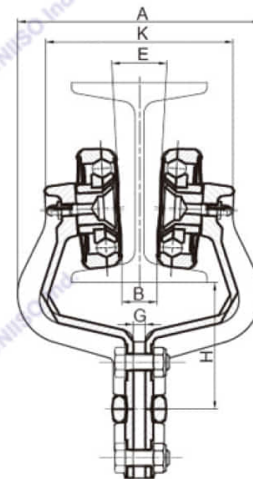
**X348 Trolley (A Type)**



**X348 Trolley (B Type)**



**X348 Trolley (C Type)**

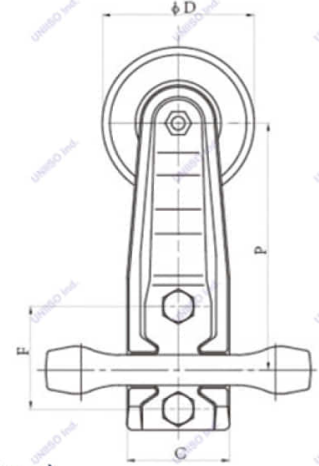
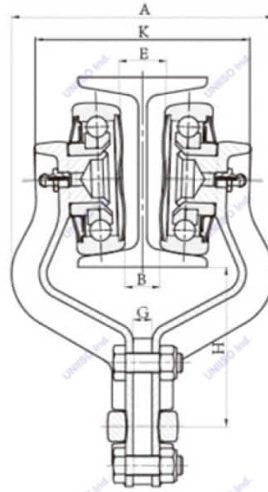


Unit:mm

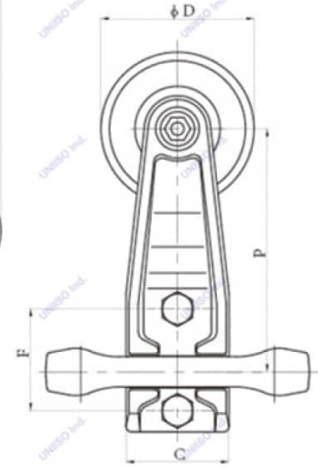
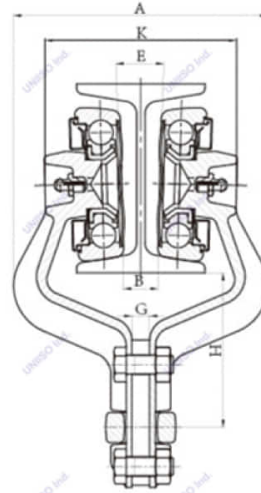
Name	Dimension (mm)											Weight KG	I-Beam Size	Single-Point Load(KG)	Allowed Load(KG)	Ultimate Load(KG)
	Type	P	H	A	B	C	D	E	F	G	K					
X348 Trolley-I	A	100	64	102	14	40	60	4 °	47.8	6	84	1.3	I8 80*50*4.5			
X348 Trolley-II	B	100	64	102	14	40	60	3 °	47.8	6	82	1.3	I8 80*50*4.5	100	1100	1800
X348 Trolley-III	C	100	64	122	16	40	60	6 °	47.8	6	94	1.3	I10 100*48*5.3			

# X458 Trolley--4 Inch

X458 & F100 Trolley (A Type)



4 inch Trolley (B Type)

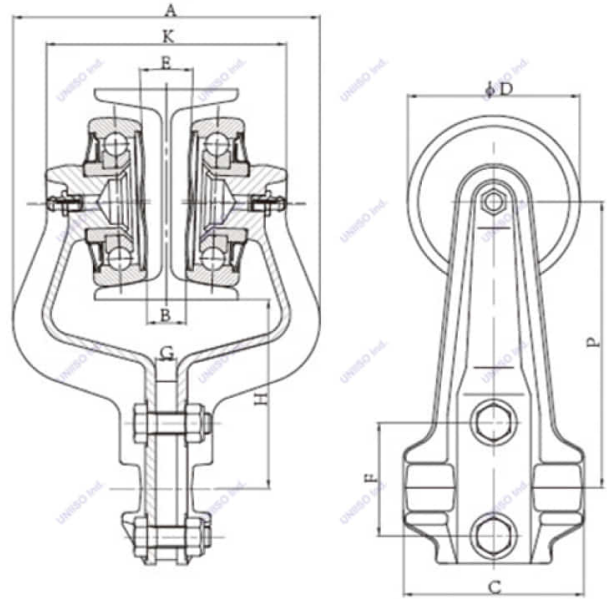


Name	Dimension											Weight (KG)	I-Beam Size	Single -point Load(KG)	Allowed Load (KG)	Ultimate Load (KG)
	型号	P	H	A	B	C	D	E	F	G	K					
Trolley - I	A	126	79	138	18	54	82	4 °	54	9.5	113	2.7	I10	200	1800	3600
Trolley - II	A	127	80	138	18	56	82	4 °	54	9.5	113					
Trolley - III	A	130	83	138	18	54	82	4 °	54	9.5	113					
Trolley - IV	B	128.6	81	134.5	18	54	81	3 °	54	9.5	101.5					
Lengthened trolley	A	150	103	138	18	54	82	4 °	54	9.5	113					

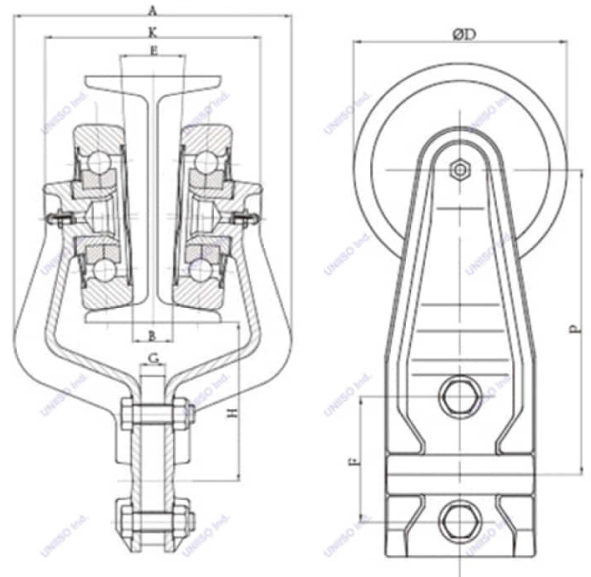
## X678 Trolley--6 Inch & T160 Trolley



X678 Trolley



T160 Trolley

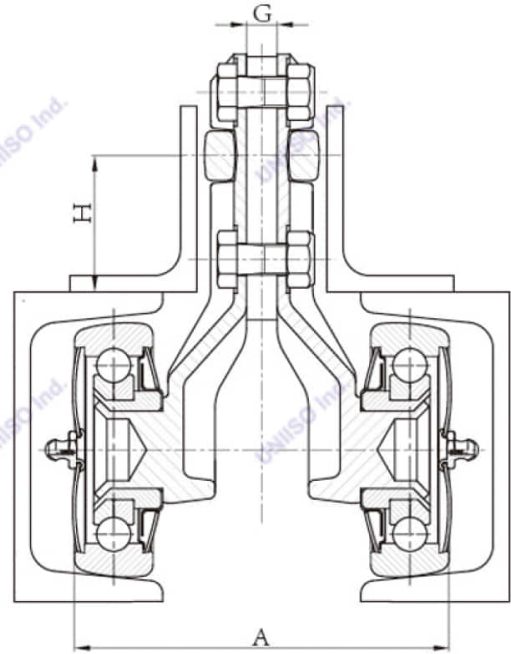
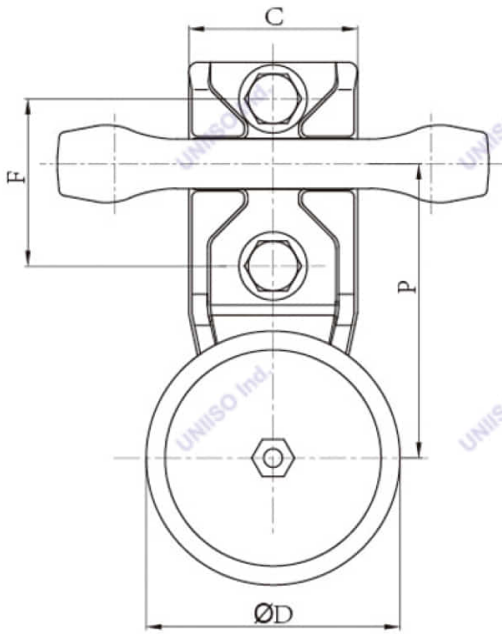


Unit:mm

Name	Dimension										Weight (KG)	I-Beam Size	Single -point Load(KG)	Allowed Load (KG)	Ultimate Load (KG)
	P	H	A	B	C	D	E	F	G	K					
X678-Trolley-I	136	89	146	18	86	82	4 °	54	9.5	114	3.2	100*48*5.3	600	5000	7700
X678-Trolley-II	134.5	87.5	142	18	86	82	4 °	54	9.5	106	2.8	100*48*5.3	550	4500	7200
T160-Trolley-I	171	103	180	26	84	120	6 °	70	15	140	9.7	140*80*5.5 160*88*6.0	750	4000	8000
T160-Trolley-II	170	102	174	26	86	120	4 °	70	15	148	8.8	140*80*5.5 160*88*6.0	700	3500	7500



## X348&X458 Opposite Direction Trolley

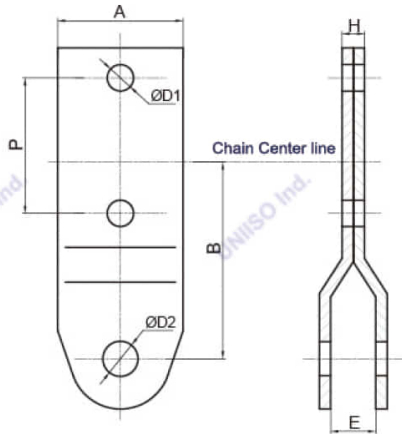


Unit:mm

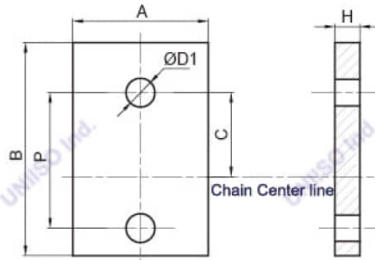
Name	Dimension							Weight (KG)	I-Beam Size	Single -point Load(KG)	Allowed Load (KG)	Ultimate Load (KG)
	P	H	A	C	D	F	G					
X348-Trolley-I	83	42	105	40	60	48	10	1.35	80*50*4.5	100	1100	1800
X348-Trolley-II	86	45	93	40	60	48	10	1.35	80*50*4.5	100	1100	1800
X458-Trolley-I	95	44	120	54.5	60	54	10	2.5	100*48*5.3	200	1800	3600

# UNIISO Trolley Hooks

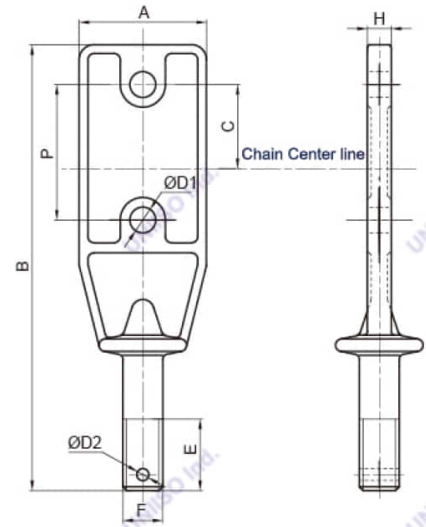
**H-Hook**



**I-Hook**

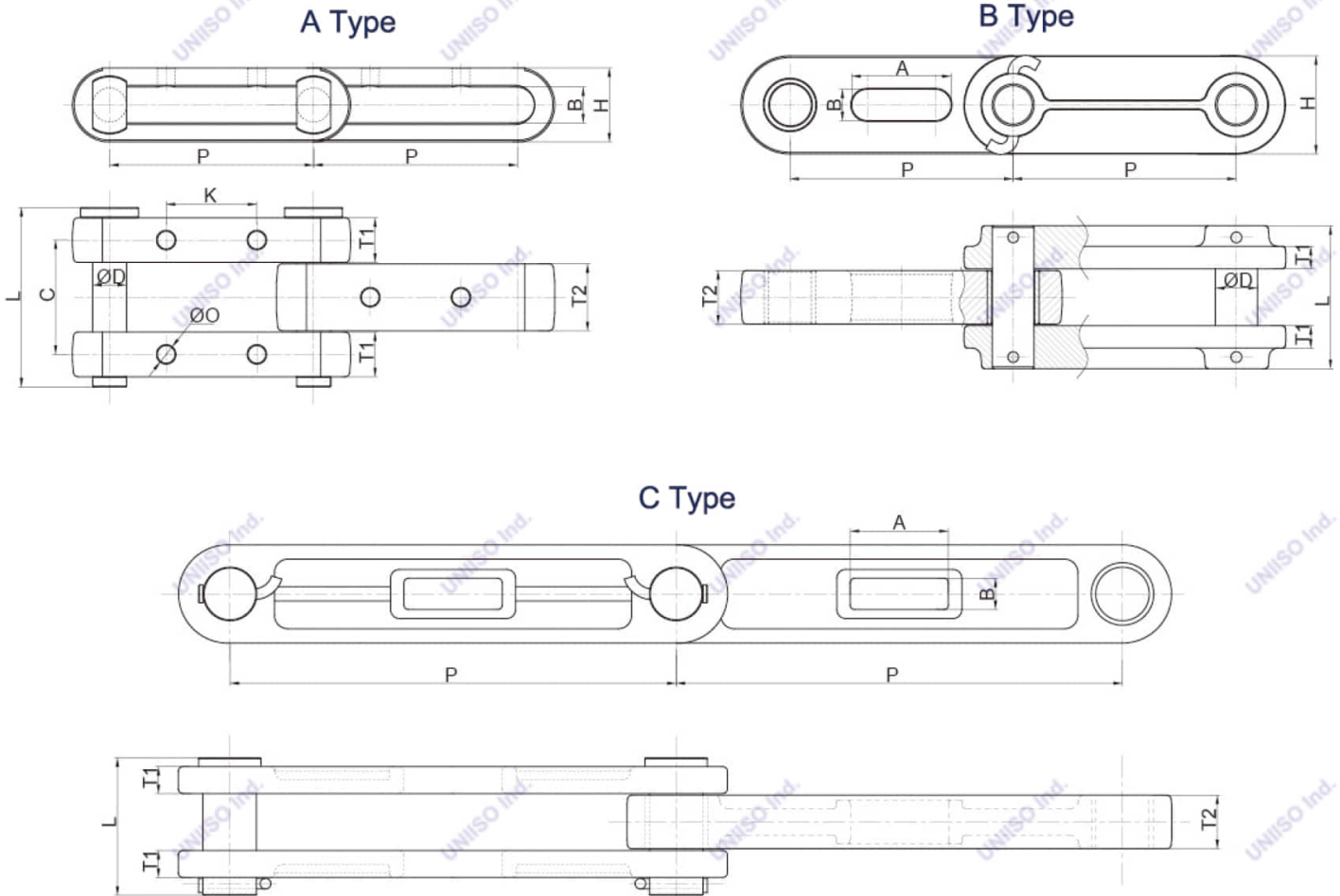


**B-Hook**



Chain No.	unit:mm										Weight KG	Allowed load KG	Ultimate load KG
	Type	P	A	B	C	D1	D2	E	F	H			
X348	H	47.8	38	58	25.4	9	14.5	14	16.6	6	0.24	1100	1800
X458	H	54	50	78.5	33.5	10.5	14	18	19	9.5	0.64	1800	3600
XT160	H	70	80	133.5	43.5	13	20	32	47	16	1.25	4000	8000
X348	I	47.8	38	68	25.4	9	/	/	/	6	0.12	/	/
X458	I	54	50	80	33.5	11.5	/	/	/	10	0.26	/	/
X678	I	54	50	80	33.5	11.5	/	/	/	10	0.26	/	/
XT160	I	70	80	105	43.5	13	/	/	/	15	1.1	/	/
4196	B	47.8	38.1	146.1	25.4	8.3	3.6	22.2	1/2"	6.4	0.2	1100	1800
4221	B	54	50.8	177.8	33.5	10.3	4.8	28.6	5/8"	9.5	0.45	1800	3600
4249	B	70	76.2	222	43.5	14.3	5.6	34.9	7/8"	12.7	1.02	5000	7700

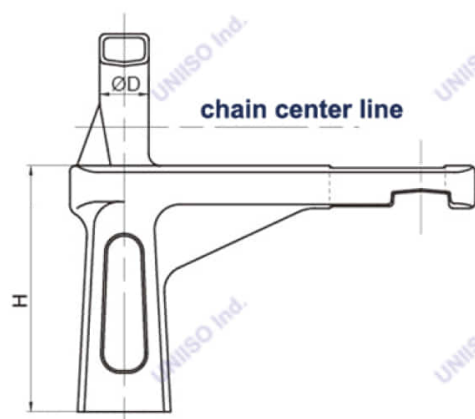
# UNIISO Forged Sugar Mill Chains



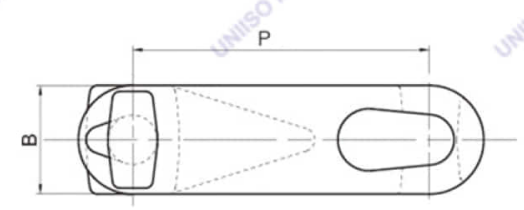
## Dimension

Chain No.	Type	Pitch	Chain Plate (mm)								Average Tensile load KN	Weight kg/m
			D	L	T1	T2	O	H	A	B		
DK100-152	A	152.4	30	158	45	45	13	60	/	32	1000	28.7
B5291	A	152.4	39	158	38.1	50.8	17	77.8	/	41	1100	47.9
3850	A	228.6	39	132	40	50	17	80	/	40	1000	32.4
5075	A	228.6	39	201	50	75	17	83	/	40	1000	48.5
NF250	B	250	47	181.5	30	60	/	110	111	35	1720	52
NF500	C	500	60	157.5	31	62	/	150	125	45	2940	77

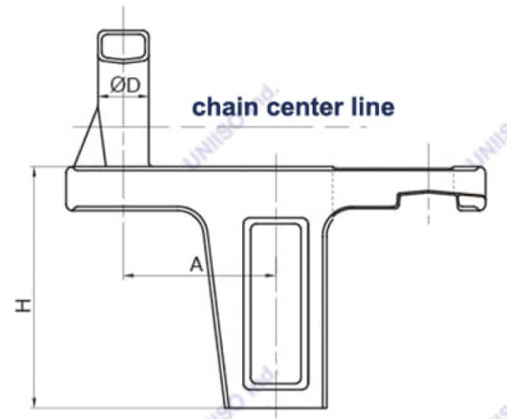
# UNIISO 3'' Forge Pusher



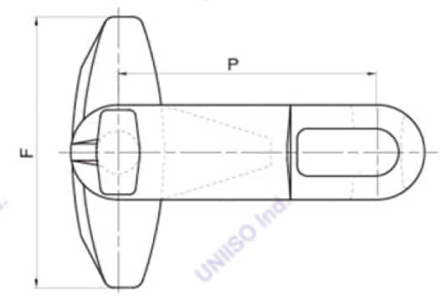
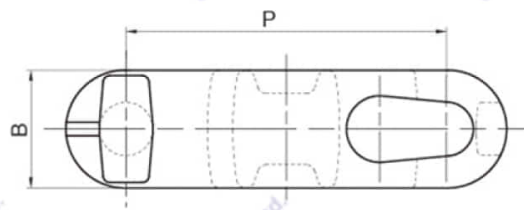
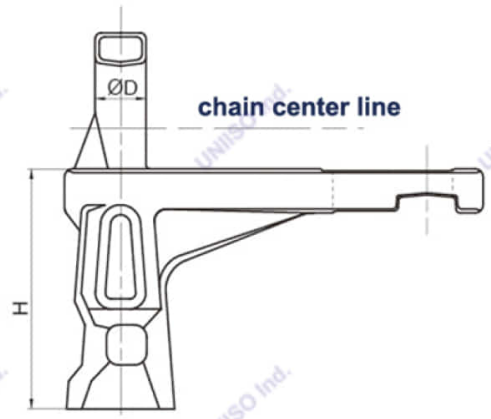
**X348 Pusher (A Type)**



**X348 Pusher (B Type)**



**X348 Pusher (C Type)**

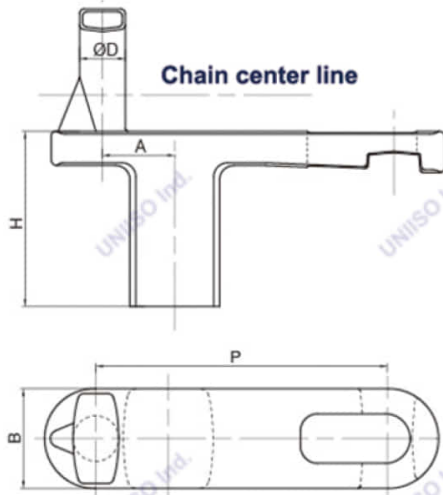


**Dimension**

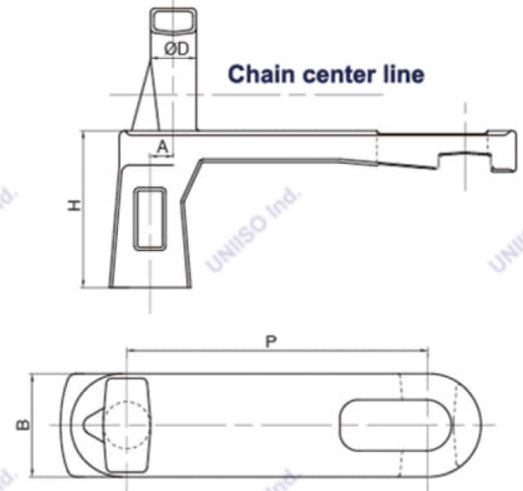
Name	Unit:mm					Weight KG	Allowed load KG	Ultimate load KG
	P	H	A	D	F			
<b>X348 Pusher-A</b>	76.6	63.5	/	12.7	/	0.42	900	11000
<b>X348 Pusher-A</b>	76.2	60.3	38.1	12.7	/	0.45	900	11000
<b>X348 Pusher-A</b>	76.6	60	/	12.7	80	0.65	900	11000

# UNIISO 4"Forged Pusher

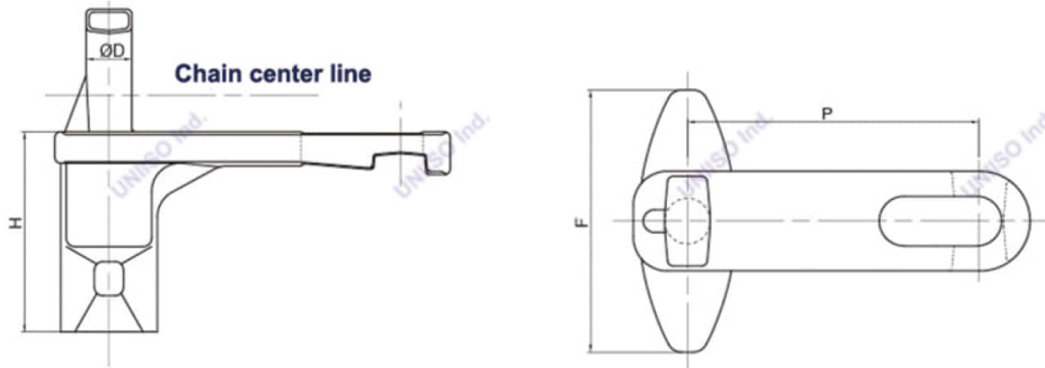
**X458 Pusher (B Type)**



**X458 Pusher (A Type)**



**X458 Pusher (C Type)**



**Dimension**

Name	unit:mm						Weight KG	Allowed load KG	Ultimate load KG
	P	H	A	B	D	F			
<b>X458 Pusher-A</b>	102.4	55	8.2	35	16	/	0.7	1500	2100
<b>X458 Pusher-B</b>	102.4	61.5	25.4	35	16	/	0.75	1500	2100
<b>X458 Pusher-C</b>	102.4	70.3	/	35	16	92	1.35	1500	2100

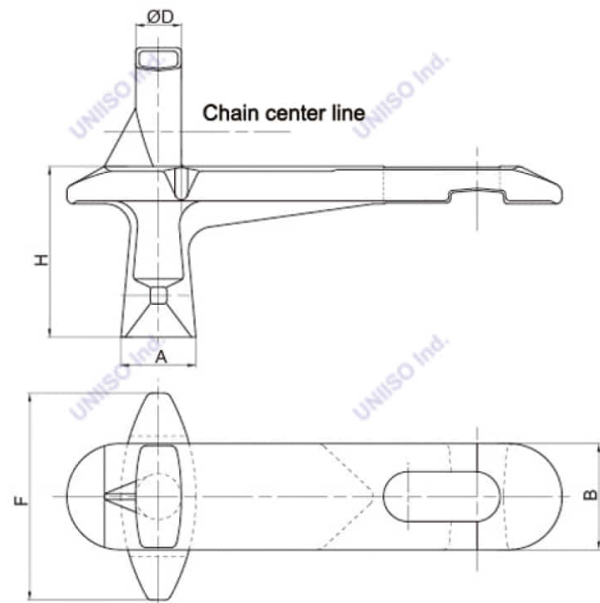
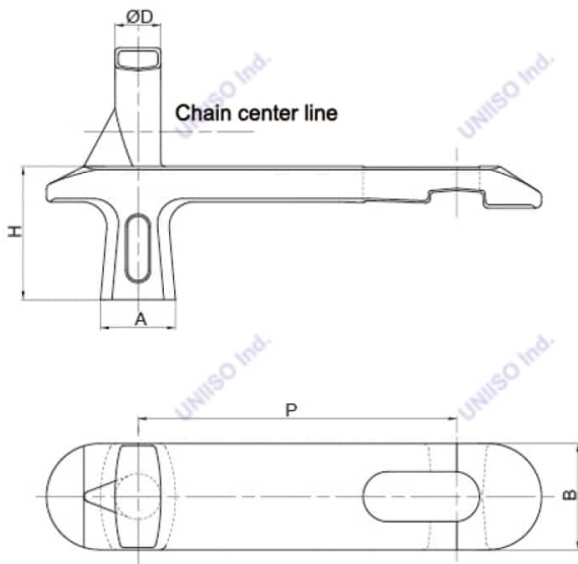
## UNIISO 6'' Forge Pusher



X678 Pusher (A Type)



X678 Pusher (B Type)

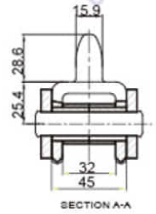
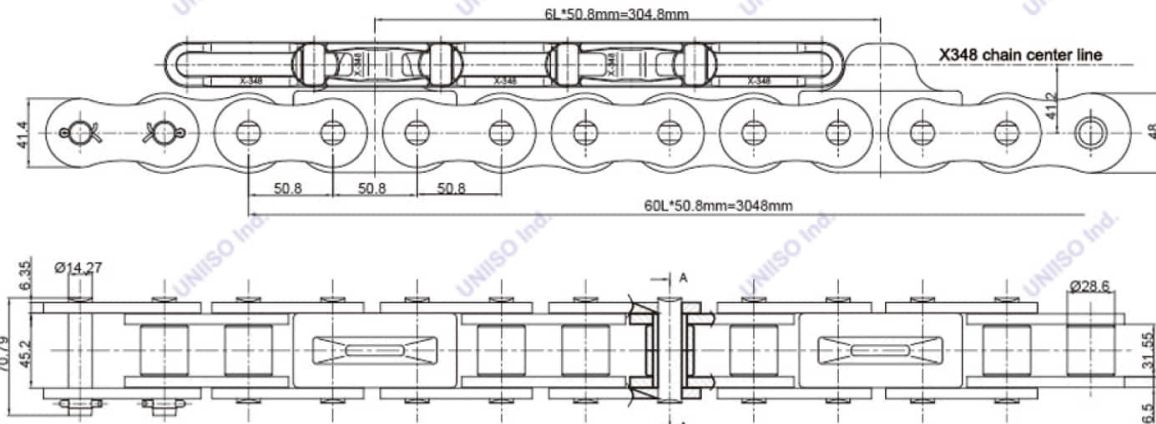


### Dimension

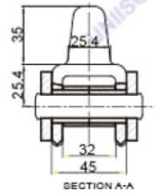
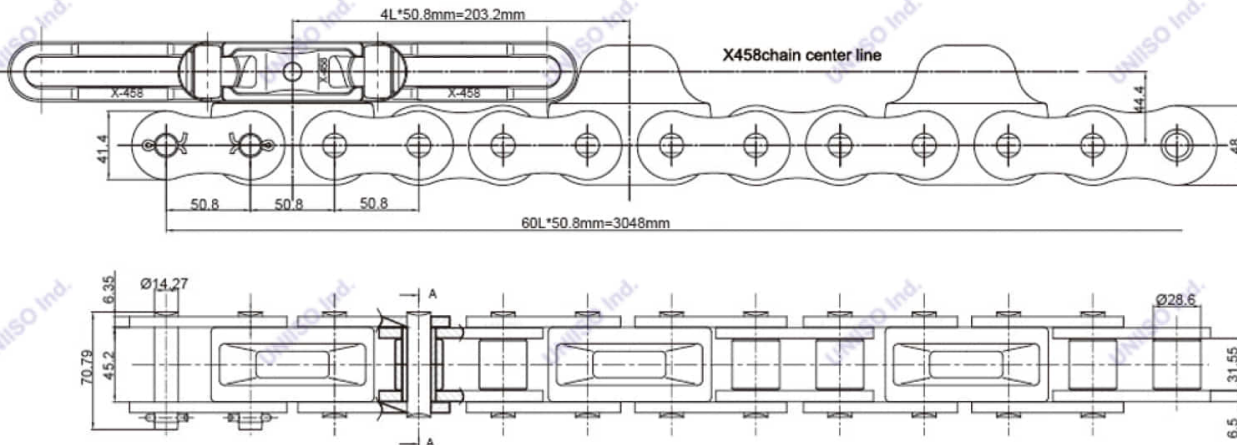
Name	Unit:mm						Weight KG	Allowed load KG	Ultimate load KG
	P	H	A	B	D	F			
X678 Trolley-A	153.2	64	36	51	22	/	1.65	2700	3800
X678 Trolley-B	153.2	82	36	51	22	100	2.3	2700	3800

## UNIISO Caterpillar Chains

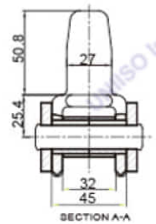
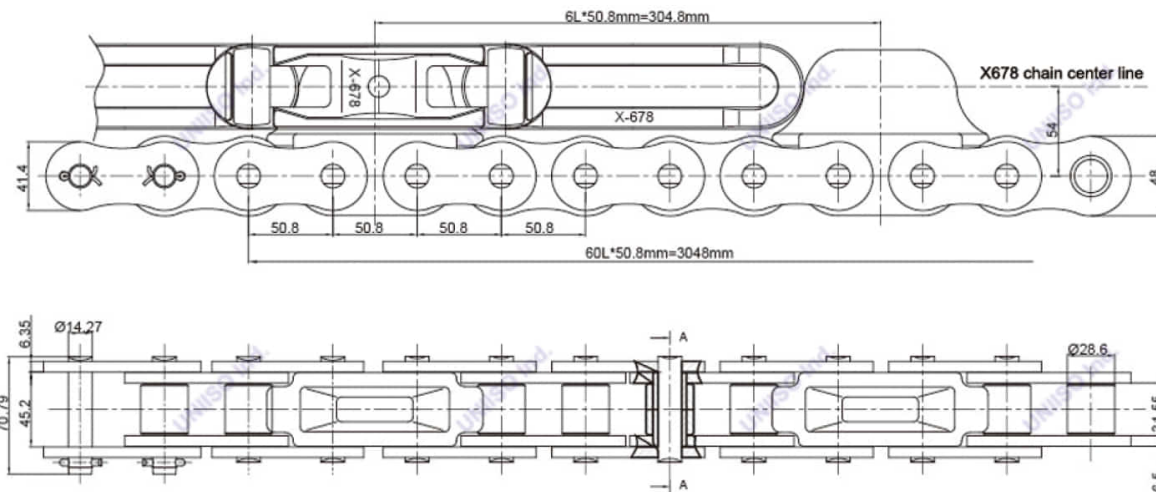
**X348 Caterpillar Chain**



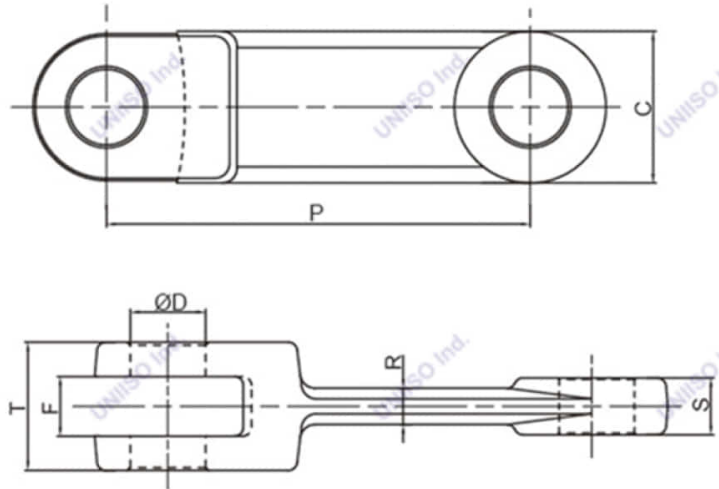
**X458 Caterpillar Chain**



**X678 Caterpillar Chain**



## Forged Scraper Chain



### Dimension

Chain No.	Unit:mm							Weight KG	Material	Hardness	Working load	Ultimate load
	P	T	C	S	F	R	D					
10160B	101.6	24	36	13	14	6	14	0.32	20CrMnTi	Surface HRC56-64* Depth 0.6-1.2mm	18	100
10160	101.6	30	36	13	14.5	9	14	0.36	20CrMnTi	Surface HRC56-64* Depth 0.6-1.2mm	21.6	120
14218	142	42	50	19	20.5	11	25	1.15	20CrMnTi	Surface HRC56-64* Depth 0.6-1.2mm	48.6	270
14226	142	62	50	28	30	15	25	1.75	20CrMnTi	Surface HRC56-64* Depth 0.6-1.2mm	61.2	340
20028	200	66	60	30	32	18	30	2.8	20CrMnTi	Surface HRC56-64* Depth 0.6-1.2mm	72	400
26014	260	70	75	31	33	20	34	5.2	20CrMnTi	Surface HRC56-64* Depth 0.6-1.2mm	135	750
142N	142	43	50	19	22	12.5	25	1.2	40Cr	Quenching HRC36-44*	75.6	420
150D	142	42	50	19	20.5	11	25	1.15	40Cr	Quenching HRC36-44*	75.6	420
MG20	200	70	50	27	29	17	35	3.78	40Cr	Quenching HRC36-44*	144	800
MG20B	200	70	50	27	29	17	30	3.82	40Cr	Quenching HRC36-44*	140.4	780
MG20C	200	70	50	27	29	17	28	3.85	40Cr	Quenching HRC36-44*	122.4	680
MS32	200	42	50	20	22	12	25	1.4	40Cr	Quenching HRC36-44*	75.6	420
MS55	200	80	70	35	38	25	28	4.36	40Cr	Quenching HRC36-44*	138.6	770
3006	200	65	70	30	33	24	32	3.6	40Cr	Quenching HRC36-44*	160.2	890
MS63	250	70	80	30	33	20	32	4.93	40Cr	Quenching HRC36-44*	147.6	820
S16	100	30	27	15	16	8	14	0.3	40Cr	Quenching HRC36-44*	16	88
S20	125	34	33	17	18	8	17	0.37	40Cr	Quenching HRC36-44*	19.4	108
S25	160	48	39	23	25	13	20	1.28	40Cr	Quenching HRC36-44*	55.8	310
S30	142	46	49	22	23.5	14	25	1.3	40Cr	Quenching HRC36-44*	91.80	510
Z16	100	40	35	18	20	12	17	0.4	40Cr	Quenching HRC36-44*	32.4	180
Z20	125	50	46	24	26	15	20	0.67	40Cr	Quenching HRC36-44*	59.4	330
Z20D	125	52	60	24	26	16	26	1.15	40Cr	Quenching HRC36-44*	82.8	460
Z25	160	58	55	28	30	18	25	2.25	40Cr	Quenching HRC36-44*	82.8	460
Z25D	160	66	64	29	31	22	28	2.6	40Cr	Quenching HRC36-44*	120.6	670
Z30	142	64	50	29	30.5	18	25	1.8	40Cr	Quenching HRC36-44*	111.6	620



## Forged Chain with different Scraper

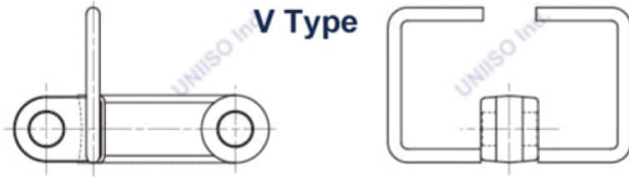
**T Type**



**O Type**



**V Type**



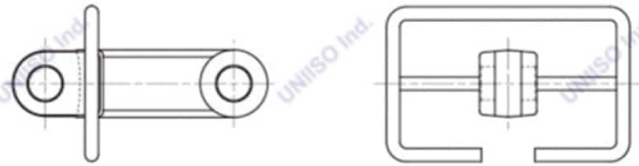
**L Type**



**U Type**



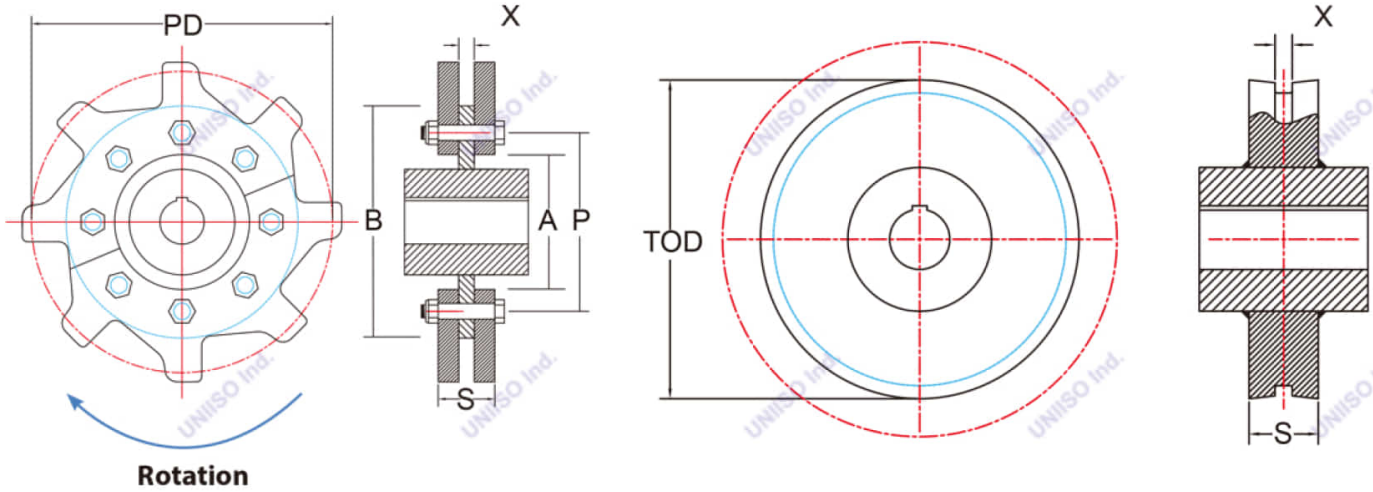
**H Type**



**B Type**



# UNIISO Segmental Sprockets



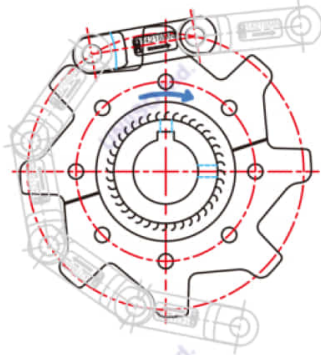
## Sprocket Hub Detail

	Number of Teeth	Sprocket Pitch Diameter	Trailer Outside Diameter	Segment ID	Flange Diameter	Number of Bolt Holes	Bolt Diameter	Bolt PD	X	S	Recommended Max Bore
		PD	TOD	A	B		P				
		in					mm	in			
UNIISO 1016	7	9.26	7.52	4.250	6.800	6	12	5.750	0.500	1.50	2.0
	8	10.49	8.50	5.669	7.700	6	12	6.625	0.500	1.50	3.0
	9	11.74	10.24	6.850	9.100	6	12	7.875	0.500	1.50	4.0
	10	13.00	11.61	7.047	10.400	8	12	9.500	0.500	1.50	4.0
	11	14.25	12.34	8.622	11.800	8	16	10.250	0.500	1.50	5.0
	12	15.52	14.00	8.622	12.400	8	16	10.250	0.500	1.50	5.0
UNIISO 14218	6	11.18	9.21	5.375	7.500	6	12	6.625	0.625	1.88	3.0
	7	12.89	11.00	6.375	9.200	6	16	7.875	0.625	1.88	4.0
	8	14.61	12.60	7.375	11.000	8	20	9.500	0.625	1.88	5.0
	9	16.35	14.25	9.449	13.000	8	20	11.250	0.625	1.88	7.0
	10	18.09	16.34	9.449	13.000	8	20	11.250	0.625	1.88	7.0
	11	19.84	17.87	12.205	16.500	8	20	14.500	0.625	1.88	8.0
	12	21.61	19.69	13.580	18.300	8	20	16.339	0.625	1.88	8.5
	13	23.36	21.46	14.961	20.500	8	20	18.500	0.625	1.88	9.0
UNIISO 14226	6	11.18	9.21	5.375	7.500	6	12	6.625	0.750	2.25	3.0
	7	12.89	11.00	6.375	9.200	6	16	7.875	0.750	2.25	4.0
	8	14.61	12.60	7.375	11.000	8	20	9.500	0.750	2.25	5.0
	9	16.35	14.25	9.449	13.000	8	20	11.250	0.750	2.25	7.0
	10	18.09	16.34	9.449	13.000	8	20	11.250	0.750	2.25	7.0
	11	19.84	17.87	12.205	16.500	8	20	14.500	0.750	2.25	8.0
	12	21.61	19.69	13.580	18.300	8	20	16.339	0.750	2.25	8.5
	13	23.36	21.46	14.961	20.500	8	20	18.500	0.750	2.25	9.0
14	25.13	23.15	14.961	21.500	8	20	18.500	0.750	2.25	9.0	

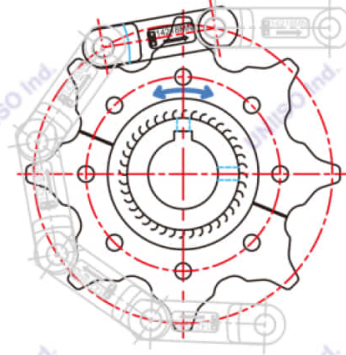
Details on 216mm and 260 mm sprockets and trailers available upon request

Additional Teeth Options Available

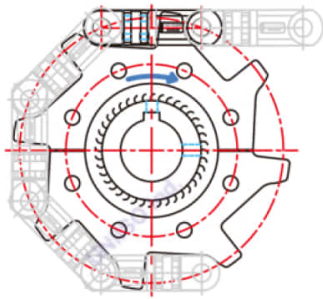
## UNIISO Segmental Sprockets



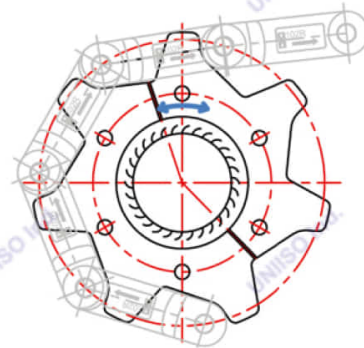
**Standard Profile Drive Sprocket**



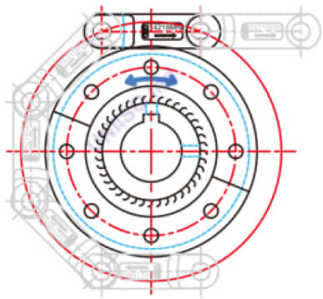
**Reversible Symmetrical Drive Sprocket**



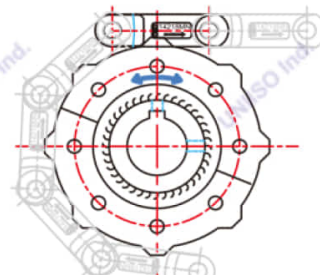
**Double/Triple Drive Sprocket**



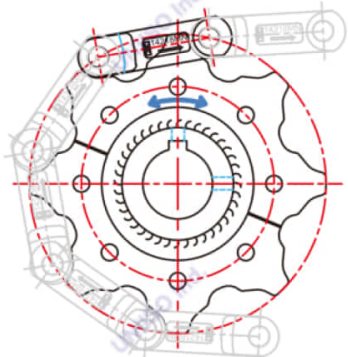
**Reversible Asymmetrical Drive/Trailer Sprocket (102R Only)**



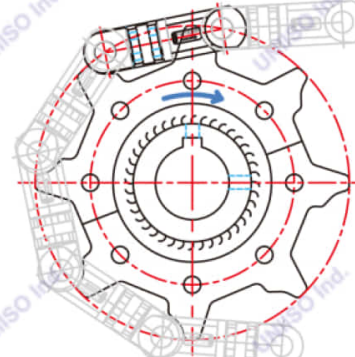
**Smooth Idler Trailer Wheel (Segmental)**



**"Star" Trailer Idler Wheel (Segmental)**

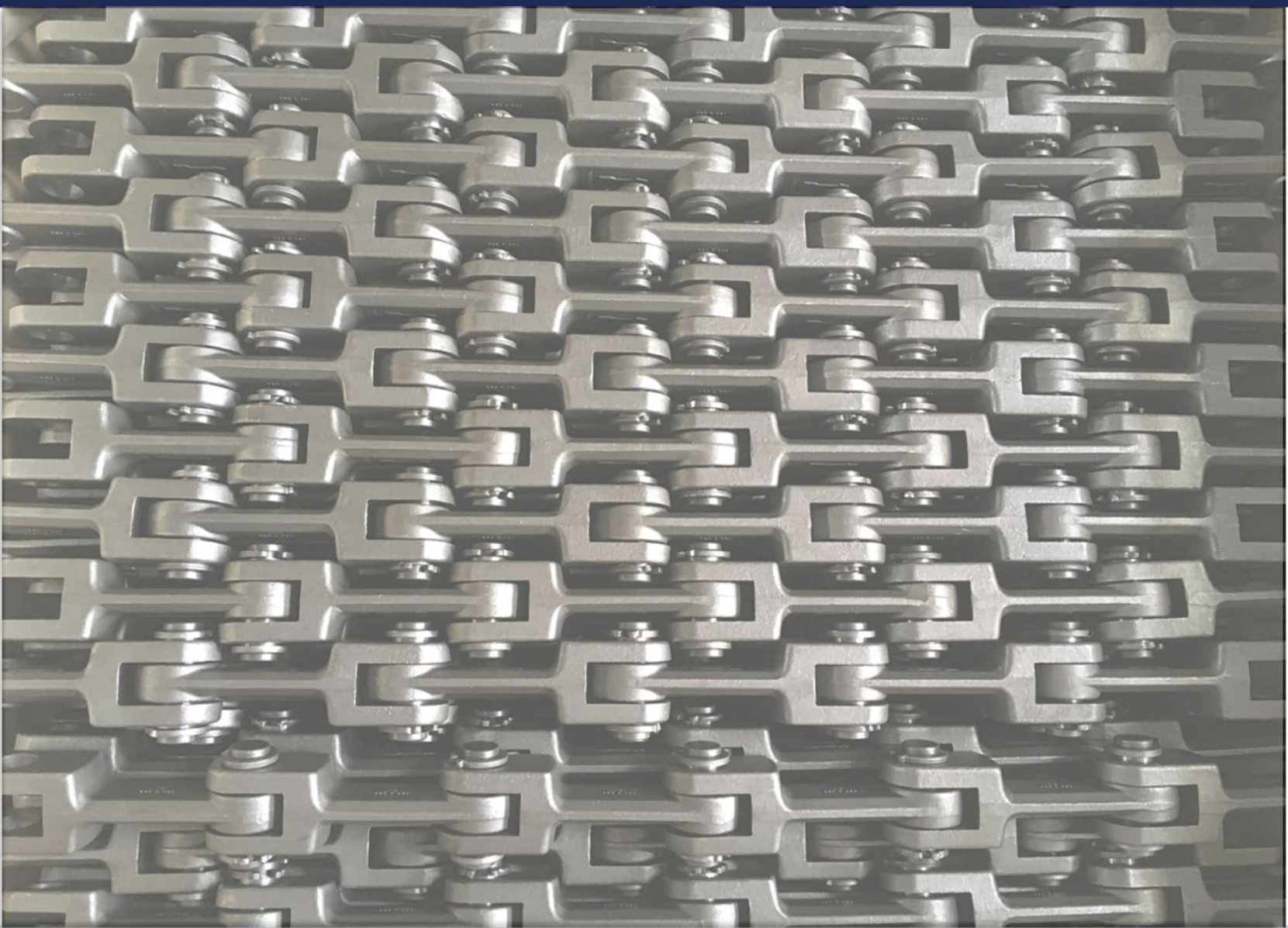


**Self Cleaning Trailer Wheel**



**Double/Triple Toothed Trailer**

**UNIISO**<sup>TM</sup>  
**POWER TO THE WORLD**



**Shanghai UNIISO Industries Co.,Ltd.**

**Add:** No.5699, Hangnan Rd. Fengpu Industrial Park

Fengxian Dist. Shanghai City, P.R.China.

**Tel:**+8617317253554

**Email:** sales@uniisoindustries.com

**www.uniisoindustries.com**

