

UNIISOTM
POWER TO THE WORLD



PALM OIL MILL CHAIN & HEAVY DUTY CHAIN

www.uniisoindustries.com

UNIISO Industries Co.,Ltd. was founded in 1987, has accumulated over 30 years' chain design, manufacture technology and experience in forging chain, casting chain,punching chain. the company covers an area of 50000 square meters.

Our main products including: sugar mill chain,palm oil chain, cement chain,sewage processing chain,asphalt mixing chain,paver chain,pintle chain,agricultural chain,forging chain, casting chain, enginnering chain. welded chain, all chains standard we are conform to ISO.ANSI,DIN,BS&JIS. UNIISO adopt the most advanced technology from Japan and Germany basis on own innovation to producing safe,reliable and excellence performance.

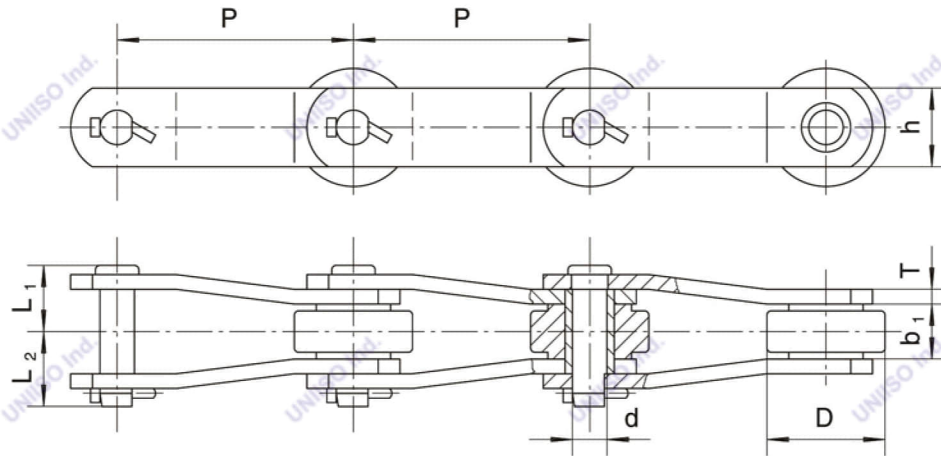
Choosing UNIISO, we will extend the lifespan in your production line and devices.

if you wanna know more about us, pls visit our website:

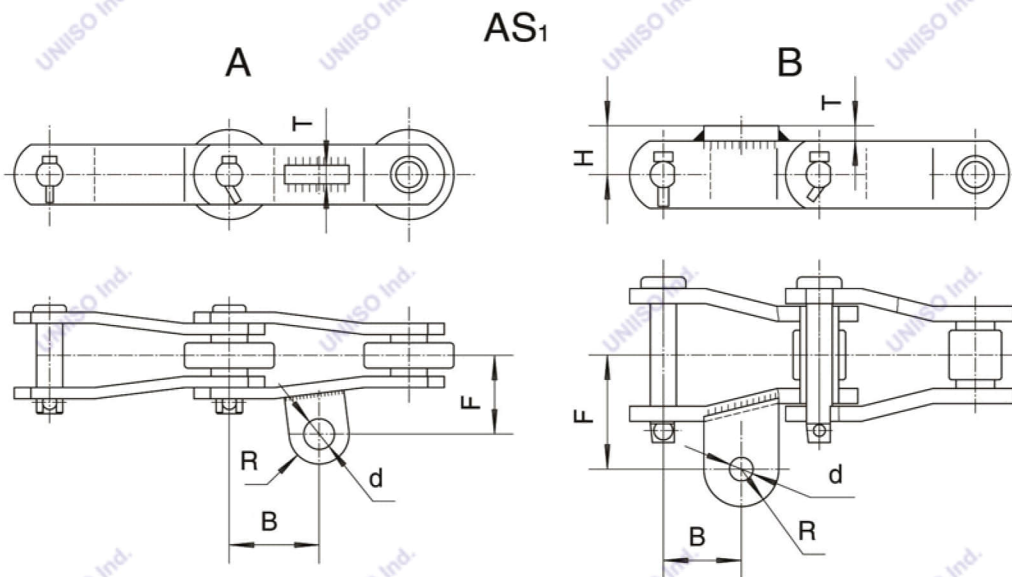
www.uniisoindustries.com



Palm Oil Chains with Bent Plate

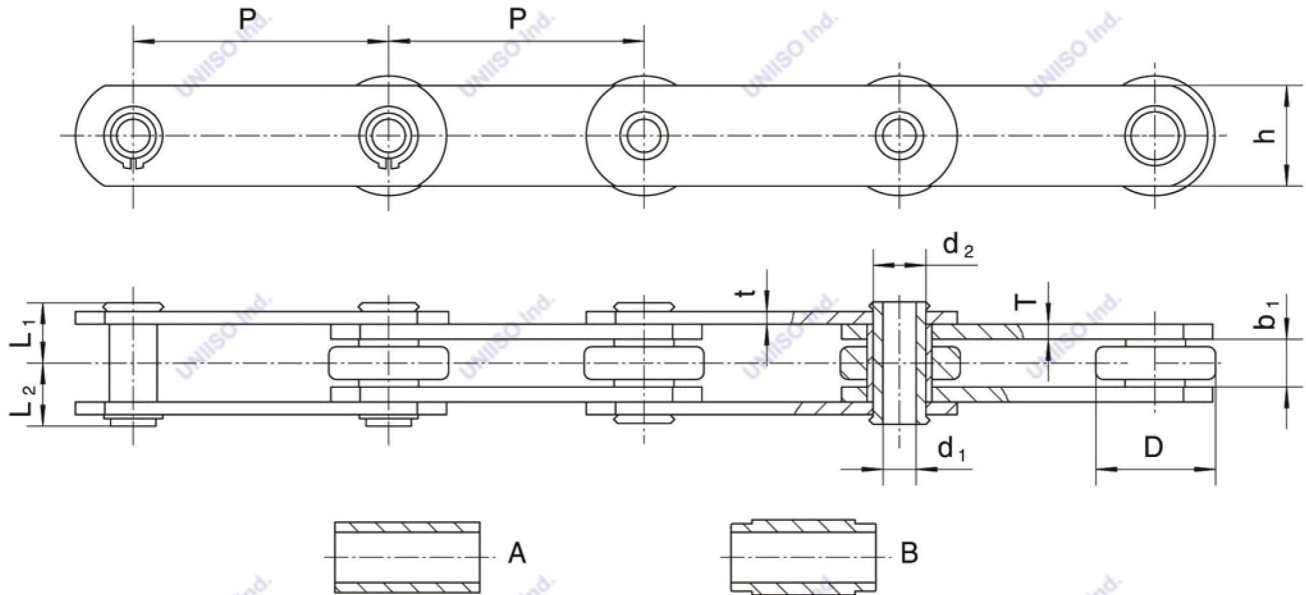


链号	节距	窄端内宽	滚子外径	销轴			链板		最小抗拉强度	每米重量
Chain No	Pitch	Inside Diameter	Roller Diameter	pin			plate		Ultimate Tensile Strength	Weight Per Meter
	P	b1(min)	D(max)	d	L1	L2	h	T	Fu(min)	q
	mm	mm	mm	mm	mm	mm	mm	mm	KN	Kg/m
B5029	66.17	28	22.23	11.1	31.7	35.1	28.6	6.4	122.8	5.41
B5234	152.4	34.9	76.2	22.3	43.9	53.4	50.8	9.5	355.6	17.93



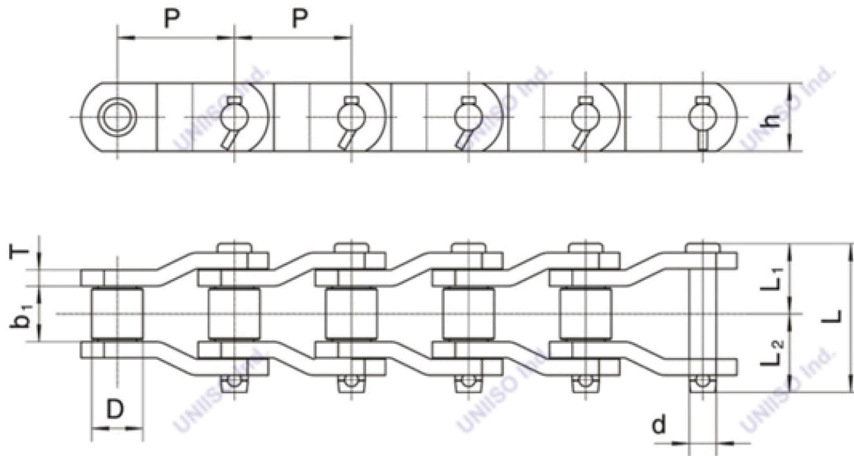
附件号	链号	H	T	B	F	R	d	Type
	Chain No	mm	mm	mm	mm	mm	mm	
AS ₁	B5234	/	15	76.2	66.7	25.4	20.64	A
	B5029	20.7	6.4	33.08	48.4	15.875	10	B

Hollow Pin Palm Oil Chain



链号	节距	内节内宽	滚子外径	销轴					链板		最小抗拉强度	每米重量			
Chain No	Pitch	Width Between Inner Plates	Roller Diameter	Pin					Plate		Ultimate Tensile Strength	Weight Per Meter			
				P	b1(min)	D(max)	d1	d2	L1	L2	Type	h	t/T	Fu(min)	q
				mm	mm	mm	mm	mm	mm	Mm		mm	mm	KN	Kg/m
4 × 15000HP	101.6	18.9	47.63	13.1	19.05	24.2	24.8	A	40	5/6	66.7	6.92			
4 × 21000HP	101.6	19.05	47.63	13.1	19.05	23	24	B	39.4	5.1	95	6.56			
RF4 × 21000HP	101.6	19.05	47.63	13.2	19.05	23.05	29.45	B	39.4	5.1	95	6.52			
4 × 30000HP	101.6	25.4	66.7	19.56	25.8	28.8	29.4	B	50.8	5.1/7.1	200	12.723			
6 × 35000HP	152.4	25.4	66.7	20.1	25.8	27.7	28.3	B	50.8	5.1/6	177.8	9.52			
6 × 36000HP	152.4	25.4	66.7	20.1	26.9	28.8	29.4	B	50.8	5.1/7.1	200	10.1			
IK6 × 36000HP	152.4	25.4	66.7	20.1	26.9	29.3	31.6	B	60.8	7.1/7.1	200	11			
RF6 × 36000HP	152.4	25.4	66.7	20.1	26.9	29.4	30	A	50.8	6.4/6.4	200	10.35			
6 × 36000HHP	152.4	25.4	66.7	20.1	26.9	30.8	31.6	B	50.8	6.4/7.8	220	11.06			
6 × 50000HP	152.4	25.4	66.7	20.24	26.9	31	31.8	B	50.8	6.4/8	220	11.1			
6 × 65000HP	152.4	25.4	66.7	20.24	28	32.6	33.4	B	50.8	8	288.9	11.763			
8 × 45000HP	203.2	38.1	88.9	22.85	30	40	44.2	A	61	8	280	17.27			

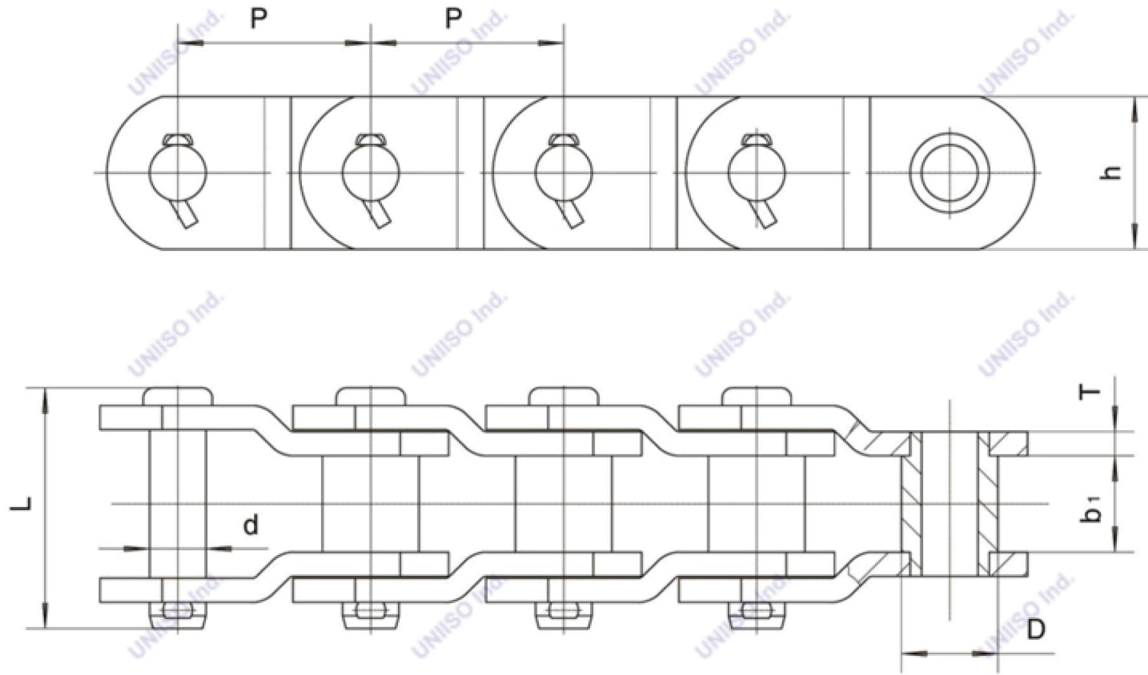
Heavy Duty Cranked Roller Chain



Properties
 TH Thru-Hardenened
 CARB Carburized
 SIH electively Induction
 Hardened

链号	节距	窄端内宽	滚子外径		链板		销轴			最小抗拉强度	每米净重										
Chain No.	Pitch	Inside width at narrow end	Roller		Sidebars		Pin			Ultimate tensile strength	Weight Per meter										
										P	b 1(min)	D(max)	Propert-ies	h	T	d	L1	L2	Propert-ies	Q(min)	q
										mm	mm	mm		mm	mm	mm	mm	mm		kN	kg/m
EXS2065	50.8	31.75	28.7		41.4	7.9	14.99	38.4	42.9		288.9	11.3									
UN2010	63.5	37.9	31.75	CARB	44.5	8	15.88	41.9	46.2	TH	254	13.1									
MXS882	66.27	28.7	22.1		28.7	6.4	11.18	32.8	36.3		124.5	5.36									
UN3067	77.9	39	41.4	TH	50.8	9.5	19.05	46.1	53.5	TH	300	17.9									
UN1568	77.9	38.61	41.27	TH	57.2	9.5	19.05	46.1	52.5	SIH	360	20.2									
API3P	78.1	37.5	31.75	TH	39.6	9.5	16.5	45.5	50.9	TH	330	12.8									
UN1037	78.1	36.83	31.75	TH	44.45	9.5	16.51	44.9	49.3	TH	270	13.9									
1190EXX	78.1	37.5	31.75	TH	44.45	9.5	16.5	45.5	50.9	TH	330	13.3									
UN1030	78.1	36.83	32	CARB	38.1	8	15.75	41.4	46.8	TH	109	10.4									
E238R	88.9	36.83	44.45	TH	57.2	12.7	22.23	52.65	54.65	SIH	666.75	22.9									
UN2814	88.9	38.1	44.45	TH	60.5	12.7	22.23	53.6	62	TH	516	25.3									
1664A	101.6	56.06	57.15		82.55	14.2	30.18	65.2	75		1111	42.55									
UN6214	101.6	68.66	57.15	TH	69.85	12.7	31.55	68	76.9	SIH	480	37.6									
API4P	103.2	50.8	44.45	TH	57.2	12.7	22.23	60.2	67.5	TH	666.8	23.8									
UN1240	103.2	48	44.45	TH	50.8	12.7	22.1	58.1	65.9	SIH	209	21.4									
UN1244	103.2	48	44.45	TH	54	12.7	22.1	58.1	67.5	SIH	400	22.4									
E4073	103.45	48.8	45.21	TH	60.3	14.3	25.4	62.8	70.3	TH	755.7	27.8									
UN1245	103.45	47.63	45.23	SIH	60.3	14.3	23.8	62.9	71.4	TH	560	28.4									
UN3315				TH																	
UN4522	114.3	52.3	57.15	TH	79.2	14.3	27.94	63.8	72.2	TH	760	38.1									
UN635	114.3	50.8	57.15	TH	76.2	14.3	27.94	62.6	71.7	SIH	740	37.4									
UN4523	118.11	52.3	57.15	TH	82.6	16	27.94	67.2	75.6	TH	850	41.9									
1605AAA	127	65	63.5		88.9	19.05	34.93	80.1	89.5		1466	59.2									
EXS5027	127	69.4	63.5	TH	88.9	15.9	31.75	78.5	84.5	TH	1156	51.3									
UN1207	127	68.25	63.5	TH	88.9	15.9	31.55	74.1	78.1	SIH	990	51.18									
EXS6042	152.4	77.8	76.2		101.6	19.05	38.1	86.5	98.6		1866	69.03									
UN4824	152.4	74.6	76.2	TH	101.6	19.05	37.9	85.2	97	SIH	1400	69.1									

Heavy Duty Cranked Roller Chain

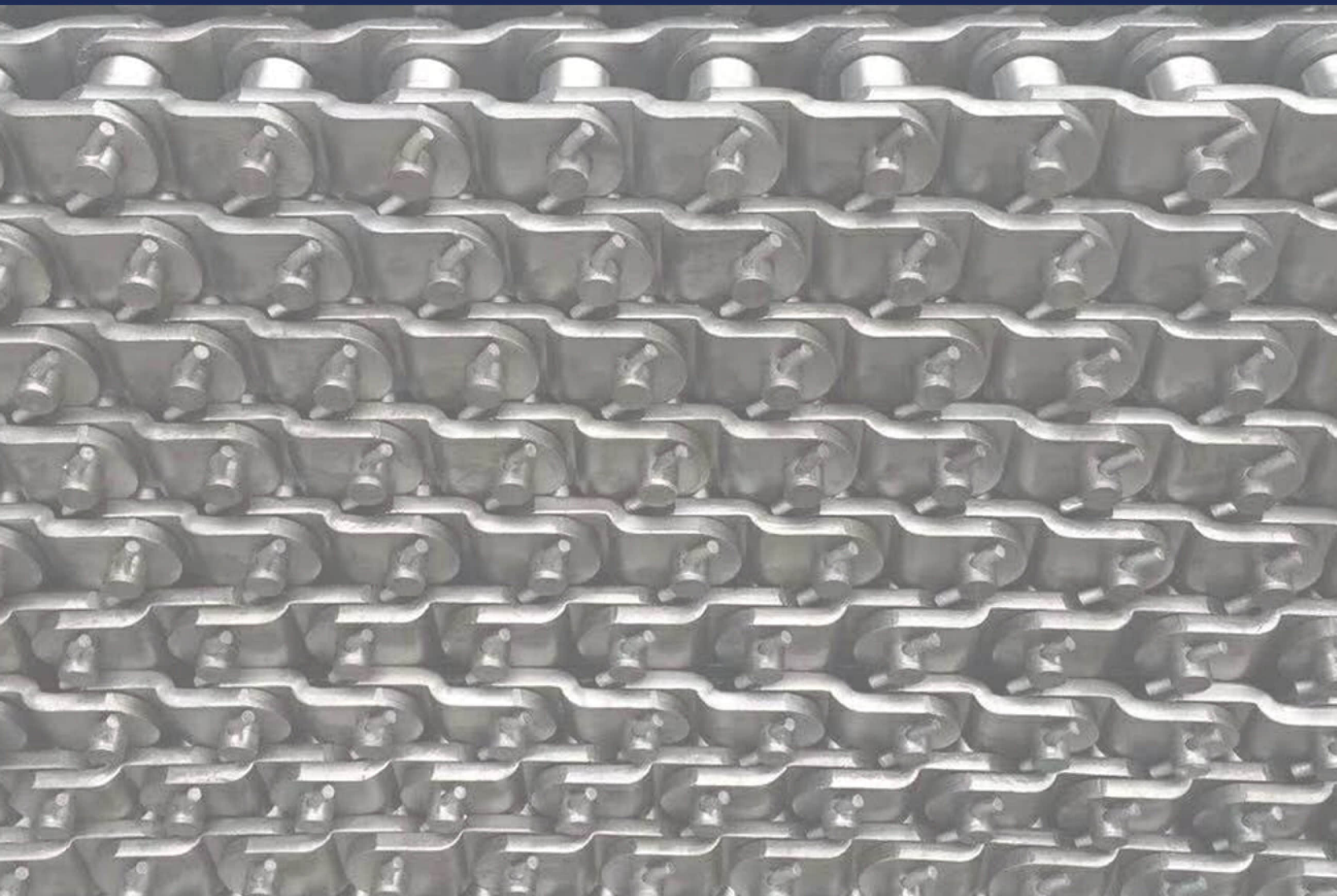


链号	节距	窄端内宽	滚子或套筒外径	链板		销轴			最小抗拉强度	每米净重
Chain No.	Pitch	Inside width at narrow end	Roller or bush	Sidebars		Pin			Ultimate tensile strength	Weight Per meter
	P	b1(min)	D(max)	h	T	d	L1	L2	Q(min)	q
	mm	mm	mm	mm	mm	mm	mm	mm	kN	kg/m
UN6065	152.4	75.8	76.2	120.7	19.05	44.45	88.1	96.1	1970	81.25
UN6060	152.4	101	88.9	114.3	22	47.63	108.65	120.65	1700	102
UN850	152.4	57.15	50.8	82.6	16	33.27	157	634.7	45.3	36.6
UN6066	152.4	75.8	76.2	120.7	19.05	44.45	184	1778	124.5	81.3
UN886	177.8	68.33	66.68	101.6	19.05	41.07	172.2	1300	84.5	60.2

※ 链条为滚子弯板链，其余为套筒弯板链。

※ The chain is roller cranked-link chain, the others are bush cranked-link chains.

UNIISOTM
POWER TO THE WORLD



Shanghai UNIISO Industries Co.,Ltd.

Add: No.5699, Hangnan Rd. Fengpu Industrial Park

Fengxian Dist. Shanghai City, P.R.China.

Tel:+8617317253554

Email: sales@uniisoindustries.com

www.uniisoindustries.com

