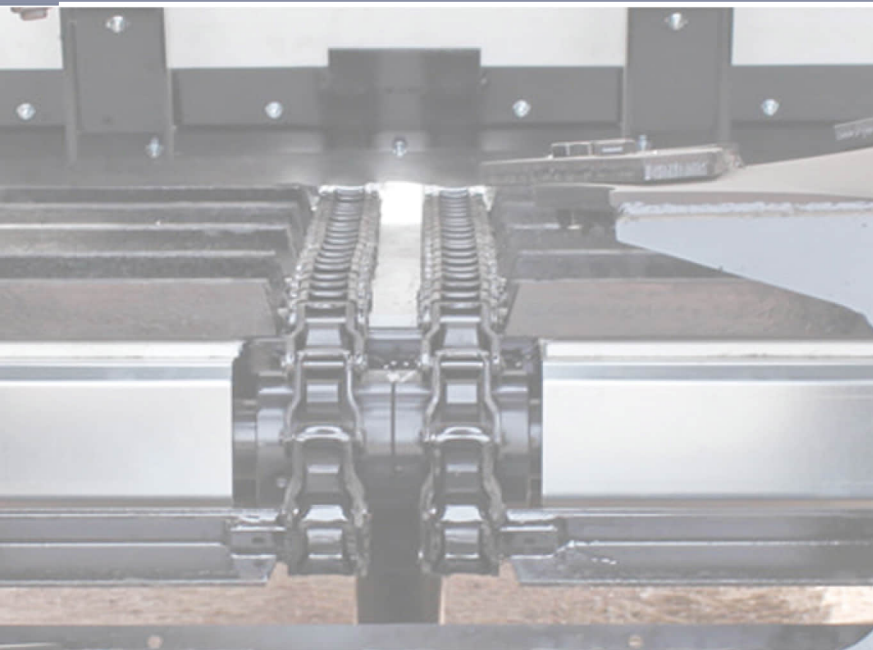


UNIISOTM
POWER TO THE WORLD



STEEL PINTLE CHAIN

www.uniisoindustries.com

UNIISO Industries Co.,Ltd. was founded in 1987, has accumulated over 30 years' chain design, manufacture technology and experience in forging chain, casting chain,punching chain. the company covers an area of 50000 square meters.

Our main products including: sugar mill chain,palm oil chain, cement chain,sewage processing chain,asphalt mixing chain,paver chain,pintle chain,agricultural chain,forging chain, casting chain, enginnering chain. welded chain, all chains standard we are conform to ISO.ANSI,DIN,BS&JIS. UNIISO adopt the most advanced technology from Japan and Germany basis on own innovation to producing safe,reliable and excellence performance.

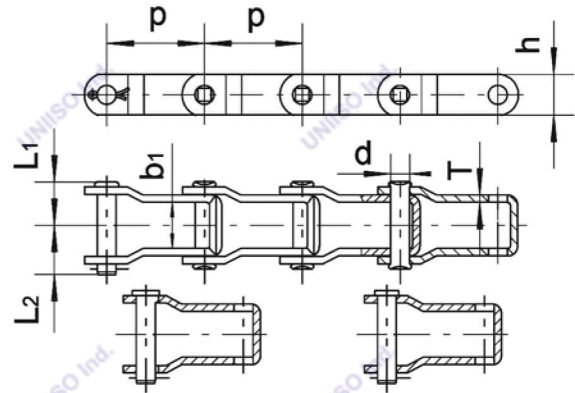
Choosing UNIISO, we will extend the lifespan in your production line and devices.

if you wanna know more about us, pls visit our website:

www.uniisoindustries.com



Steel Pintle Chains -Attachments



Tear Drop Type CL

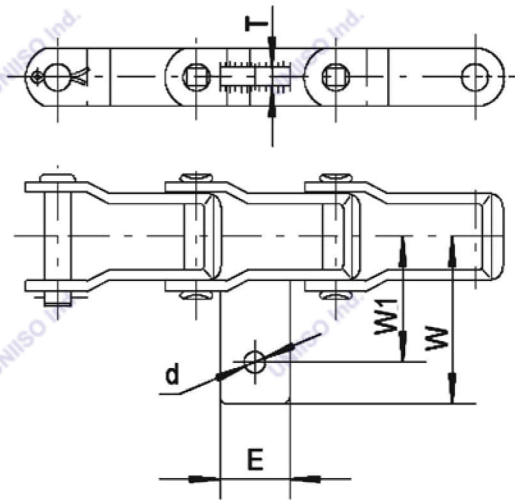
Ordinary Type CL

链号 Chain No.	节距 Pitch	每 10FT 节数 Links per 10FT	每英尺 净重 Weight per FT	最小抗拉 强度 Ultimate Tensile strength	平均拉 伸强度 Average tensile strength	最大允许工 作载荷 Maximum recommen ded working load	窄端 内宽 Inside width at narrow end	销轴 Pin			链板 Plate							
								P	q	Q(min)	QkN	kN	b1	d	L1	L2	h	T
D205	31.75	96	0.186	18	21.8	2.5	9.53	5.08	10.7	13.5	11.9	2.1						
	1.25		0.41	4,050	4,900	560	0.375	0.2	0.421	0.543	0.469	0.083						
662	42.27	72	0.506	42.5	49.8	7.6	23.2	7.16	20.75	22.95	18.3	3.20						
	1.664		1.12	9,560	11,200	1,710	0.913	0.282	0.817	0.904	0.72	0.126						
662H	42.27	72	0.622	48.9	52	7.8	23.2	7.16	21.45	23.85	20.4	3.6						
	1.664		1.37	11,000	11,700	1,755	0.913	0.282	0.844	0.939	0.803	0.142						
662HD	42.27	72	0.812	60	65.8	9.3	23.2	7.92	22.75	25.45	22.23	4.3						
	1.664		1.79	13,500	14,800	2,090	0.913	0.312	0.896	1.002	0.87	0.17						
667X	57.15	53	0.887	88.9	96.5	13.4	27	11.1	25	29.3	23.8	4.3						
	2.25		1.95	20,000	21,700	3,010	1.063	0.437	0.984	1.154	0.937	0.17						
667XH	57.15	53	1.314	124.5	138	21.4	27.8	11.91	29.05	32.25	26.8	5.7						
	2.25		2.89	28,000	31,050	4,810	1.094	0.469	1.144	1.27	1.055	0.224						
667K	57.15	53	1.159	106.8	132	17.78	27.8	11.1	27.75	30.85	26.8	5.1						
	2.25		2.55	24,000	29,700	4,000	1.094	0.437	1.093	1.215	1.055	0.20						
667KC	57.15	53	1.16	137.35	148	21.33	27.8	11.1	27.75	30.85	26.8	5.1						
	2.25		2.56	30,900	33,290	4,800	1.094	0.437	1.093	1.215	1.055	0.20						
667H	58.75	52	0.564	52.1	57.4	8.5	25.6	7.92	21.85	24.25	22.23	3.2						
	2.313		1.24	11,720	12,900	1,910	1.008	0.312	0.86	0.955	0.875	0.126						
667J	57.15	53	0.854	86.5	95	13.1	27	9.52	25	29.3	23.8	4.3						
	2.313		1.88	19,460	21,370	2,950	1.063	0.375	0.984	1.154	0.937	0.17						
88K	66.27	46	1.098	106.8	132	17.8	27.8	11.1	27.75	30.85	26.8	5.1						
	2.609		2.41	24,000	29,700	4,000	1.094	0.437	1.093	1.215	1.055	0.20						
88C	66.27	46	1.601	152	169	26.7	31.75	12.7	32.65	35.65	28.58	6.4						
	2.609		3.53	34,200	38,020	6,000	1.25	0.5	1.285	1.404	1.125	0.25						
308C	78.1	39	2.54	200	222	35.6	32.5	15.88	38.25	41.75	38.1	8						
	3.075		5.59	45,000	50,000	8,000	1.28	0.625	1.506	1.644	1.5	0.315						

Steel Pintle Chains -Attachments

Att No	Chain No	W1	W	d	E	T
AS	662	34.93	48.4	7.14	23.83	4.5
	667H	51.6	66.68	8.71	28.58	6.4
	667X	51.6	68.66	8.71	28.58	8
	667XH	51.6	69.85	9.9	31.8	9.5
	667K	51.6	71.42	10.31	31.75	9.5
	88K	51.6	71.42	10.31	31.75	9.5
ASS	88C	69.85	93.73	11.1	38.1	9.5
	662	34.93	48.4	8.71	23.83	4.5
	667H	51.6	66.68	10.31	28.58	6.4
	667X	51.6	68.66	10.31	28.58	8
	667K	34.93	71.42	11.89	31.75	9.5
AS2	88K	51.6	71.42	11.89	31.75	9.5
	667H	51.6	65.89	11.89	31.75	6.4
	667X 667XC	51.6	68.66	11.89	31.75	8

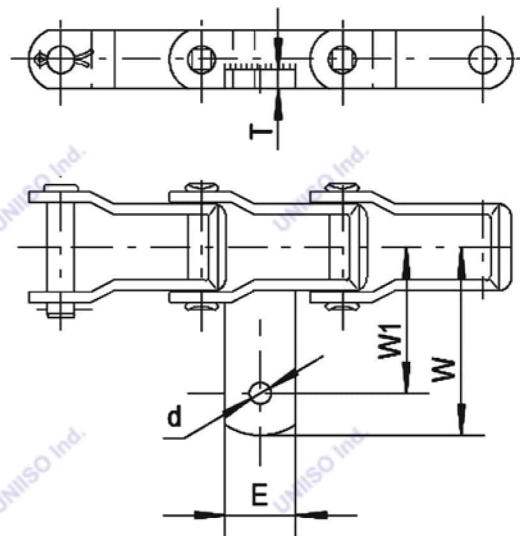
AS ASS AS2



The attachment is also applicable to bilateral belt ,
it corresponding names are KS,KSS,KS2.

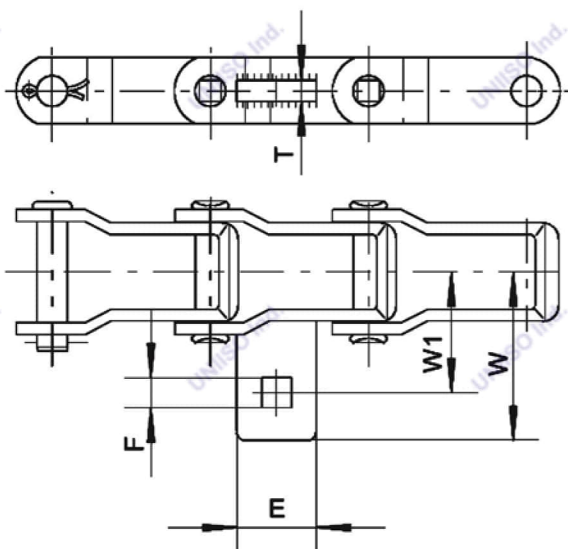
Att No	Chain No	W1	W	d	E	T
ASW	667K 667KC	69.85	84.12	9.52	31.75	6.4

ASW



The attachment is also applicable to bilateral belt ,
it corresponding name is KSW.

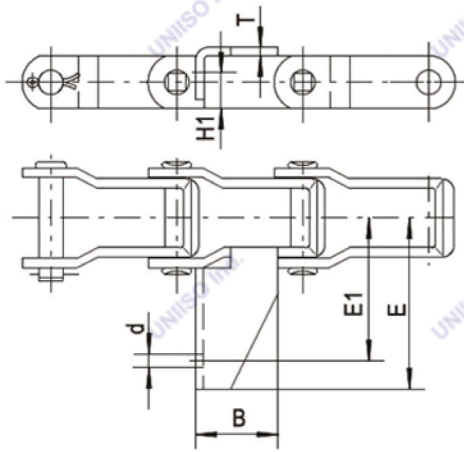
SAS



Att No	Chain No	W1	W	E	F	T
SAS	667X	43.5	60	28.5	9.9	6.4
	667XA	43.5	60	28.5	8.3	6.4

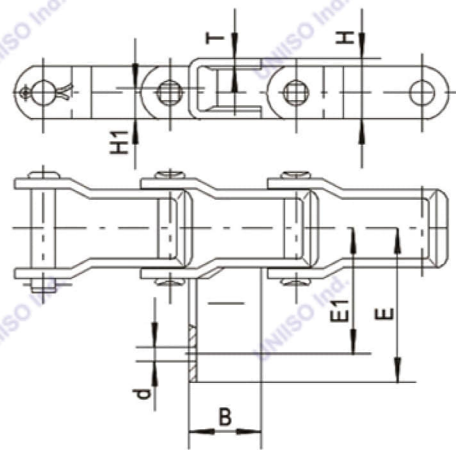
Steel Pintle Chains -Attachments

G37 G37S G38



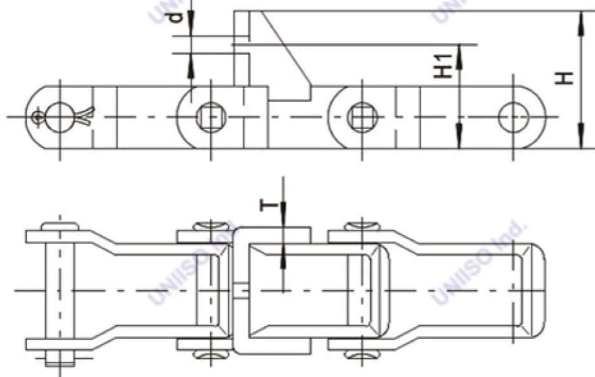
Att No	Chain No	E1	E	B	d	H1	T
G37	662	49.23	59.54	28.58	5.54	11.91	3.1
G37S	662	49.23	59.54	28.58	5.54	11.91	3.1
G38	662	49.213	59.54	28.58	8.71	11.91	3.1

G50



Att No	Chain No	E1	E	d	B	H1	H	T
G50	662	39.67	54.76	10.31	25.4	11.13	22.23	3.4
	667H	41.28	55.58	10.31	25.4	11.13	22.23	3.4
	662HD	50	65.5	9.92	25.4	11.15	22.23	3.8

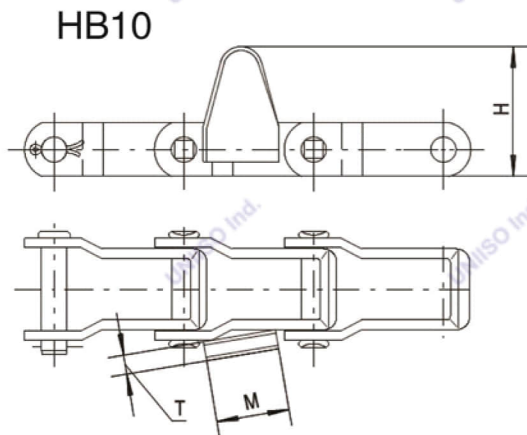
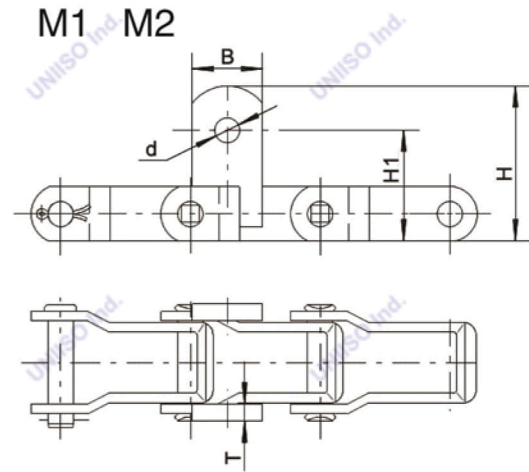
C1 C11



Att No	Chain No	H1	H	d	T
C1	662	32.54	45.24	7.14	2.7
	667X	38.1	49.2	7.14	4.8
C11	662	32.54	45.24	8.71	2.7

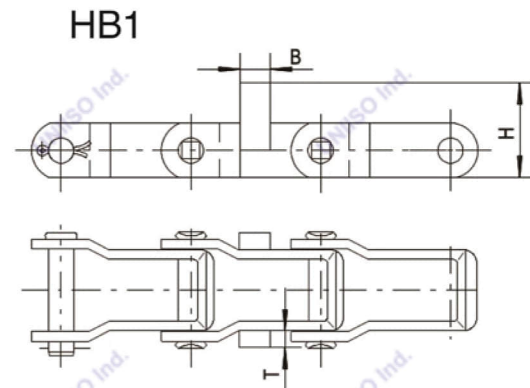
Steel Pintle Chains -Attachments

Att No	Chain No	H1	H	B	d	T
M1	88K	64.3	78.6	38.1	15.9	5.1
	667X	57.94	80.16	38.1	22.23	8
M2	88K	61.1	83.34	38.1	22.23	8
	308C	72.21	94.44	38.1	22.23	8

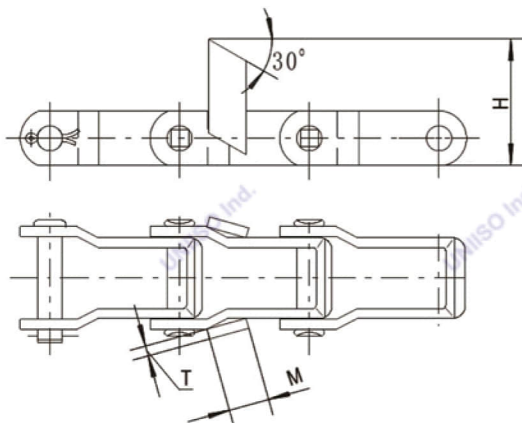


Att No	Chain No	H	M	T
HB10	662	43.26	25.4	4.8

Att No	Chain No	B	H	T
HB1	667X	12.7	25.4	6.4



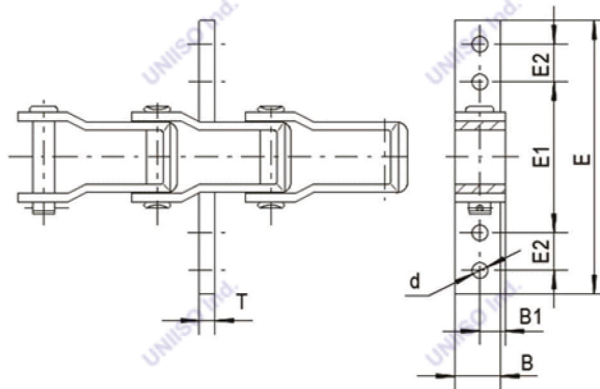
HB4 HB4S



Att No	Chain No	M	T	H
HB4	662	18.3	3.2	59.54
	667H	18.3	3.2	63.5
	667X	18.3	3.2	57.15
HB4S	662	19.15	3.1	44.45

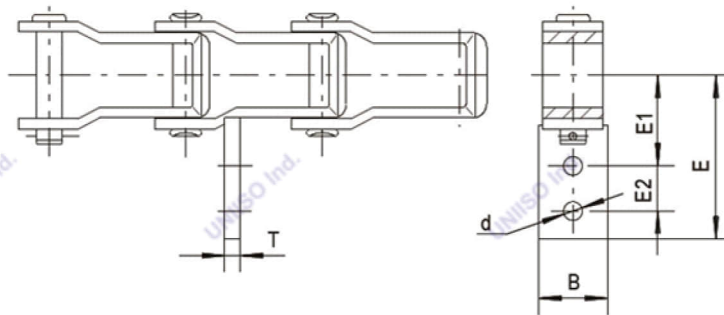
Steel Pintle Chains -Attachments

FS7 FS15



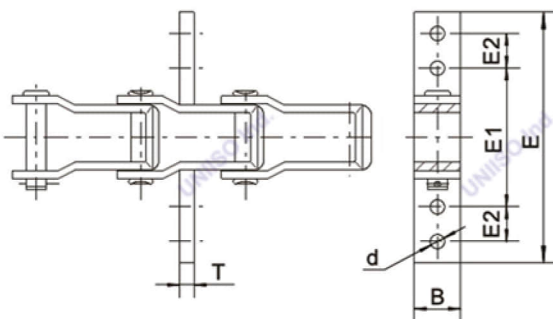
Att No	Chain No	E1	E2	E	B1	B	d	T
FS7	667H	76.2	31.75	177.8	12.7	19.05	10.31	9.53
	667X	76.2	31.75	177.8	15.875	19.05	10.31	9.53
FS15	88K	96.52	76.2	299.72	13.49	25.4	8.71	6.4

G2 G9



Att No	Chain No	E1	E2	E	B	d	T
G2	88K	57.15	19.05	88.9	25.4	9.53	6.4
	88C	57.15	19.05	88.9	25.4	9.53	6.4
G9	88C	55.55	34.93	114.3	38.1	8.71	9.5

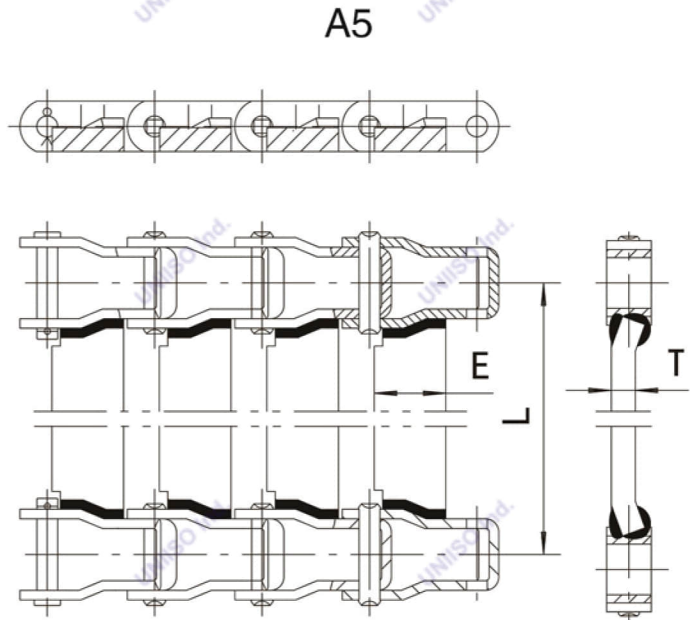
SF22



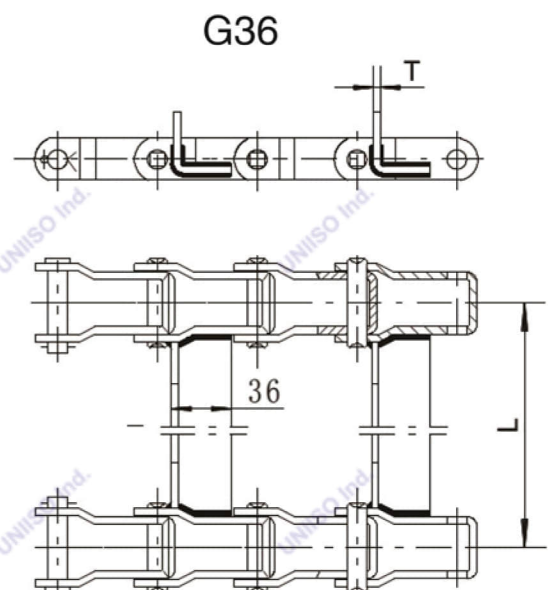
Att No	Chain No	E1	E2	E	B	d	T
SF22	667K	108	63.5	273	25.4	10.31	9.5
	667KC	108	63.5	273	25.4	10.31	9.5
	88C	127	50.8	254	28.6	8.3	8

Steel Pintle Chains -Attachments

Att No	Chain No	L	E	T
A5	662	247.65	19.05	6.4
		263.53	19.05	6.4
		258.78	19.05	6.4
		357.2	19.05	6.4
		266.7	25.4	6.4
		266.7	25.4	4.8
		327.03	19.05	6.4
		311.15	19.05	4.8
	667X	539.75	38.1	6.4
	667X	515.137	38.1	6.4
	667X	533.4	31.75	9.5
	667XSS	410	38.1	6.4
	667K	536.7	38.1	8.5
		536.7	38.1	9.65
		638.3	38.1	12.7
	667XH	758.95	38.1	12.7
510		30	6	
667H	326.92	38.1	6.4	
	361.95	25.4	6.4	
	324.637	25.4	6.4	

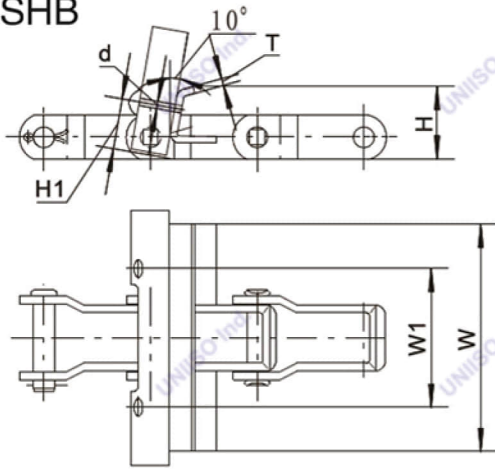


Att No	Chain No	L	T
G36	667X	930.3	5
	667H	930.3	5

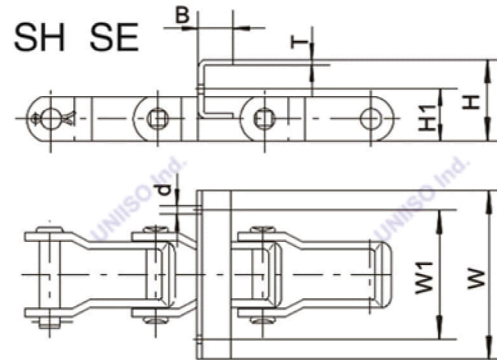


Steel Pintle Chains -Attachments

SHB

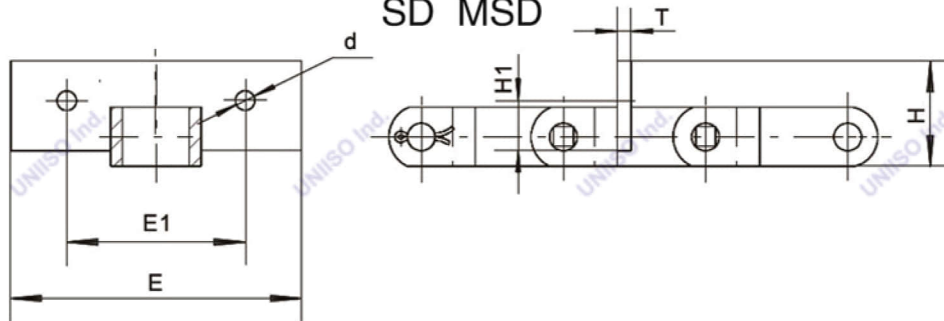


Att No	Chain No	H1	H	W1	W	d	T
SHB	662	22.23	38.1	63.5	133.35	7.14	3.1



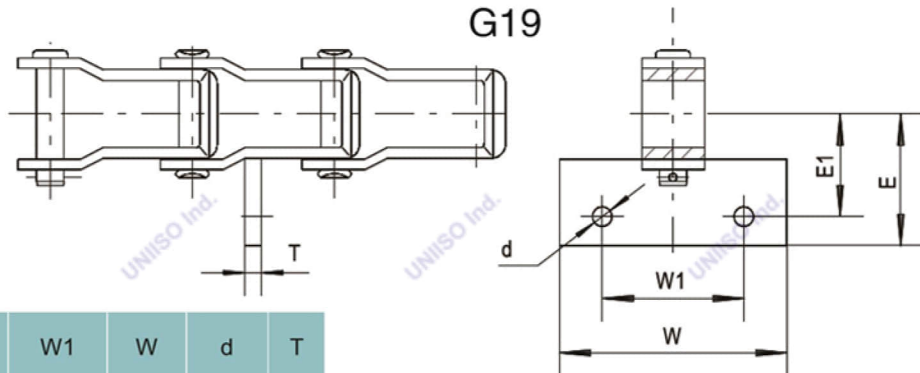
Att No	Chain No	H1	H	B	T	W1	W	d
SH	662	25.4	39.67	15.875	3.1	79.38	101.6	7.14
	667H	30.18	44.45	15.875	3.1	79.38	101.6	7.14
SE	662	25.4	39.67	15.875	3.1	79.38	101.6	8.71
	667H	30.18	44.45	15.875	3.1	79.38	101.6	8.71

SD MSD



Att No	Chain No	E1	E	d	H1	H	T
SD	667H	/	133.4	/	/	38.1	6.4
MSD	662	63.5	82.6	7.14	19.8	34.14	3.4

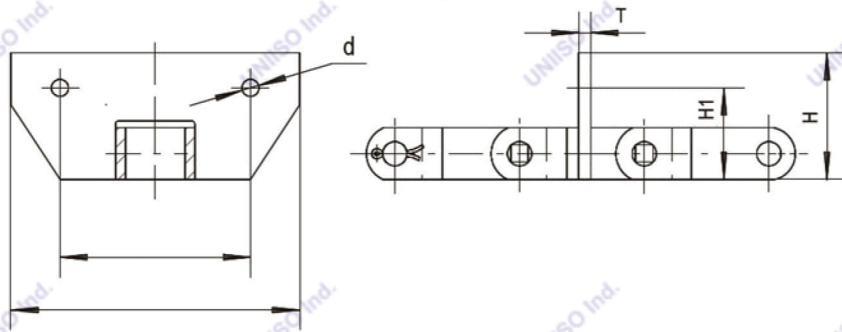
G19



Att No	Chain No	E1	E	W1	W	d	T
G19	88K	57.15	69.85	66.68	88.9	10.31	6.4

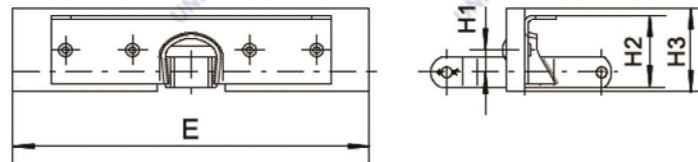
Steel Pintle Chains -Attachments

FS



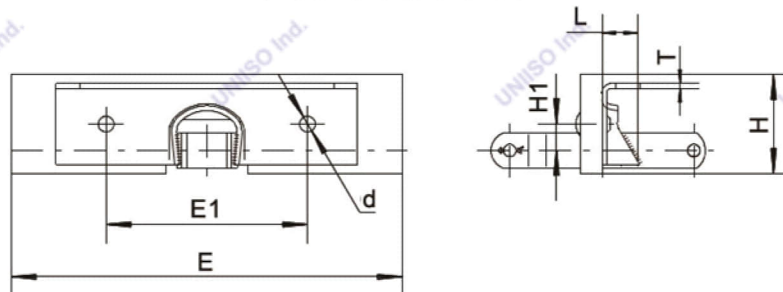
Att No	Chain No	H1	H	T	d	E1	E
FS	667X 667XC	36.53	47.63	4.8	8.71	76.2	101.6

F12M F12MH



Att No	Chain No	H1	H2	H3	E
F12M	662H	17.8	54	63.5	203.2
	667H	16.9	54	63.5	270
F12MH	667H	16.9	54	63.5	270

F10 F10L F11

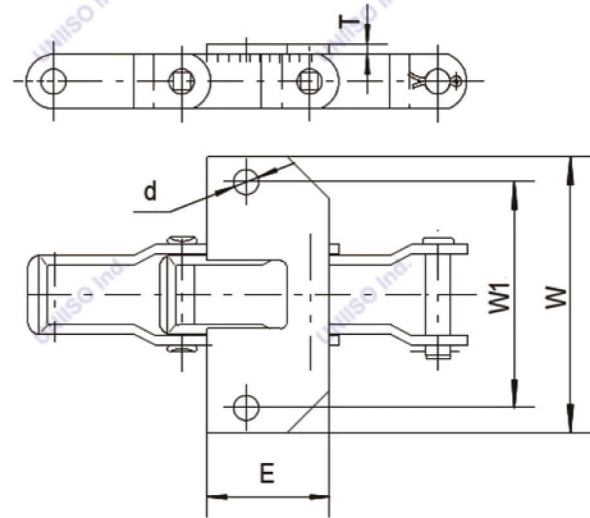


Att No	Chain No	H1	H	T	L	d	E1	E
F10	662	25.4	50	2.7	14.27	8.71	88.9	136.5
	667H	31.75	56.36	2.7	15.875	8.71	88.9	136.5
F10L	667H	31.75	50	2.7	22.23	8.71	88.9	136.5
F11	662	25.4	50	2.7	14.27	8.71	88.9	187.3
	667H	31.75	56.36	2.7	15.875	8.71	88.9	187.3

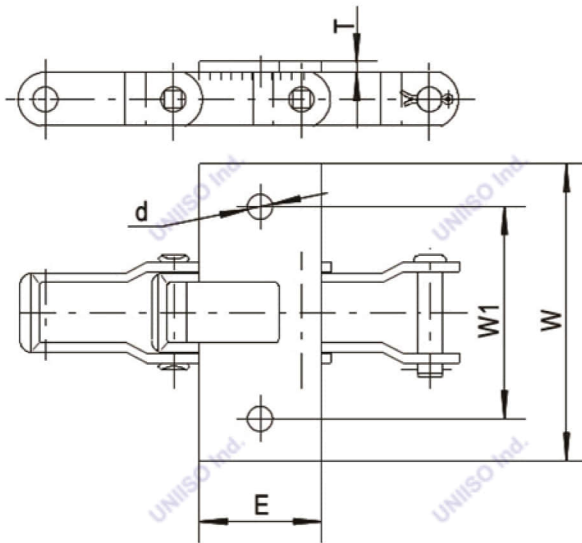
Steel Pintle Chains -Attachments

Att No	Chain No	W1	W	E	d	T
AK1	662	74.63	88.9	35	7.14	3.05
K1	662	62.71	82.55	35	7.14	3.1
	667H	62.71	82.55	35	7.14	3.1
	667X	62.71	82.55	35	7.14	3.1
	88K	95.25	127	35	11	3.2
K19	662	50.8	71.42	35	7.14	3.1

AK1 K1 K19

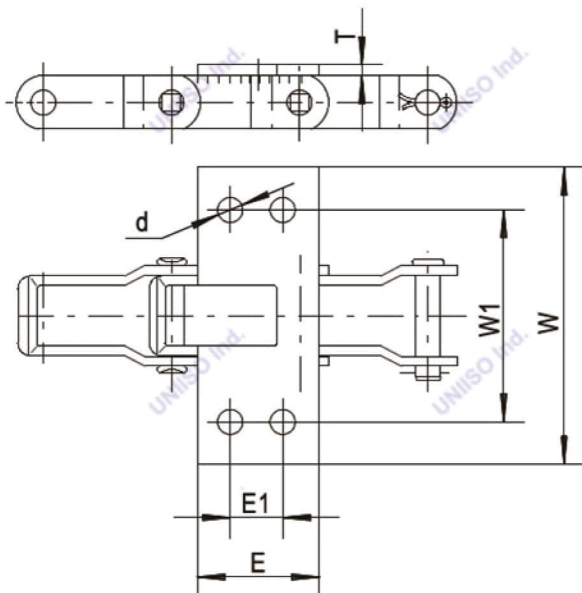


K1C K1M K1P



Att No	Chain No	W1	W	E	d	T
K1C	88K	95.3	127	47.63	10.31	4.8
K1M	88K	101.6	127	47.63	9.92	4.8
K1P	88K	96.84	127	47.63	8.3	4.8

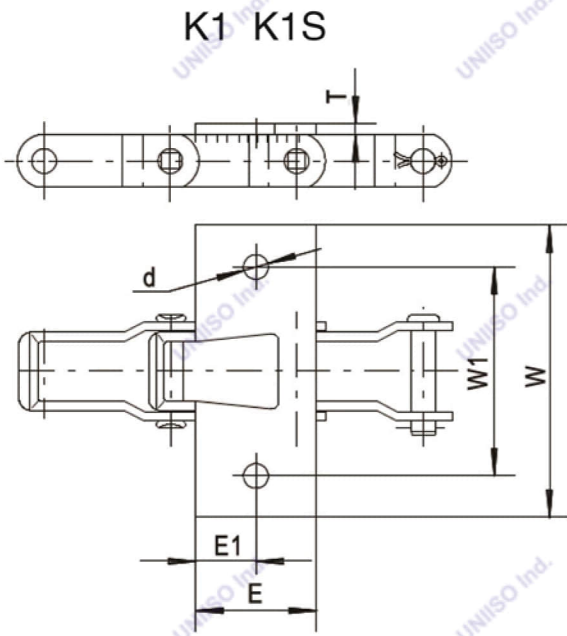
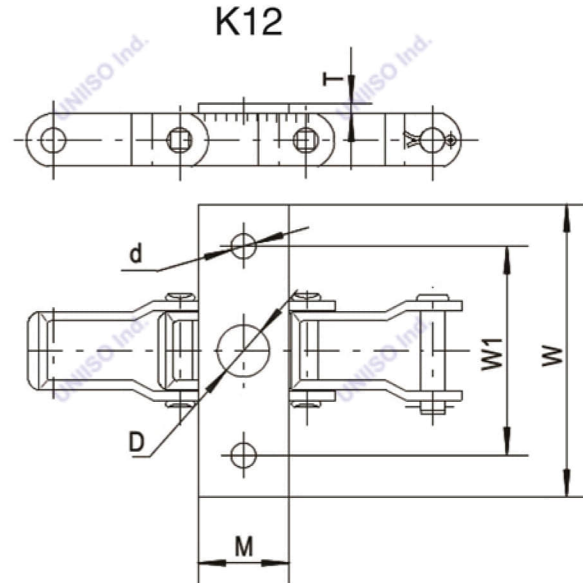
K2C K2M K2P



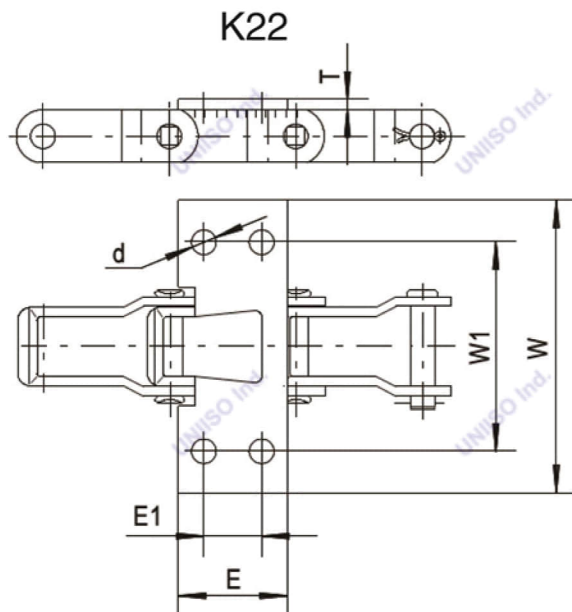
Att No	Chain No	W1	W	E1	E	d	T
K2C	88K	106.4	127	31.75	57.15	8.71	4.8
K2M	88K	101.6	127	28.58	57.15	10.31	4.8
K2P	88K	92.08	127	31.75	57.15	8.71	4.8

Steel Pintle Chains -Attachments

Att No	Chain No	W1	W	M	d	D	T
K12	667X	65.09	101.6	38.1	9.9	26.2	4.6



Att No	Chain No	W1	W	E1	E	d	T
K1	88C	101.6	127	25.4	47.63	10.31	4.8
K1S	88C	95.25	127	25.4	47.63	11.5	6.4



Att No	Chain No	W1	W	E1	E	d	T
K22	88C	135	158.8	44.45	69.85	9.9	6.4

UNIISO™

POWER TO THE WORLD



Shanghai UNIISO Industries Co.,Ltd.

Add: No.5699, Hangnan Rd. Fengpu Industrial Park

Fengxian Dist. Shanghai City, P.R.China.

Tel:+8617317253554

Email: sales@uniisoindustries.com

www.uniisoindustries.com

