

UNIISOTM
POWER TO THE WORLD



WELDED STEEL CHAIN

www.uniisoindustries.com

UNIISO Welded Chains

Based on years of experience and learning, **UNIISO** Welded Steel Chain has accumulated unique professional knowledge, by using the high quality material, the best manufacturing process, the optimal heat treatment and design to make chains, which can provide superior strength and durability. Extending wear life and reducing downtime in harsh, demanding environments will bring you outstanding value and higher production efficiency.

Superior Chain Strength

One key factor for the durability of welded steel chain is superior fatigue strength. **UNIISO** Chain accurately design and strictly control the interference fit between pin and plate hole, which the reasonable interference fit can create a favorable residual stress thereby increasing the chain fatigue strength. The best punching process can ensure the plate pitch hole with high surface roughness and the vertical stressed area of hole can reach over 80%, which can further protect the completeness of interference fit.

Another key factor for the durability of welded steel chain is strong welding, stress relief and heat treatment. Improper production process and inaccurate control can cause welding melt through or over region hardness leading to brittle fracture. **UNIISO** Chain has adopted the latest technology in process and quality control to ensure high quality welding strength and reliability.

Superior Chain Wear Life

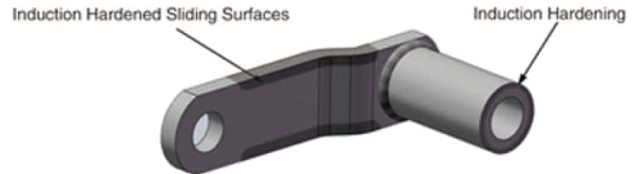
Chain wear life is directly affected by the hardness of its components, which the harder the components, the longer the wear life. **UNIISO** Chain uses the most advanced induction heat treatment facilities computer-controlled multi-purpose furnace and automatic mesh belt furnace to achieve precision tolerances and the hardest wear surface, meanwhile also to ensure enough toughness to resist chain over higher impact load.

The picture has showed a cross section of one induction hardening chain pin.



Maximizing Chain Wear Life

Based on customers' different operating requirements, **UNIISO** Chain can design different heat treatment options to further extend wear life and improve facilities' production efficiency. If your facilities working environments are harsher, more demanding, more punishing, the chains are frequently replaced because of the quick wear of chain plate and bush, you should choose the chain heat treated as showed in the picture. The two sides of plate and the excircle of bush surface induction hardening, it is a very cost-effectiveness solution to improve your chain working life.



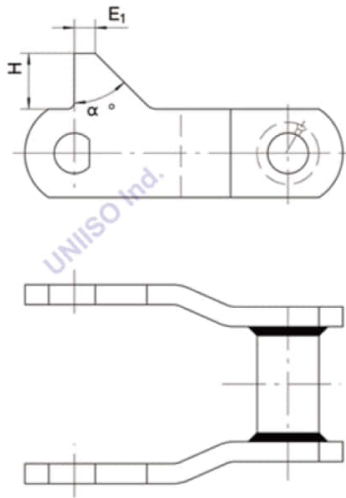
If your chain is working under strong corrosive environment, in order to extend wear life, **UNIISO** Chain can provide you with various types of stainless steel material options, like 304SS, 420SS, 17-4PHSS (630SS).

UNIISO Welded Steel Chain is widely used in forestry, saw mill, cereal convey and paper mill, Shanghai **UNIISO** is eager to work together with you. You sagacious choose **UNIISO** Chain, you are exactly choosing the value, choosing the happiness !



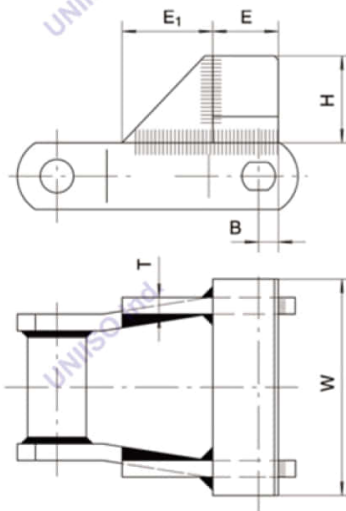
Attachments of Narrow Series Welded Crank Link Mill chains

RR2



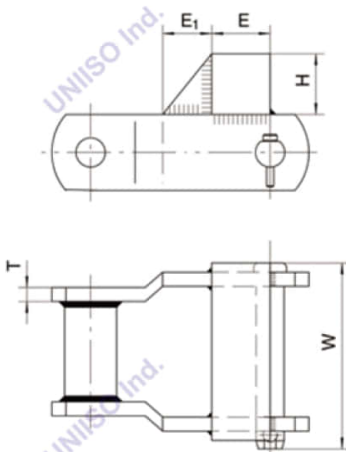
链号 Chain No.	E ₁ mm	H mm	α mm
RR2			
WHX155	15	40	45
WH150	8	25.5	45

RFA



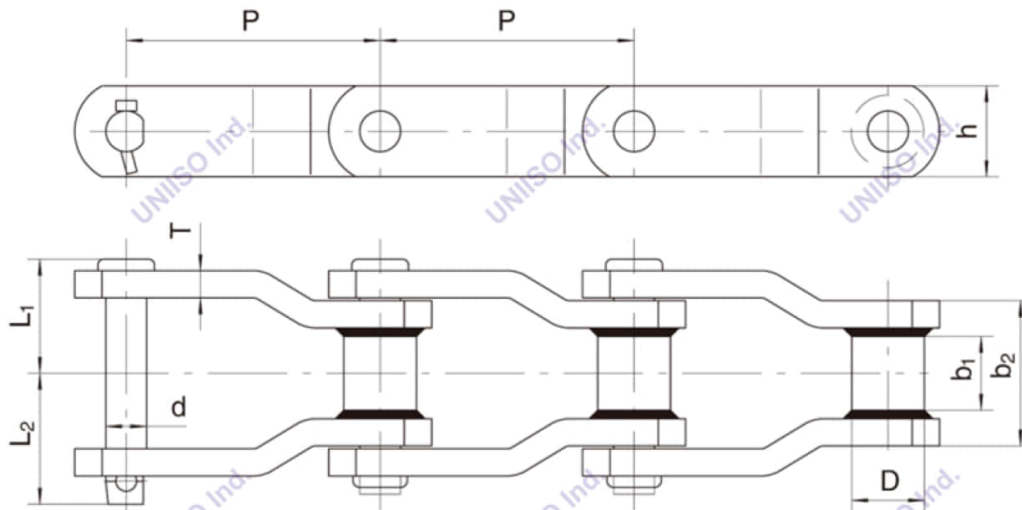
链号 Chain No.	B mm	E mm	E ₁ mm	H mm	T mm	W mm
RFA						
WH132	15	50	69	66.2	12	165
WHX155	18	50	42	52	12	152

RFB



链号 Chain No.	E mm	E ₁ mm	H mm	T mm	W mm
RFB					
FWHX150	50	42	52	12	152
WH124	40	30	40	6	90

Narrow Series Wekded Crank Link Mill chains

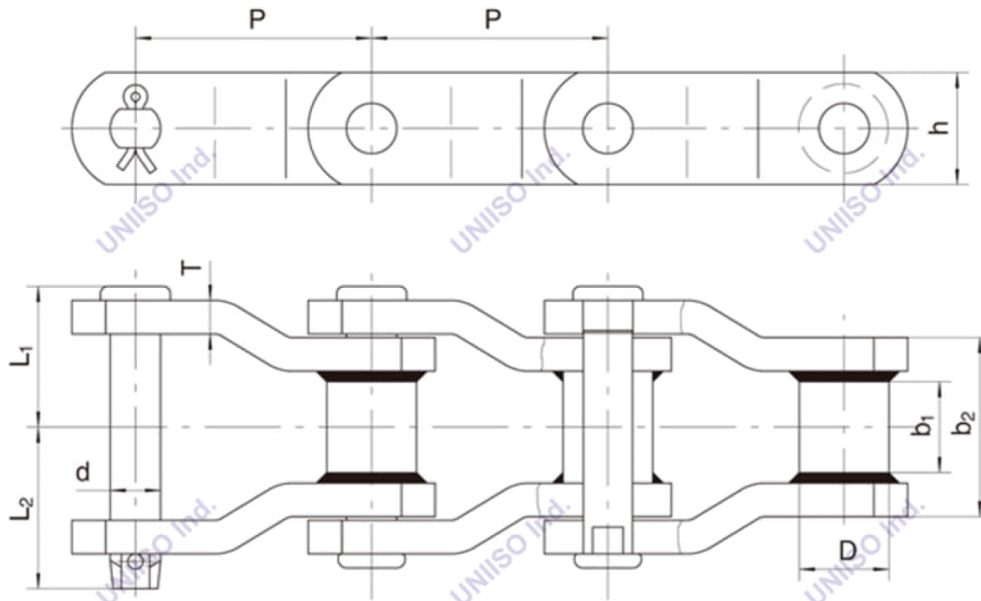


链号 Chain No.	节距 Pitch	窄端 Narrow end		套筒外径 Bush diameter	链板 Sidebars		销轴 Pin			最小抗拉强度 Ultimate tensile strength	许用工作载荷 Rated working load	每米重量 Weight per meter
	P mm	b ₁ (min) mm	b ₂ (max) mm	D(max) mm	h mm	T mm	d mm	L ₁ mm	L ₂ mm	Fu (min) kN	kN	q kg/m
WH78	66.27	28.4	51	22.23	28.6	6.4	12.7	36.3	39.5	160	15.6	5.92
WH78B	66.27	28.4	51	27	31.8	6.4	12.7	36.3	39.5	160	15.6	6.98
WH78HD	66.95	25.4	51.2	25.4	31.8	9.5	14.27	40.2	45.3	200	19.6	9.4
WH82	78.1	31.8	57.4	27	31.8	6.4	14.27	40	43.5	200	19.6	7.14
WH82HD	78.1	28.6	60.8	31.75	38.1	9.5	19.05	46.5	50.8	320	32.7	12.7
WH9103HD	78.1	28.6	57.9	31.75	38.1	9.5	18.95	43.5	48.4	320	32.9	11.9
WH124	101.6	38.1	71.5	31.8	38.1	9.5	19.05	52	56	320	32.7	11.5
WH124HD	103.2	38.1	76.3	41.28	50.8	12.7	25.4	59.4	64.3	540	66.8	21.3
WH111	120.9	50.8	85.6	31.8	44.5	9.5	19.05	59.4	63.3	320	39.5	13
WH720	152.4	28.5	55	32	40	10	19.05	44.5	49.5	350	35.8	9.7
WH106	152.4	38.1	71.5	31.8	38.1	9.5	19.05	52	56	320	32.7	9.6
WH110	152.4	44.5	76.5	31.8	38.1	9.5	19.05	54.4	59.6	320	32.7	9.6
WH132HD	153.67	69.85	119.03	44.5	50.8	15.9	25.4	84	89.7	540	69.3	24.8

所有零件经过热处理硬化

All components of chain have been hardened through heat treatment.

Narrow Series Welded Crank Link Mill chains

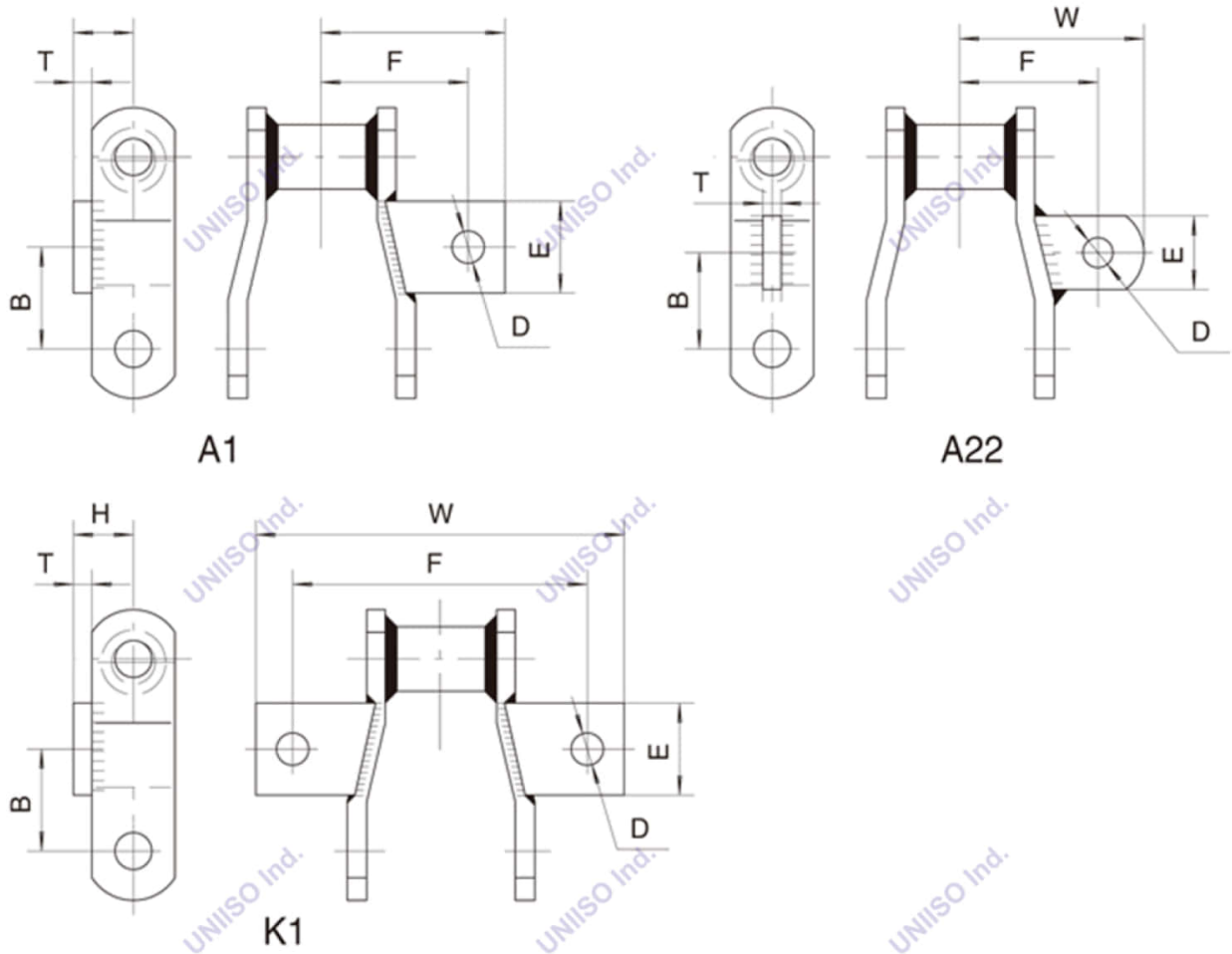


链号 Chain No.	节距 Pitch P mm	窄端 Narrow end		套筒外径 Bush diameter D(max) mm	链板 Sidebars		销轴 Pin			最小抗 拉强度 Ultimate tensile strength Fu (min) kN	许用工 作载荷 Rated working load kN	每米 重量 weight per meter q kg/m
		b ₁	b ₂		h	T	d	L ₁	L ₂			
		(min) mm	(max) mm		mm	mm	mm	mm	mm			
WHX124	101.6	38.1	71.5	36.55	38.1	9.5	19.05	51.8	56.2	320	32.7	12.5
WHX124HD	103.2	38.1	76.3	41.28	50.8	12.7	25.4	59.4	64.3	540	66.8	20.7
WHX111	120.9	50.8	85.6	36.55	38.1	9.5	19.05	58.7	64.5	320	39.5	12.5
WHX111HD	120.9	57.15	91.96	36.53	50.8	12.7	19.05	65.5	69.5	320	39.5	19.1
WHX132	153.67	69.85	111.6	44.5	50.8	12.7	25.4	77.3	81.7	540	66.8	20.4
WHX132HD	153.67	69.85	119.03	44.5	50.8	15.9	25.4	84	89.7	540	69.3	24.8
WHX106	152.4	38.1	71.5	36.55	38.1	9.5	19.05	51.8	56.2	320	32.7	9.7
WHX150	153.67	69.85	111.6	44.5	63.5	12.7	25.4	77.3	81.7	540	66.8	24.5
FWHX150	153.67	69.85	110	44.5	65	12	25	75	81	520	64.5	24.7
WHX155	153.67	69.85	112.1	44.5	63.5	14.3	28.4	77.4	87.5	660	77.8	27.7
WHX157	153.67	69.85	118.1	44.5	63.5	15.9	28.55	81.4	92.6	750	80.9	29.3
WHX159	155.58	73	118.1	50.8	76.2	15.9	31.5	83	84.8	930	90	38.4
WHX4855	304.8	69.85	116.9	44.5	63.5	15.9	31.55	81.8	84.3	780	76.8	22.5
WHX4859	304.8	73	118.1	50.8	76.2	15.9	31.5	83	84.8	930	87.5	28.9

所有零件经过热处理硬化，销轴表面感应硬化处理

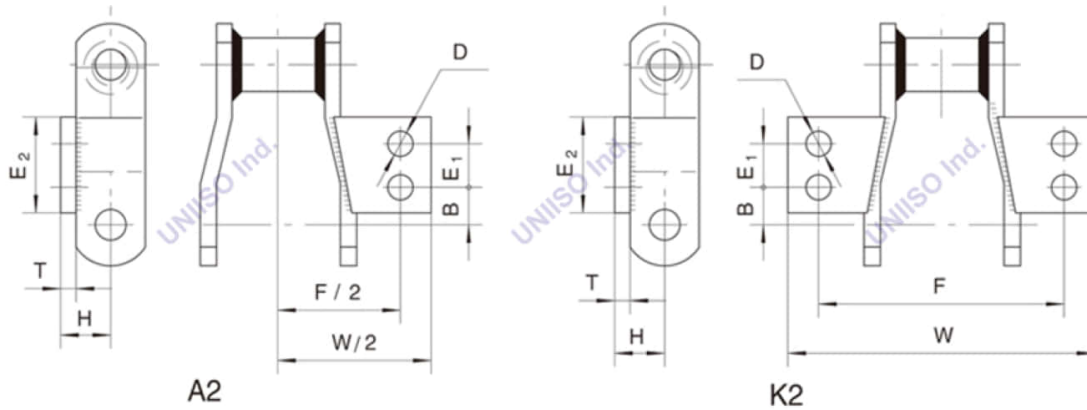
All components of chain have been hardened through heat treatment and pin has been surface induction hardened.

Attachments of Narrow Series Wekded Crank Link Mill chains

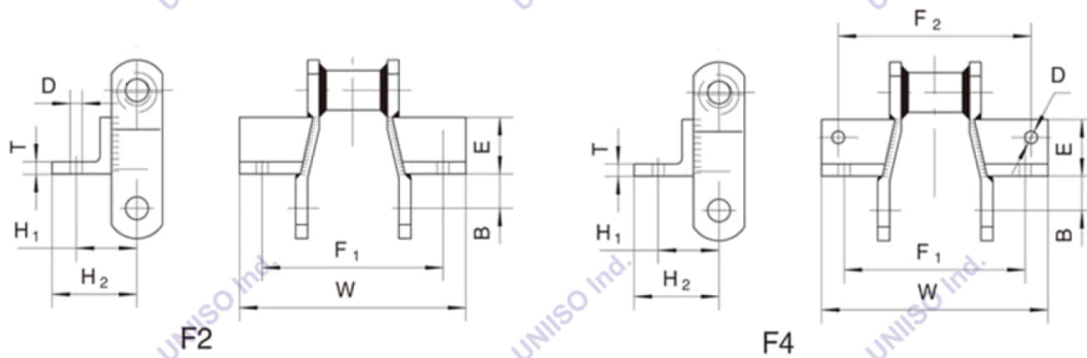


链号 Chain No.	B mm	D mm	E mm	F mm	H mm	W mm	T mm
A1							
WH78	31.75	10.4	31.75	50.8	20.7	63.5	6.4
WH82	38.1	10.4	44.45	53.1	22.3	69.85	6.4
A22							
WH78	33.3	10.4	25.4	47.8	/	63.5	9.5
WH124	50.8	11	38.1	75	/	95	9
K1							
WH78	31.75	10.4	31.75	101.6	20.7	127	6.4
WH82	38.1	10.4	44.45	106.2	22.3	139.7	6.4

Attachments of Narrow Series Wekded Crank Link Mill chains

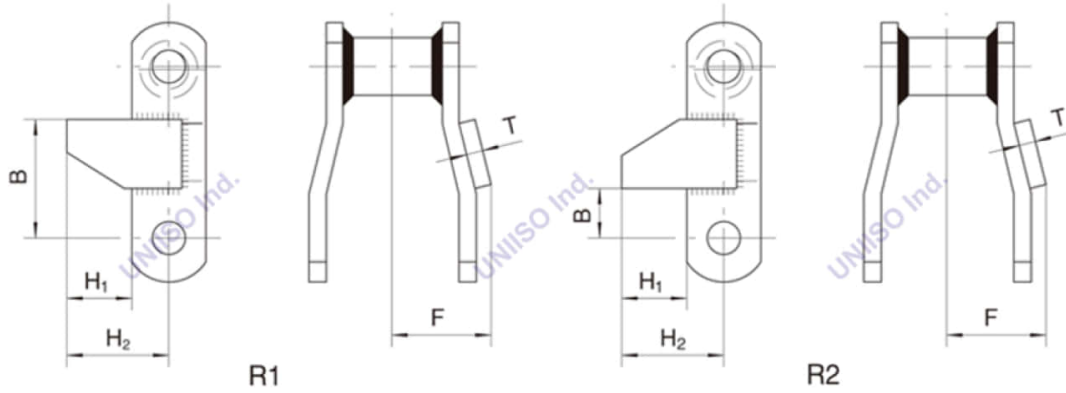


链号 Chain No.	B mm	D mm	E ₁ mm	E ₂ mm	F mm	H mm	W mm	T mm
A2, K2								
WH78	10.4	10.4	28.7	50.8	101.6	20.7	127	6.4
WH82	19.05	10.4	33.3	57.15	108.2	22.3	136.6	6.4
WHX124	22.4	10.4	49.3	76.2	133.6	28.6	162	9.5
WHX132	41.4	14.3	69.85	108	190.5	38.1	233.2	12.7
WHX150	41.4	14.3	69.85	106.5	190.5	44.45	233.2	12.7
WHX155	41.4	14.3	69.85	106.5	190.5	46	233.2	14.3
WHX157	44.45	14.3	63.5	101.6	203.2	47.75	242.8	16

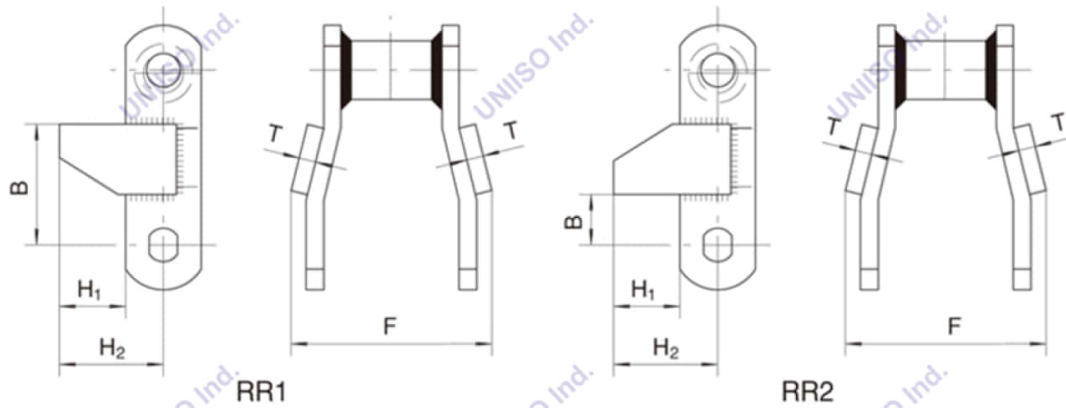


链号 Chain No.	B mm	D mm	E mm	F ₁ mm	F ₂ mm	H ₁ mm	H ₂ mm	T mm	W mm
F2									
WH78	14.23	10.4	31.75	95.25	/	36.58	58.67	6.4	119
F4									
WH78	17.53	10.4	31.75	95.25	114.3	44.45	58.67	6.4	139.7
WH82	20.57	10.4	28.7	104.9	127	45.97	60.45	6.4	150.9
WHX124	22.35	10.4	36.07	111.25	133.35	52.32	77.72	9.5	157.2

Attachments of Narrow Series Wekded Crank Link Mill chains

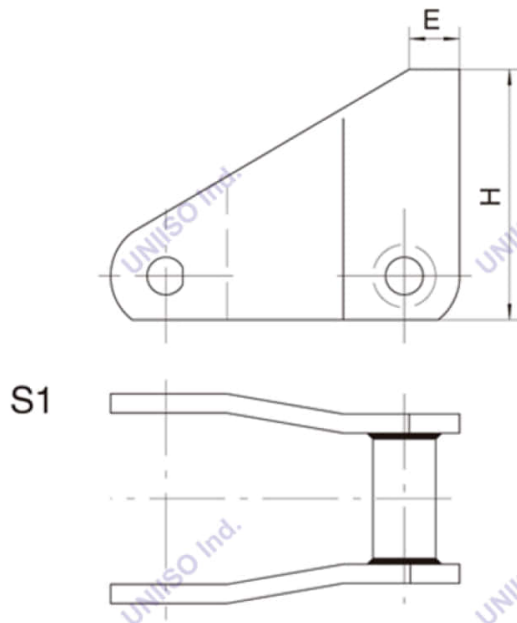


链号 Chain No.	B mm	F mm	H ₁ mm	H ₂ mm	T mm
R1					
WH78	47.75	38.1	25.4	39.7	6.4
WH82	55.4	41.4	31.85	47.75	6.4
WHX124	69.1	54.9	28.7	47.75	9.5
R2					
WH78	17.5	38.1	25.4	39.7	6.4
WH82	22.4	41.4	31.85	47.75	6.4
WHX124	31.75	54.9	28.7	47.75	9.5



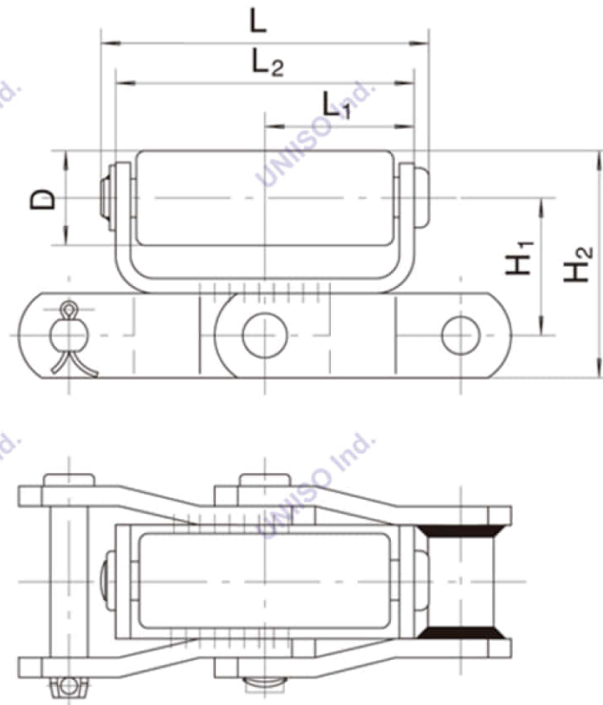
链号 Chain No.	B mm	F mm	H ₁ mm	H ₂ mm	T mm
RR1					
WH78	47.75	76.2	25.4	39.7	6.4
WH82	55.4	82.8	31.85	47.75	6.4
WHX124	69.1	109.8	28.7	47.75	9.5
RR2					
WH78	17.5	76.2	25.4	39.7	6.4
WH82	22.4	82.8	31.85	47.75	6.4
WHX124	31.75	109.8	28.7	47.75	9.5

Attachments of Narrow Series Waked Crank Link Mill chains



链号 Chain No.	E mm	H mm
S1		
WH111	25.4	127
WH132	25.4	152.4
WHX157	33.35	127

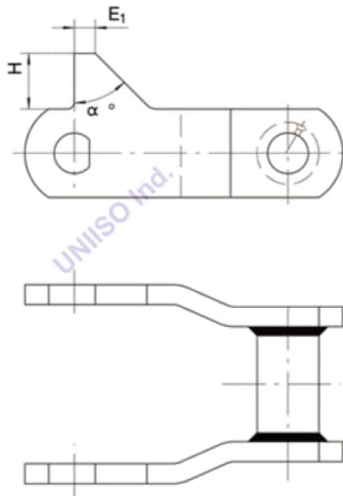
F20



链号 Chain No.	D mm	H ₁ mm	H ₂ mm	L mm	L ₁ mm	L ₂ mm
F20						
DWR78	32	46.6	78.5	121	55.5	111

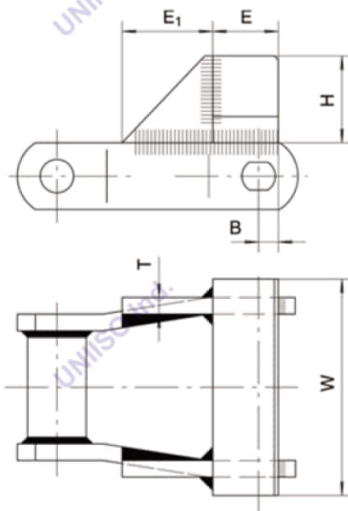
Attachments of Narrow Series Welded Crank Link Mill chains

RR2



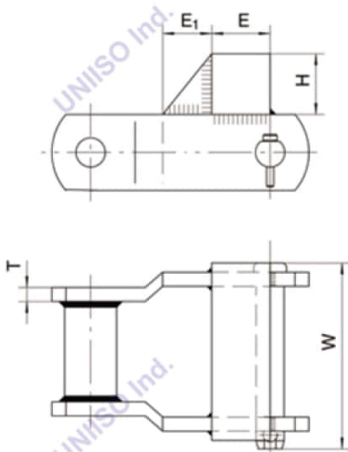
链号 Chain No.	E ₁ mm	H mm	α mm
RR2			
WHX155	15	40	45
WH150	8	25.5	45

RFA



链号 Chain No.	B mm	E mm	E ₁ mm	H mm	T mm	W mm
RFA						
WH132	15	50	69	66.2	12	165
WHX155	18	50	42	52	12	152

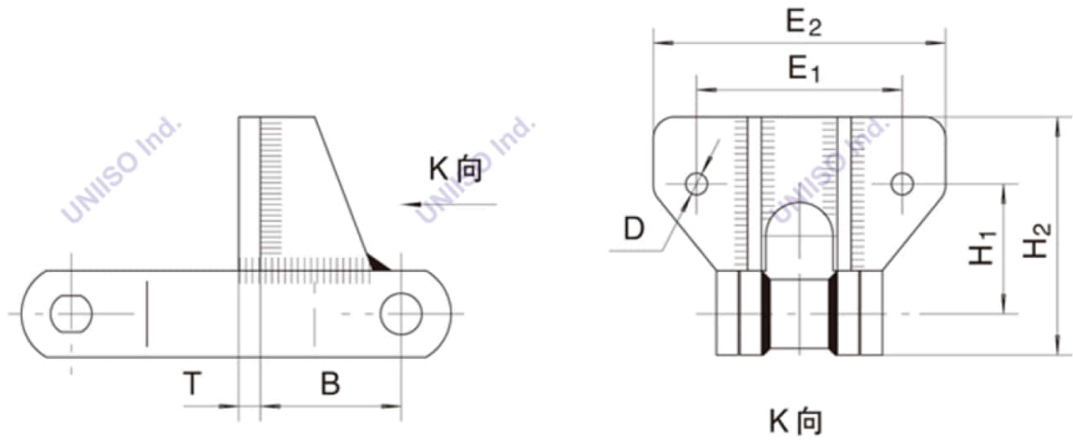
RFB



链号 Chain No.	E mm	E ₁ mm	H mm	T mm	W mm
RFB					
FWHX150	50	42	52	12	152
WH124	40	30	40	6	90

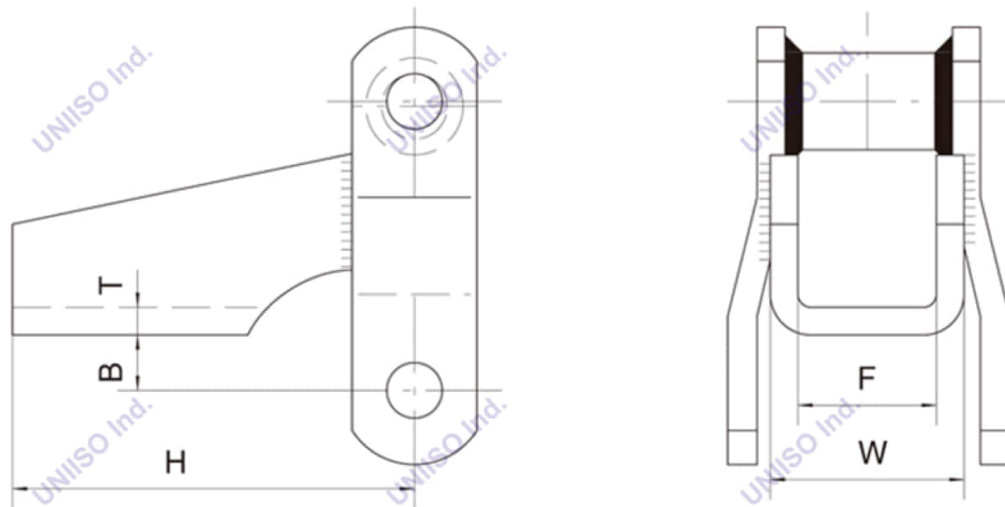
Attachments of Narrow Series Wekded Crank Link Mill chains

F226



链号 Chain No.	H ₁ mm	H ₂ mm	E ₁ mm	E ₂ mm	D mm	B mm	T mm
F226							
WH720S	60	110	95	135	10	66	10

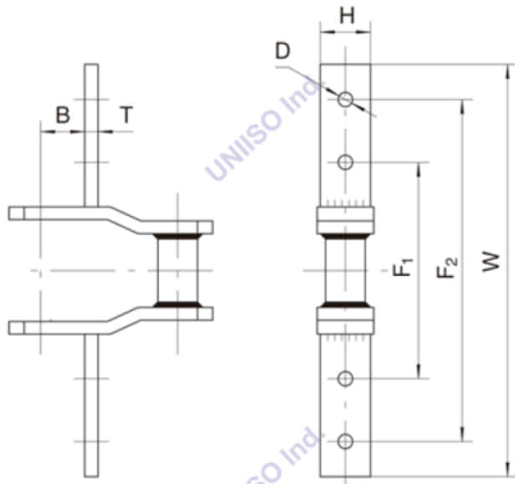
H1



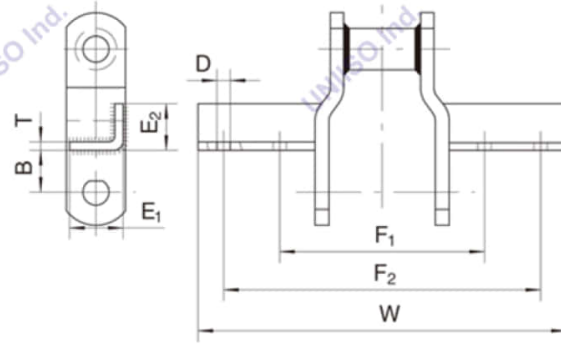
链号 Chain No.	B mm	F mm	H mm	T mm	W mm
H ₁					
WH78	12.7	31.7	92.2	6.4	44.5
WH82	16	38	92.2	6.4	50.8

Attachments of Narrow Series Waked Crank Link Mill chains

BH2附件 BH2 Attachment



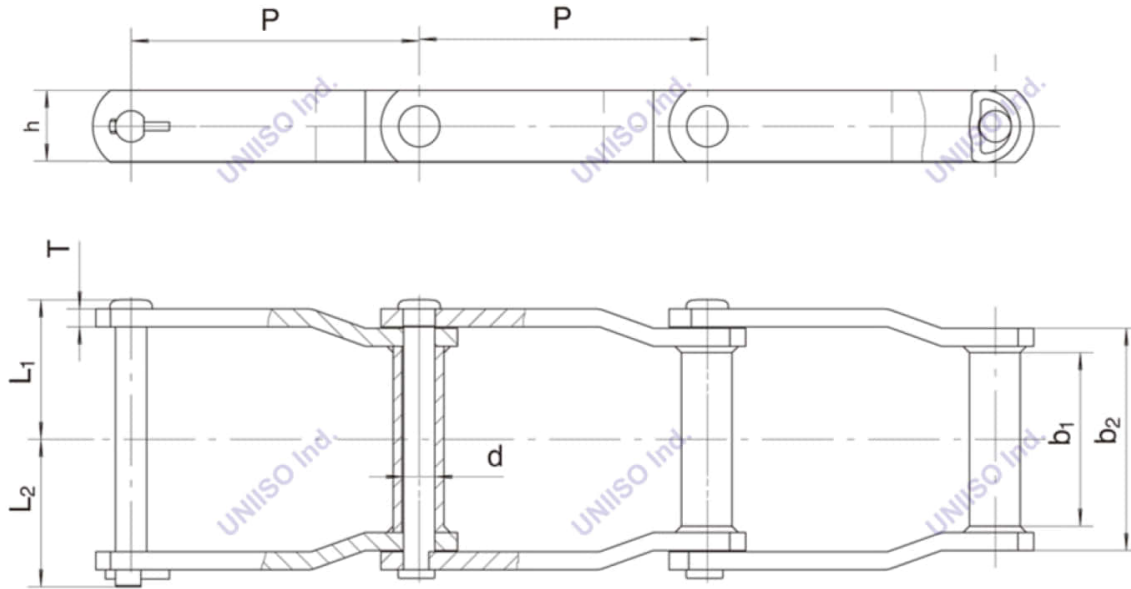
BF2附件 BF2 Attachment



链号 Chain No.	H mm	F ₁ mm	F ₂ mm	W mm	D mm	B mm	T mm
BH2							
WH78	28	120	200	230	9	15	8
WH82	31.8	130	180	220	10	17	6
WH124	38.1	145	315	376	11	46	9.5
	38.1	170	347	387	12	31.8	10
WH111	44.5	206.8	336.8	386.8	13	20	12
	44.5	206.8	426.8	506.8	18	20	14
WH132	50.8	219.4	370	450	14	77.3	12.7
	50.8	200	619.1	665	14.3	50.8	14
WHX155	50	203.1	593.1	660	13	50	12
WHX157	63.5	270	450	530	18	32	16
	63.5	310	570	700	18	32	16

链号 Chain No.	E ₁ mm	E ₂ mm	F ₁ mm	F ₂ mm	W mm	D mm	B mm	T mm
BF2								
WH124	38.1	38.1	154.3	322.3	376.3	12	31.8	6
	38.1	38.1	154.3	627.3	681.3	12	31.8	6
WH111	45	45	206.8	606.8	706.8	13	86	6
WH132	50	50	218	458.7	538.7	14	50	6
	75	50	221	736	816	16	40	8
WH150	50	50	240	520	590	13	73.67	5
	50.8	50.8	200	590	652.5	14.3	50.8	6
WHX155	50	75	260	720	790	13	73.67	6
WHX157	63.5	63.5	220	395	455	14.3	45	10
	63	63	280	760	890	18	106	8

Wide Series Wekded Crank Link Mill chains

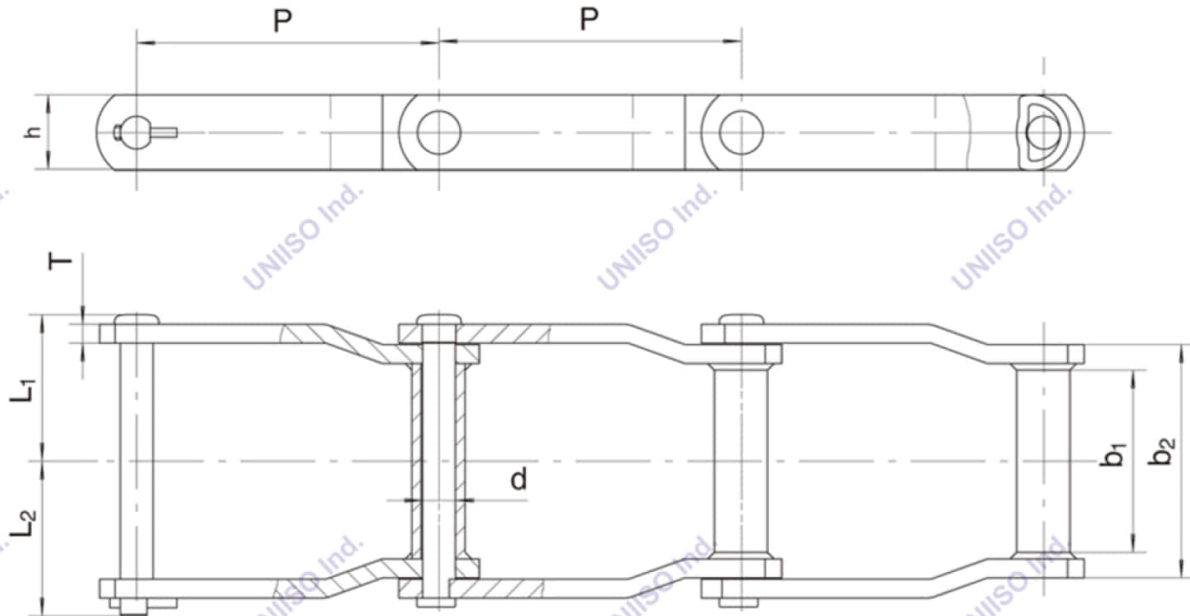


链号 Chain No.	节距 Pitch	窄端 Narrow end		链板 Sidebars		销轴 Pin			最小抗拉 强度 Ultimate tensile strength	许用工作 载荷 Rated working load	每米 重量 Weight per meter
	P mm	b ₁ (min) mm	b ₂ max) mm	h mm	T mm	d mm	L ₁ mm	L ₂ mm	Fu(min) kN	kN	q kg/m
WDR104	152.4	104.6	136.9	38.1	9.5	19.05	84.2	91	204	28.5	12
WDR110	152.4	228.6	263.9	38.1	9.5	19.05	147.8	154.5	204	28.5	17
WDR120	152.4	222.2	260.4	50.8	12.7	22.23	150.5	157	390	48	28.7
WDR112	203.2	228.6	263.9	38.1	9.5	19.05	147.8	154.5	204	28.5	14.1
WDR116	203.2	325.8	358.7	44.5	9.5	19.05	195.4	201.8	262	36.5	18.8
WDR118	203.2	334	378.45	50.8	12.7	22.23	210.7	217.2	390	48	32.1
WDR480	203.2	282.4	324.1	50.8	12.7	22.23	182.2	188.7	390	48	26.9
WDR2210	155.85	228.6	263.9	38.1	9.5	19.05	147.8	154.5	204	28.5	16.7
WDR2380	207.29	282.4	324.1	50.8	12.7	22.23	182.2	188.7	390	48	26.6

链条销轴经过热处理硬化

All pins of chain have been hardened through heat treatment.

Wide Series Wekded Crank Link Mill chains

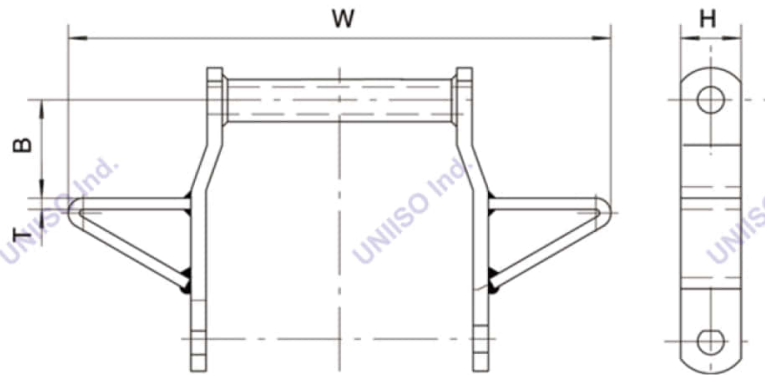


链号 Chain No.	节距 Pitch P mm	窄端 Narrow end		链板 Sidebars		销轴 Pin			最小抗拉 强度 Ultimate tensile strength Fu(min) kN	许用工 作载荷 Rated working load kN	每米 重量 Weight per meter q kg/m
		b ₁ (min) mm	b ₂ (max) mm	h mm	T mm	d mm	L ₁ mm	L ₂ mm			
WDH104	152.4	104.6	136.9	38.1	9.5	19.05	84.2	91	310	44.5	12
WDH110	152.4	228.6	263.9	38.1	9.5	19.05	147.8	154.5	310	44.5	16.9
WDH120	152.4	222.2	260.4	50.8	12.7	22.23	150.5	157	500	66.8	28.7
WDH112	203.2	228.6	263.9	38.1	9.5	19.05	147.8	154.5	310	44.5	14.1
WDH116	203.2	325.8	358.7	44.5	9.5	19.05	195.4	201.8	320	51.2	18.8
WDH118	203.2	334	378.45	50.8	12.7	22.23	210.7	217.2	500	66.8	32.1
WDH480	203.2	282.4	324.1	50.8	12.7	22.23	182.2	188.7	500	66.8	26.9
WDH580	203.2	282.4	324.1	50.8	12.7	25.4	181.5	189.3	540	91.2	29.2
WDH680	203.2	282.4	330.2	50.8	16	25.4	190.7	198.5	540	91.2	32.5
WDH2210	155.85	228.6	263.9	38.1	9.5	19.05	147.8	154.5	310	44.5	16.70
WDH2380	207.29	282.4	324.1	50.8	12.7	22.23	182.2	188.7	500	66.8	26.6

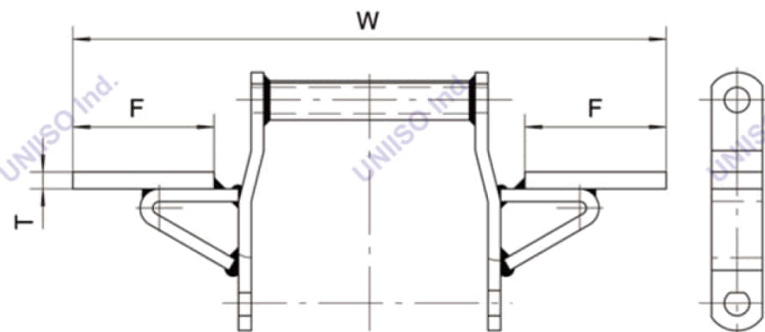
链条销轴经过热处理硬化

All pins of chain have been hardened through heat treatment.

Attachment of Wide Series Wekded Crank Link Mill chains

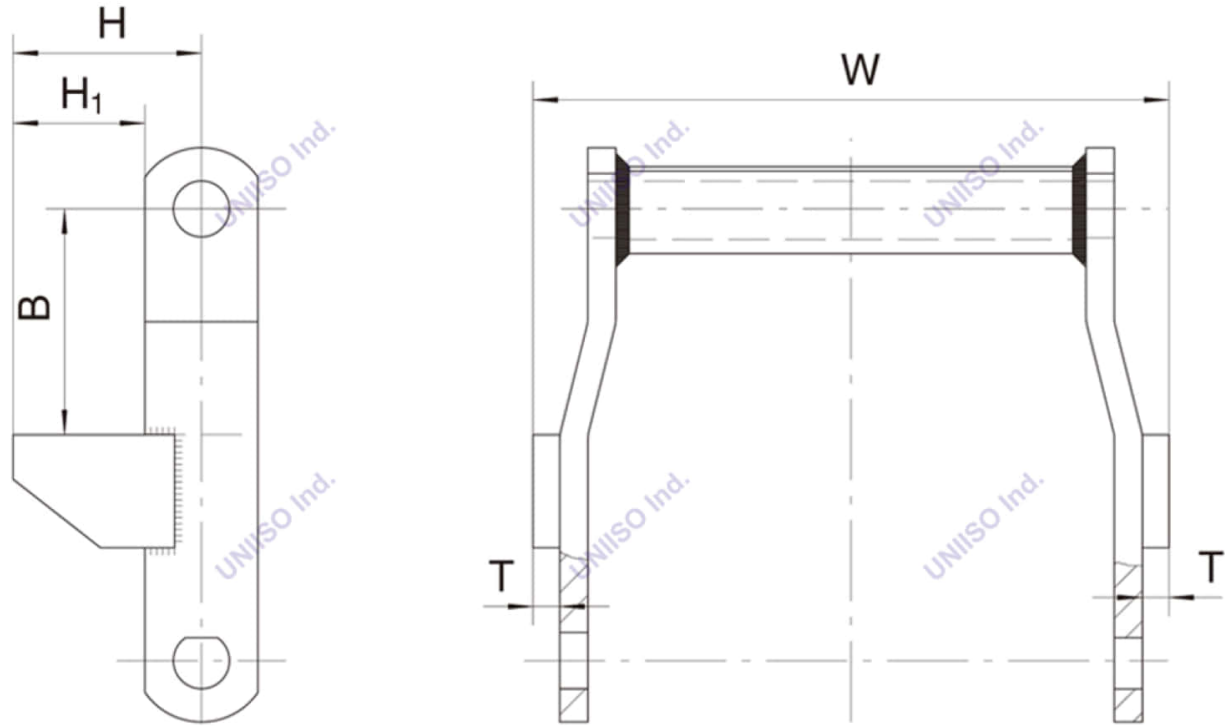


链号 Chain No.	B mm	H mm	T mm	W mm
WING				
WDH110	44.45	38.1	9.5	431.8
WDR110	44.45	38.1	9.5	431.8
WDH112	82.6	38.1	9.5	431.8
WDR112	82.6	38.1	9.5	431.8
WDH2210	57.2	38.1	9.5	431.8
WDR2210	57.2	38.1	9.5	431.8
WDH120	82.6	50.8	12.7	431.8
WDR120	82.6	50.8	12.7	431.8
WDH2380	82.6	50.8	9.5	558.8
WDR2380	82.6	50.8	9.5	558.8
WDH480	63.5	50.8	12.7	558.8
WDR480	63.5	50.8	12.7	558.8



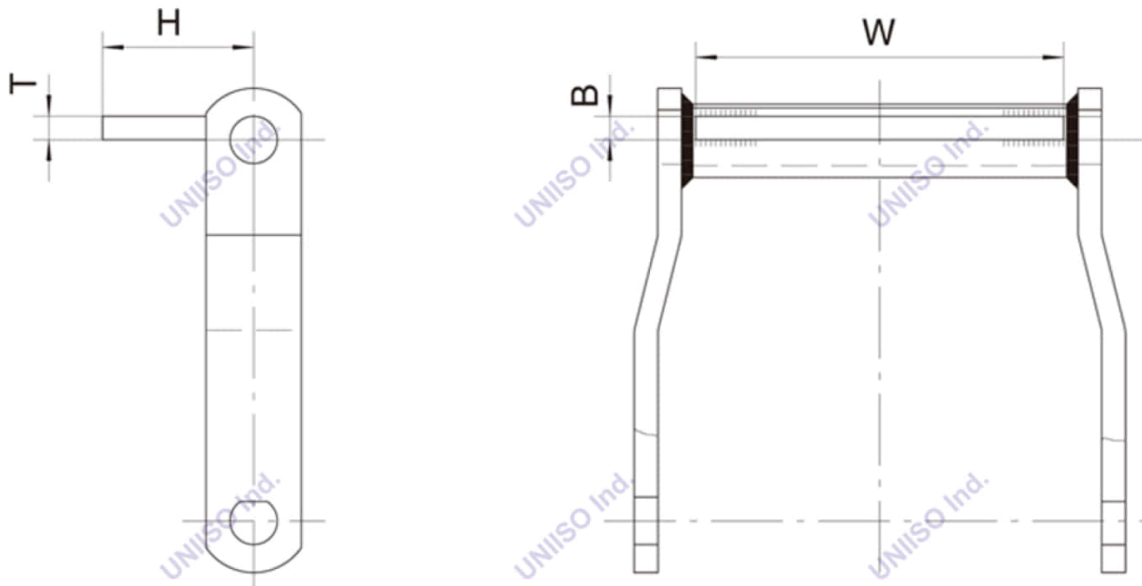
链号 Chain No.	F mm	T mm	W mm
W24			
WDH110	152.4	12.7	609.6
WDR110	152.4	12.7	609.6

Attachment of Wide Series Wekded Crank Link Mill chains



链号 Chain No.	B mm	H ₁ mm	H mm	T mm	W mm
RR					
WDH110	76.2	44.45	63.5	9.5	302.7
WDR110	76.2	44.45	63.5	9.5	302.7
WDH112	76.2	44.45	63.5	9.5	302.7
WDR112	76.2	44.45	63.5	9.5	302.7
WDH2210	76.2	44.45	63.5	9.5	302.7
WDR2210	76.2	44.45	63.5	9.5	302.7
WDH120	76.2	57.15	82.55	12.7	313.4
WDR120	76.2	57.15	82.55	12.7	313.4
WDH480	76.2	57.15	82.55	12.7	377
WDR480	76.2	57.15	82.55	12.7	377
WDH2380	76.2	57.15	82.55	12.7	377
WDR2380	76.2	57.15	82.55	12.7	377

Attachment of Wide Series Wekded Crank Link Mill chains

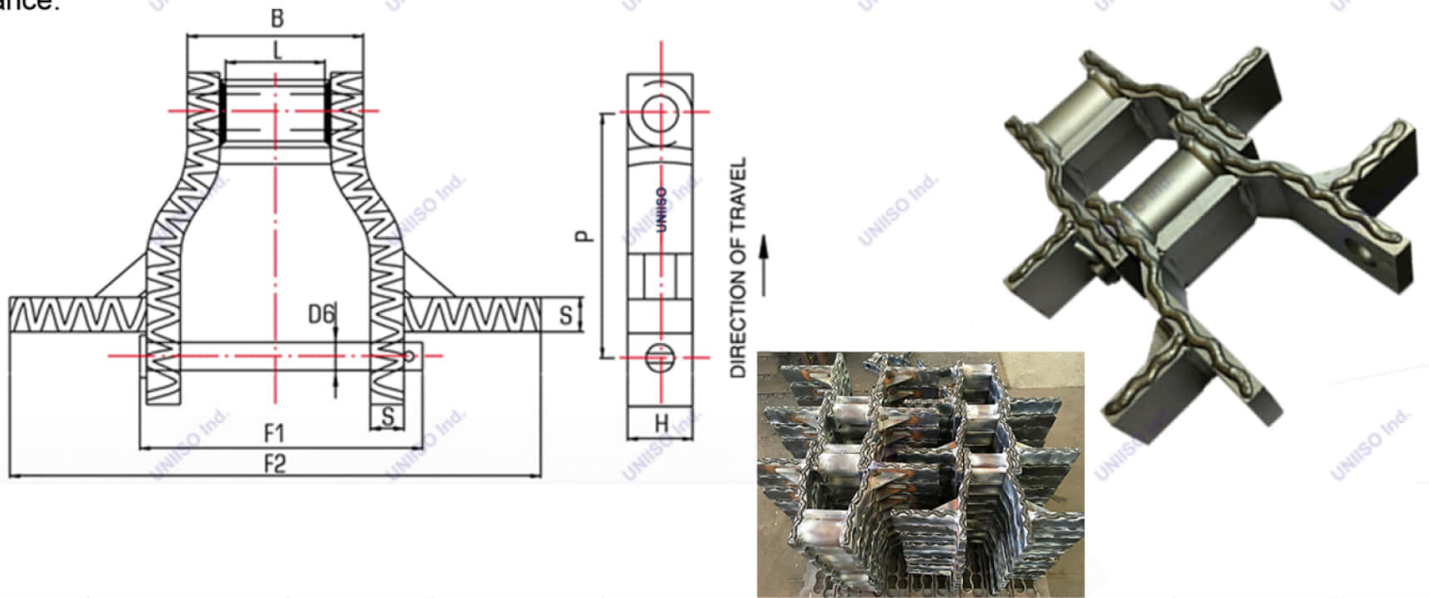


C1、C3、C4

链号 Chain No.	B mm	H mm	T mm	W mm
C1				
WDH110	9.5	60.5	9.5	231.9
WDR110	9.5	60.5	9.5	231.9
WDH112	9.5	60.5	9.5	231.9
WDR112	9.5	60.5	9.5	231.9
C3				
WDH120	12.7	76.2	12.7	219.2
WDR120	12.7	76.2	12.7	219.2
WDH480	12.7	76.2	12.7	282.7
WDR480	12.7	76.2	12.7	282.7
C4				
WDH110	9.5	95.25	9.5	231.9
WDR110	9.5	95.25	9.5	231.9
WDH112	9.5	95.25	9.5	231.9
WDR112	9.5	95.25	9.5	231.9
WDH480	12.7	127	12.7	282.7
WDR480	12.7	127	12.7	282.7

WHX Series Heavy Duty Drag Chain

UNIISO drag chain features include press fit construction and induction hardened pins. Induction hardened pins combine the benefit of a thru-hardened part for maximum strength with a high surface hardness to resist abrasive wear. This also allows for a ductile pin which will flex under shock load. All of our heavy duty drag chains are heat treated for maximum wear life. Our standard manufacturing processes include pre-heat and post-heat cycles before and after all welding operations. All of our WHX drag chains include hard face welding on all sliding surfaces for wear resistance.



Chain No.	Pitch mm	Min. Breaking Load (kN)	Average Weight (Kg/Mtr)	Over-All Pin&Cotter/ F1 mm	Width Over-All /F2/mm	Between Sidebars /L/mm	Thickness mm	Height mm	Rivets Diameter /mm	Bearing Length mm
WHX5157	153.67	630.00	83.00	176.28	203.20 to 356.0	69.85	16.00	63.50	28.70	117.60
WHX6067	228.60	800.00	99.80	208.03	254.0 to 660.40	92.20	19.05	63.50	31.75	139.70
WHX5121	228.60	980.00	132.78	247.65	254.0 to 762.0	92.20	28.70	63.50	31.75	160.27
WHX6121	228.60	980.00	132.78	247.65	254.0 to 762.0	92.20	28.70	63.50	31.75	160.27

Weld Integrity

UNIISO understands that the integrity of our welding is critical to the success of your operation. Proper welding produces welds that are free of cracks, slag, inclusions, undercutting, and overlap. We do it right the first time by offering pre-and post-heat treatment on all sidebars prior to welding. Our welds are tested to ensure proper weld penetration to provide maximum durability.

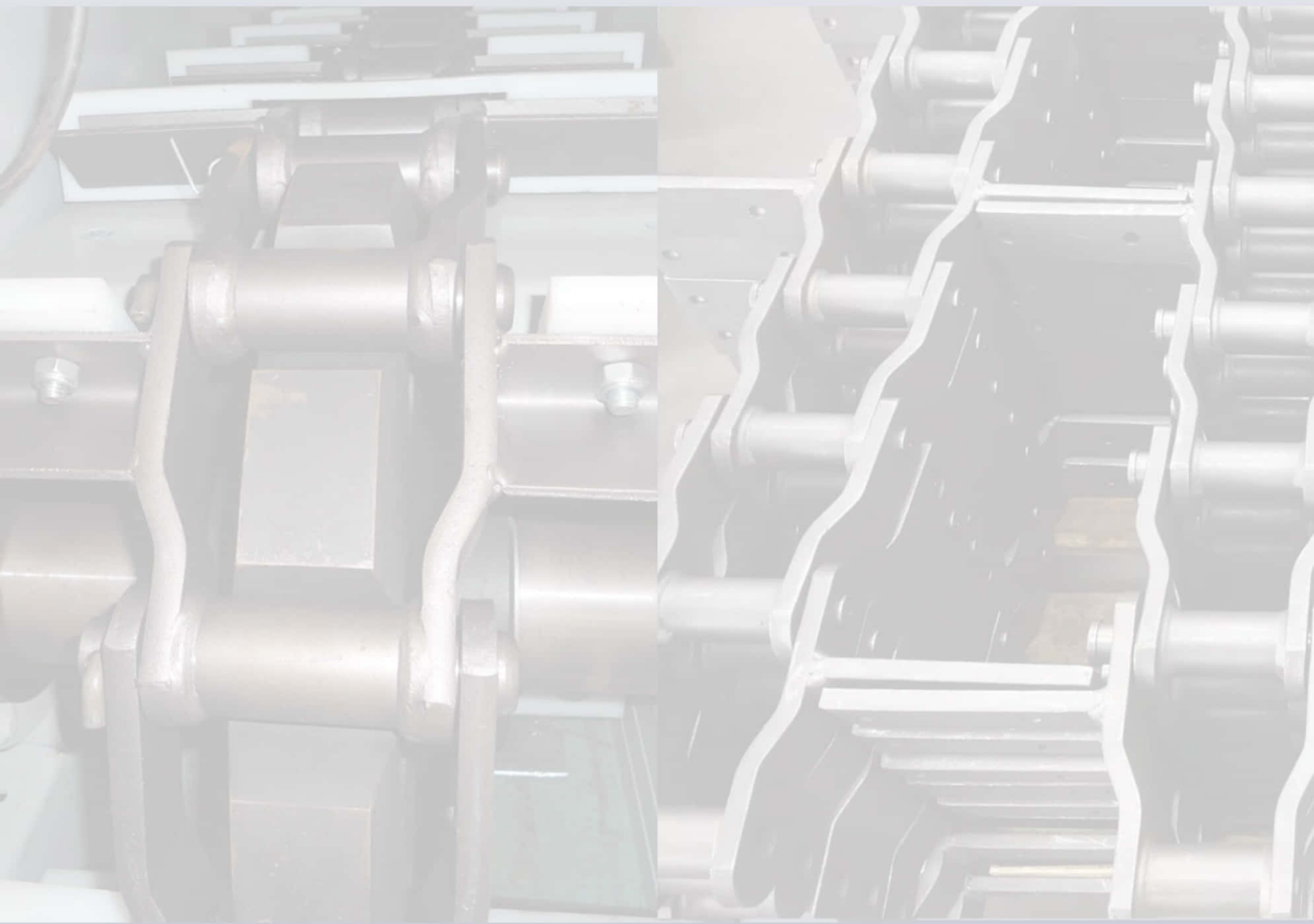


Engineering Class Chains and Sprockets

Engineering Class Chains and Sprockets must work together, so buying them from the same source makes sense. When chains and sprockets articulate correctly, you get longer service life from your chain. That means long-term savings and real value for your operation. Maximize your operation with Engineering Class Chains and Sprockets from UNIISO.



UNIISOTM
POWER TO THE WORLD



Shanghai UNIISO Industries Co.,Ltd.

Add: No.5699, Hangnan Rd. Fengpu Industrial Park

Fengxian Dist. Shanghai City, P.R.China.

Tel:+8617317253554

Email: sales@uniisoindustries.com

www.uniisoindustries.com

